

# EDOP/SZW SCHWERIN-PARCHIM

NDB CHART NO.1  
Revision 13 FEB 09  
Effective 10 APR 08

# NDB RWY 24 **NDB** SCHWERIN, GERMANY

**BREMEN RADAR 126.170**  
**BREMEN RADAR 123.220**

**TOWER: 128.900**

Trans alt: 5000'  
Trans level: By ATC

MSA 25 NM from  
PI NDB

NDB  
PI  
**333.0**

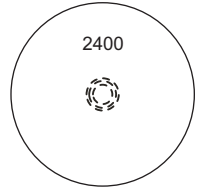
Final  
Apch Crs  
**244°**

NDB DA(H)  
Refer to Minimums

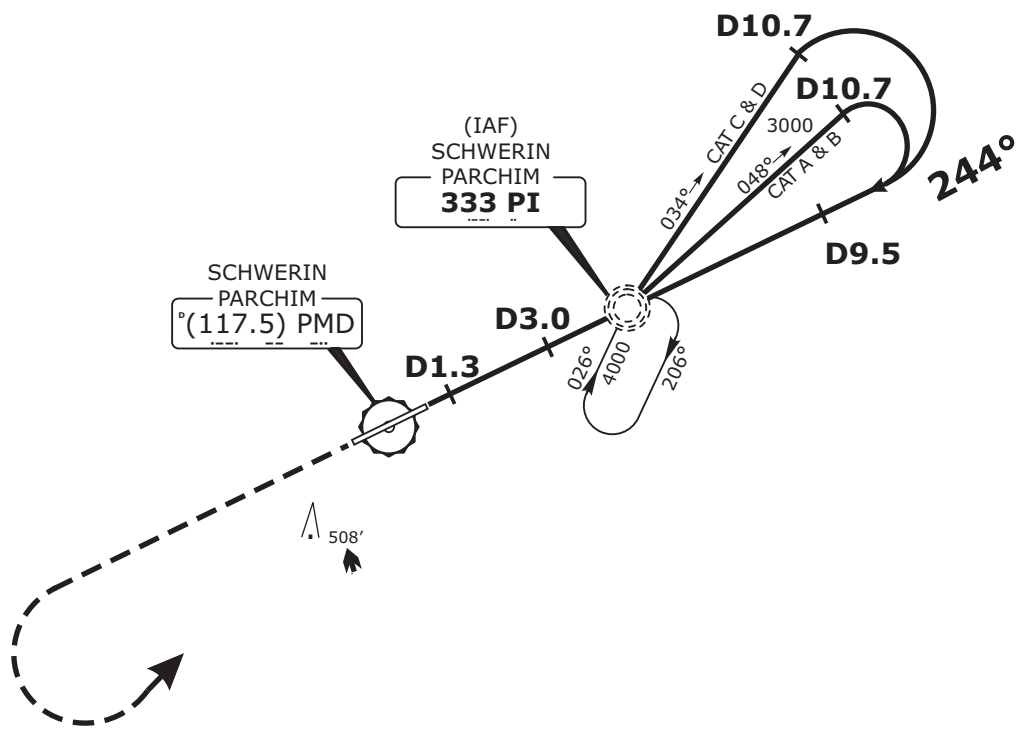
Apt Elev 166'  
RWY 166'

2400

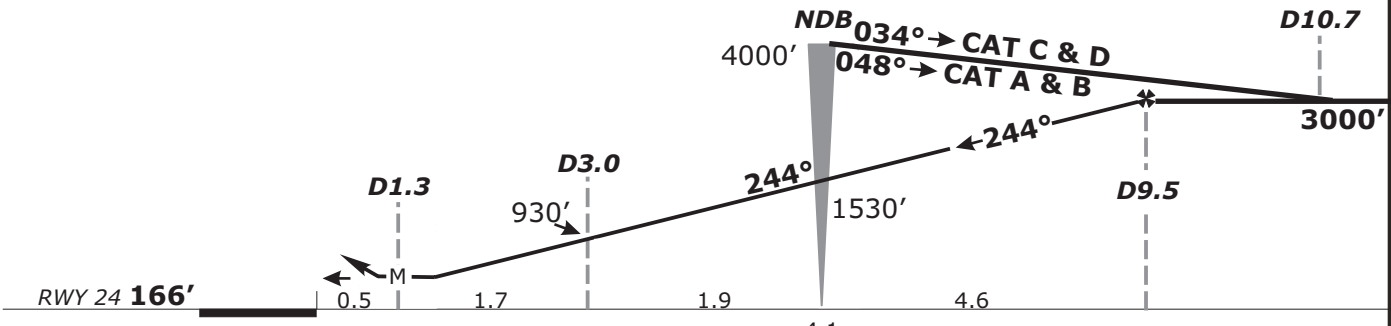
**MISSED APCH:** Climb straight ahead until passing 2000', left turn to PI NDB climbing to 4000'.



DME REQUIRED



PMD DME	3.0	4.0	5.0	6.0	7.0	8.0	9.0
ALTITUDE	930'	1240'	1560'	1880'	2200'	2520'	2840'



<b>Gnd speed-Kts</b>	70	90	100	120	140	160	HIALS PAPI	<b>2000'</b>
<b>LOC Descent Gradient 5.2%</b>	369	474	527	632	737	843		
<b>MAP at D1.3</b>								

<b>FS-OPS</b>		<b>STRAIGHT-IN LANDING RWY 24</b>	
		MDA(H) <b>630'</b> (464')	
		ALS out	
A	RVR 1000m		
B	RVR 1200m	RVR 1500m	
C	RVR 1600m		
D	RVR 1600m	RVR 2000m	

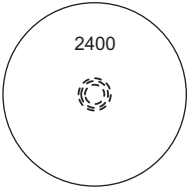
Valid for flight simulation use only - do not use for real life navigation

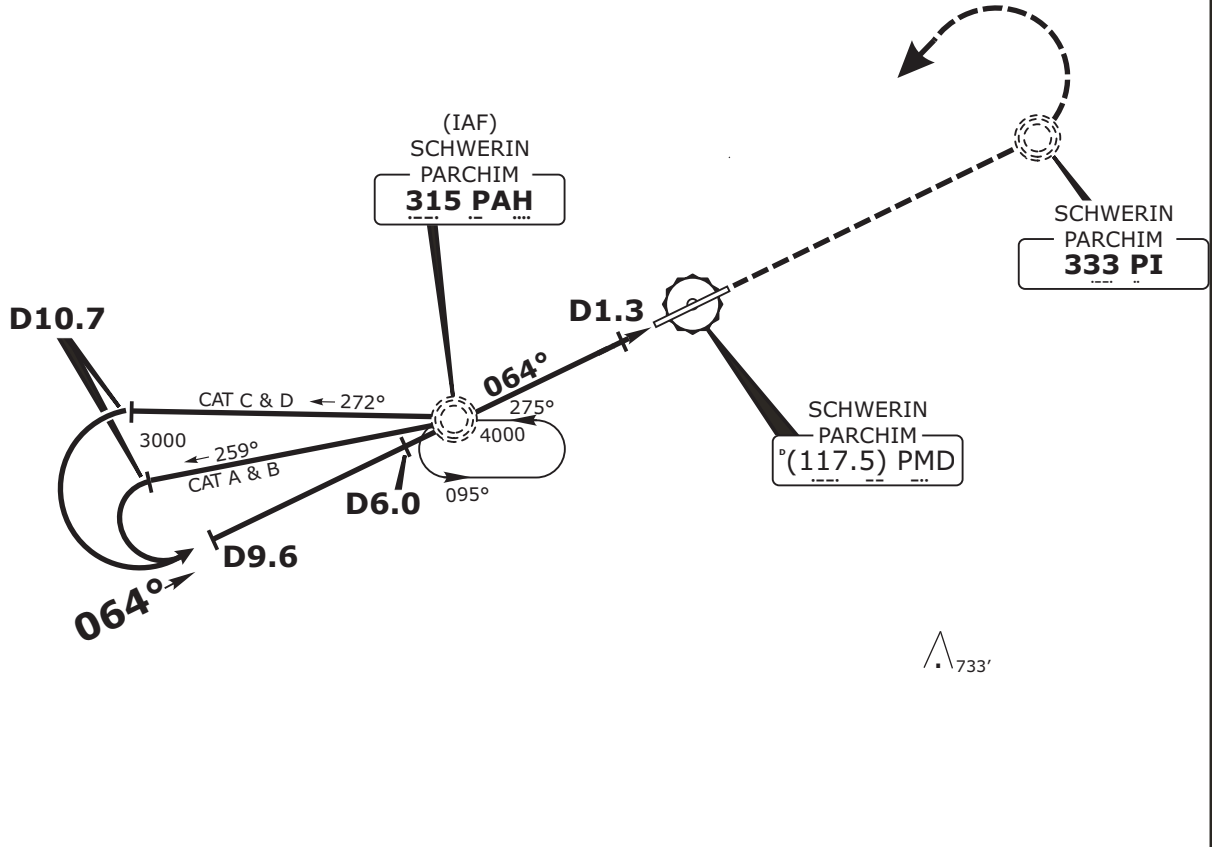
CHANGES: Frequency

**EDOP/SZW**  
SCHWERIN-PARCHIM

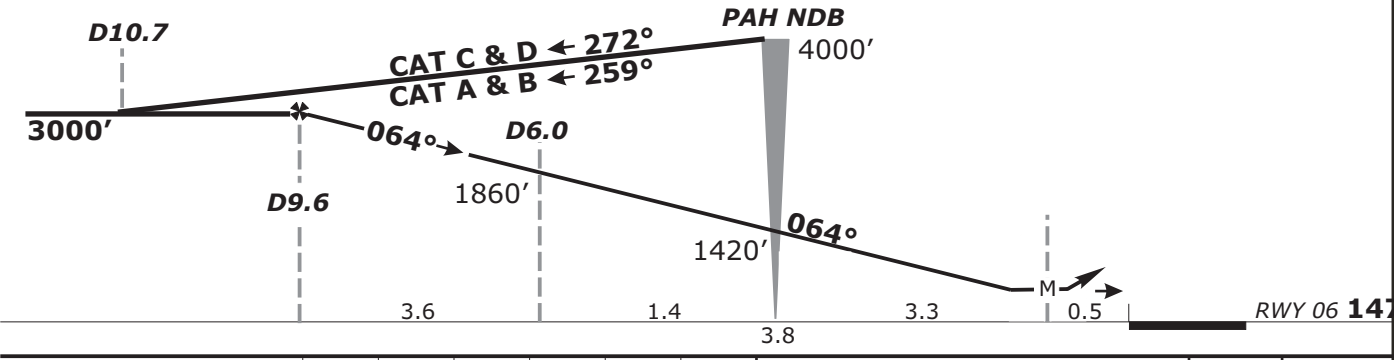
NDB CHART NO.2  
Revision 13 FEB 09  
Effective 10 APR 08

**NDB RWY 06** **NDB**  
**SCHWERIN, GERMANY**

<b>BREMEN RADAR</b> 126.170	<b>TOWER: 128.900</b>	Trans alt: 5000' Trans level: By ATC	MSA 25 NM from PI NDB 
<b>BREMEN RADAR</b> 123.220			
<i>NDB</i> PAH <b>315.0</b>	<i>Final</i> <i>Apch Crs</i> <b>064°</b>	<i>NDB DA(H)</i> <i>Refer to Minimums</i>	<i>Apt Elev 166'</i> <i>RWY 147'</i>
<b>MISSED APCH:</b> Climb straight ahead to PI NDB, left turn to PAH NDB climbing to 4000'.			



PMD DME	9.0	8.0	7.0	6.0	5.0	4.0	3.0
ALTITUDE	2810'	2490'	2180'	1860'	1540'	1220'	900'



<b>Gnd speed-Kts</b>	<b>70</b>	<b>90</b>	<b>100</b>	<b>120</b>	<b>140</b>	<b>160</b>	HIALS <input checked="" type="checkbox"/> REIL PAPI —	PI <b>333</b> ↑
<b>LOC Descent Gradient 5.2%</b>	<b>369</b>	<b>474</b>	<b>527</b>	<b>632</b>	<b>737</b>	<b>843</b>		
<b>MAP at D1.3</b>								

<b>FS-OPS</b>		<b>STRAIGHT-IN LANDING RWY 06</b>	
		MDA(H) <b>620'</b> (473')	
		ALS out	
<b>A</b>	RVR 1400m		
<b>B</b>	RVR 1500m		
<b>C</b>	RVR 1600m		
<b>D</b>	RVR 1800m	RVR 2000m	

Valid for flight simulation use only - do not use for real life navigation

CHANGES: Frequency