

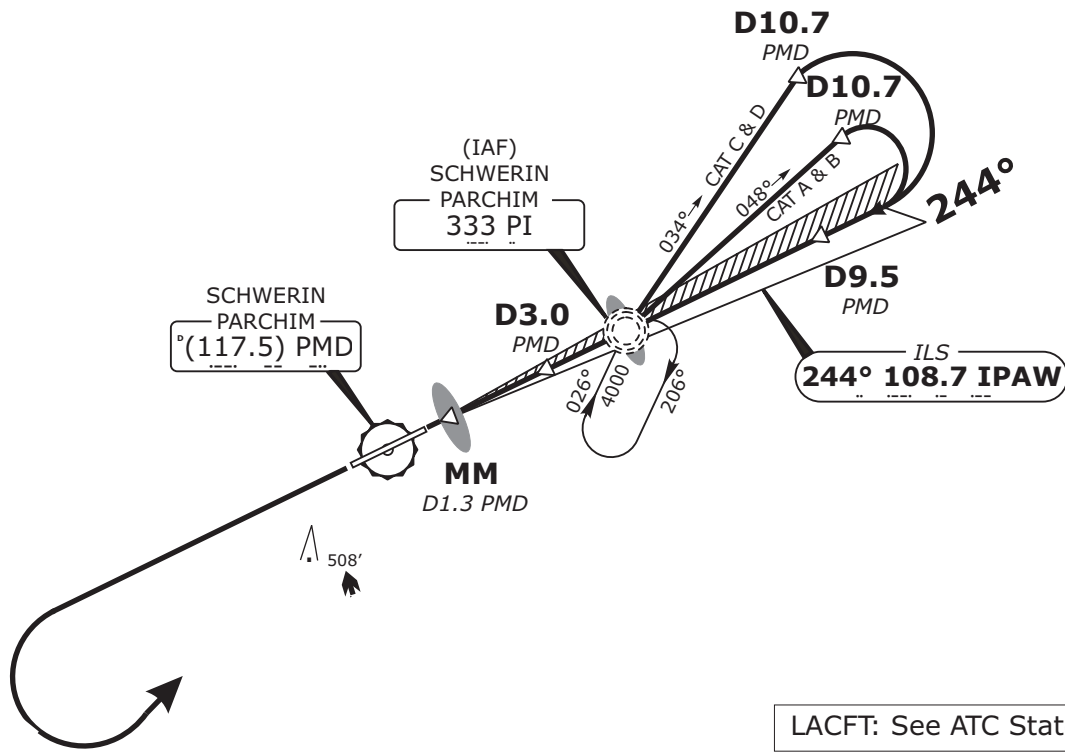
# EDOP/SZW SCHWERIN-PARCHIM

ILS CHART NO.1  
Revision 10 APR 08  
Effective 10 APR 08

# ILS RWY 24 ILS SCHWERIN, GERMANY

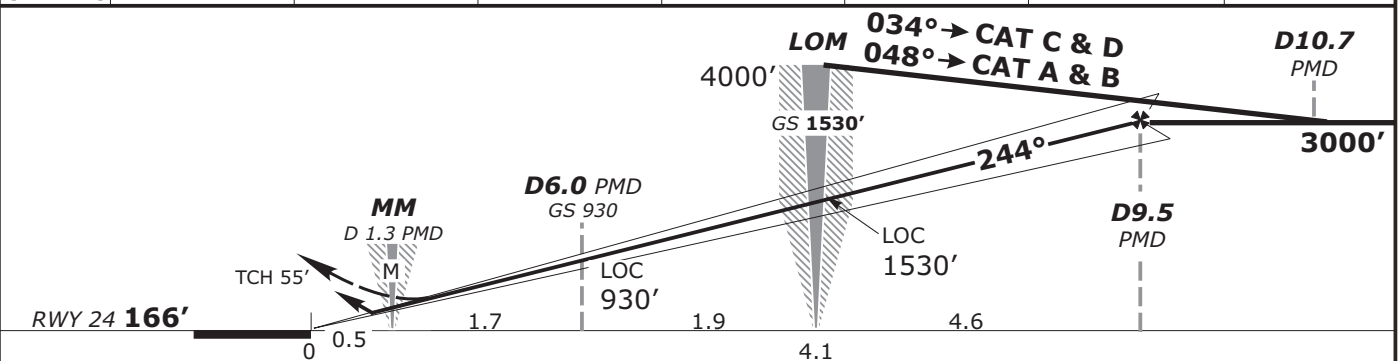
<b>BREMEN RADAR</b> 126.170 <b>BREMEN RADAR</b> 123.220	<b>TOWER: 128.900</b>	Trans alt: 5000' Trans level: By ATC	MSA 25 NM from PI NDB  2400
LOC IPAW <b>108.70</b>	Final Apch Crs <b>244°</b>	GS <b>OM</b> <b>1530'</b> (1464')	ILS DA(H) Refer to Minimums Apt Elev 166' RWY 166'
<b>MISSED APCH:</b> Climb straight ahead until passing 2000', left turn to PI NDB climbing to 4000'.			

**LOC: DME REQUIRED**



LACFT: See ATC State pages

<b>LOC (GS out)</b>	PMD DME	4.0	5.0	6.0	7.0	8.0	9.0
	ALTITUDE	1240'	1560'	1880'	2200'	2520'	2840'



<b>Gnd speed-Kts</b>	70	90	100	120	140	160	HIALS	2000'
<b>ILS GS 3.00° or LOC Descent Gradient 5.2%</b>	377	485	539	647	755	862	PAPI	
<b>MAP at MM/D1.3 PMD</b>								

<b>FS-OPS ILS 1 STRAIGHT-IN LANDING RWY 24</b>		<b>LOC (GS out)</b>	
DA(H) A: <b>378'</b> (212') C: <b>398'</b> (232') B: <b>388'</b> (222') D: <b>408'</b> (242')		MDA(H) <b>560'</b> (394')	
FULL		ALS out	
A		RVR 900m	RVR 1500m
B	RVR 600m	RVR 1000m	RVR 1800m
C		RVR 1400m	RVR 2000m
D			

**1** LACFT: DA(H) 408'(242').

Valid for flight simulation use only - do not use for real life navigation

CHANGES: Frequency