

Valid for flight simulation use only - do not use for real life navigation

EDDT/TXL TEGEL

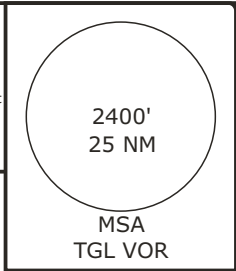
TRANS CHART NO.1
Revision 02. MAY 08
Effective 21 DEC 06

BERLIN, GERMANY

Radar: Bremen Radar 123.220
Arrival: Bremen Radar 119.700
Bremen Radar 126.420
Director: Berlin Director 121.120

Tower: 124.52 **ATIS:** 125.90
Ground: 121.92
121.75 when Delivery is in use
Delivery: 121.92

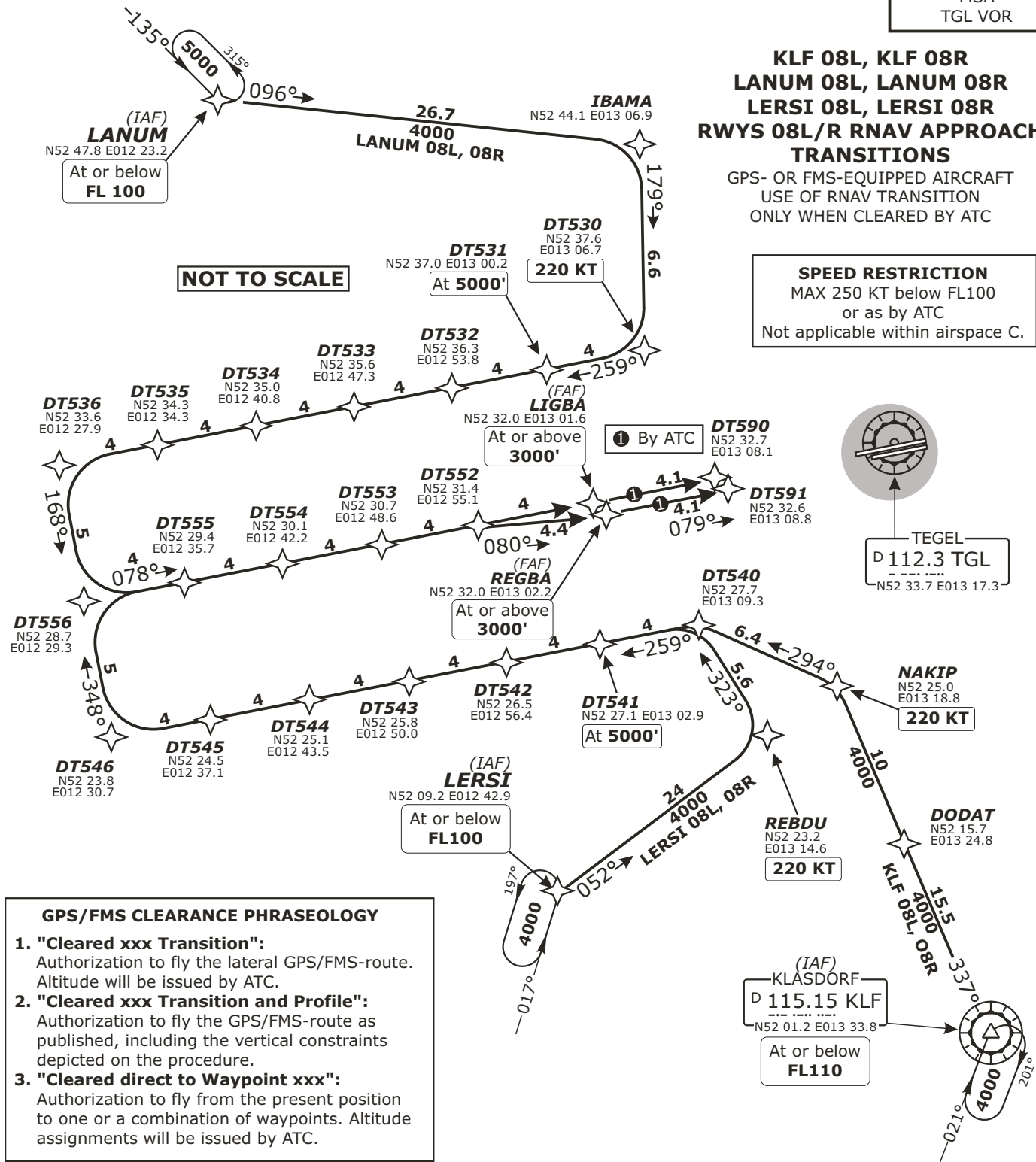
Alt Set: hPa (IN on request)
Trans level: by ATC Trans alt: 5000'
1. On downwind expect vectors to final.
2. Speed restrictions on Transition (even without profile) are always mandatory, unless cancelled by ATC.



**KLF 08L, KLF 08R
LANUM 08L, LANUM 08R
LERSI 08L, LERSI 08R
RWYS 08L/R RNAV APPROACH
TRANSITIONS**

GPS- OR FMS-EQUIPPED AIRCRAFT
USE OF RNAV TRANSITION
ONLY WHEN CLEARED BY ATC

SPEED RESTRICTION
MAX 250 KT below FL100
or as by ATC
Not applicable within airspace C.



TRANSITION	ROUTING
KLF 08L	KLF (FL110-) - DODAT - NAKIP (K220) - DT540 - DT541 (5000') - DT546 - DT556 - LIGBA (3000'+).
KLF 08R	KLF (FL110-) - DODAT - NAKIP (K220) - DT540 - DT541 (5000') - DT546 - DT556 - DT552 - REGBA (3000'+).
LANUM 08L	LANUM (FL100-) - IBAMA - DT530 (K220) - DT531 (5000') - DT536 - DT556 - LIGBA (3000'+).
LANUM 08R	LANUM (FL100-) - IBAMA - DT530 (K220) - DT531 (5000') - DT536 - DT556 - DT552 - REGBA (3000'+).
LERSI 08L	LERSI (FL100-) - REBDU (K220) - DT540 - DT541 (5000') - DT546 - DT556 - LIGBA (3000'+).
LERSI 08R	LERSI (FL100-) - REBDU (K220) - DT540 - DT541 (5000') - DT546 - DT556 - DT552 - REGBA (3000'+).

Valid for flight simulation use only - do not use for real life navigation

EDDT/TXL TEGEL

TRANS CHART NO.2
Revision 02. MAY 08
Effective 14 FEB 08

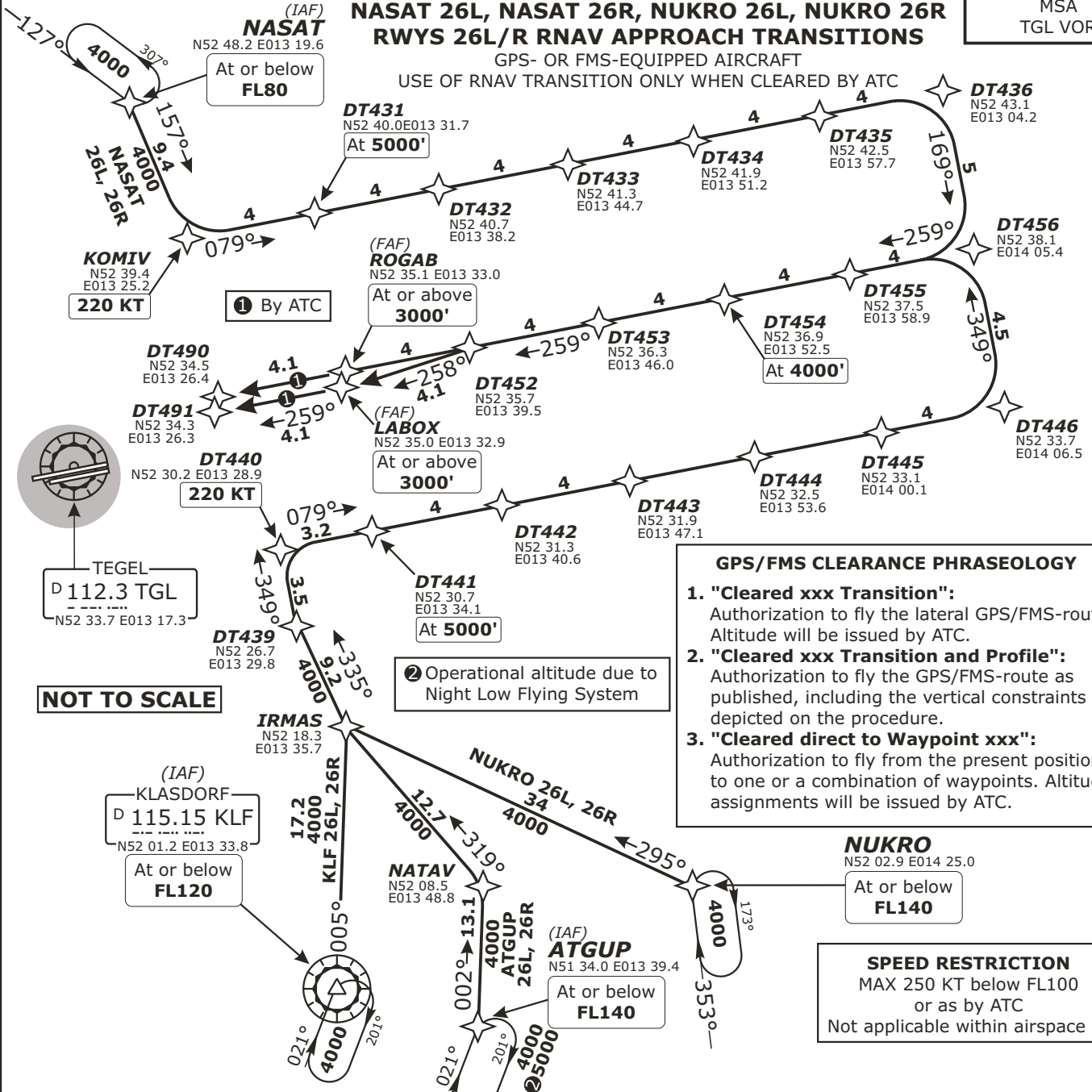
BERLIN, GERMANY

Radar: Bremen Radar 123.220 Arrival: Bremen Radar 119.700 Bremen Radar 126.420 Director: Berlin Director 121.120	Tower: 124.52 ATIS: 125.90 Ground: 121.92 121.75, when Delivery is in use Delivery: 121.92	Alt Set: hPa (IN on request) Trans level: by ATC Trans alt: 5000' 1. On downwind expect vectors to final. 2. Speed restrictions on Transition (even without profile) are always mandatory, unless cancelled by ATC.	<p>2400' 25 NM MSA TGL VOR</p>
--	---	--	--

**ATGUP 26L, ATGUP 26R, KLF 26L, KLF 26R,
NASAT 26L, NASAT 26R, NUKRO 26L, NUKRO 26R
RWYS 26L/R RNAV APPROACH TRANSITIONS**

GPS- OR FMS-EQUIPPED AIRCRAFT

USE OF RNAV TRANSITION ONLY WHEN CLEARED BY ATC



GPS/FMS CLEARANCE PHRASEOLOGY

- "Cleared xxx Transition":**
Authorization to fly the lateral GPS/FMS-route. Altitude will be issued by ATC.
- "Cleared xxx Transition and Profile":**
Authorization to fly the GPS/FMS-route as published, including the vertical constraints depicted on the procedure.
- "Cleared direct to Waypoint xxx":**
Authorization to fly from the present position to one or a combination of waypoints. Altitude assignments will be issued by ATC.

SPEED RESTRICTION
MAX 250 KT below FL100
or as by ATC
Not applicable within airspace C.

TRANSITION	ROUTING
ATGUP 26L	ATGUP (FL140-) - NATAV - IRMAS - DT439 - DT440 (K220) - DT441 (5000') - DT446 - DT456 - DT454 (4000') - DT452 - LABOX (3000'+).
ATGUP 26R	ATGUP (FL140-) - NATAV - IRMAS - DT439 - DT440 (K220) - DT441 (5000') - DT446 - DT456 - DT454 (4000') - ROGAB (3000'+).
KLF 26L	KLF (FL120-) - IRMAS - DT439 - DT440 (K220) - DT441 (5000') - DT446 - DT456 - DT454 (4000') - DT452 - LABOX (3000'+).
KLF 26R	KLF (FL120-) - IRMAS - DT439 - DT440 (K220) - DT441 (5000') - DT446 - DT456 - DT454 (4000') - ROGAB (3000'+).
NASAT 26L	NASAT (FL80-) - KOMIV (K220) - DT431 (5000') - DT436 - DT456 - DT454 (4000') - DT452 - LABOX (3000'+).
NASAT 26R	NASAT (FL80-) - KOMIV (K220) - DT431 (5000') - DT436 - DT456 - DT454 (4000') - ROGAB (3000'+).
NUKRO 26L	NURKO (FL140-) - IRMAS - DT439 - DT440 (K220) - DT441 (5000') - DT446 - DT456 - DT454 (4000') - DT452 - LABOX (3000'+).
NUKRO 26R	NURKO (FL140-) - IRMAS - DT439 - DT440 (K220) - DT441 (5000') - DT446 - DT456 - DT454 (4000') - ROGAB (3000'+).

CHANGES: Frequencies