

Radar: Bremen Radar 123.220
Arrival: Bremen Radar 119.700
Director: Bremen Radar 126.420
Berlin Director 121.120

Tower: 124.52
Ground: 121.92
Delivery: 121.75
ATIS: 125.90
when Delivery is in use

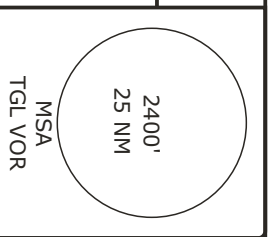
Alt Set: hPa (IN on request)
Trans level: by ATC
Trans alt: 5000'

BATEL SIX ZULU (BATEL 6Z)
GOLBO ONE ZULU (GOLBO 1Z)
RENKI FIVE ZULU (RENKI 5Z)
VIBIS TWO ZULU (VIBIS 2Z)

AKUDI THREE ZULU (AKUDI 3Z)
NUKRO FOUR ZULU (NUKRO 4Z)
RUDAK FOUR ZULU (RUDAK 4Z)
MILGU TWO ZULU (MILGU 2Z)

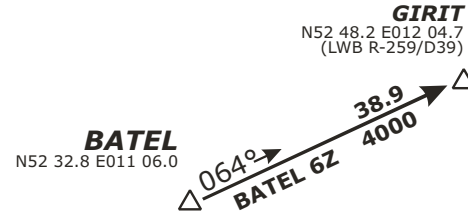
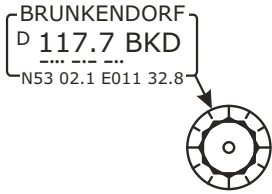
FROM NORTH
BRNAV EQUIPMENT NECESSARY

FROM SOUTH
BRNAV EQUIPMENT NECESSARY

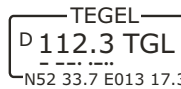
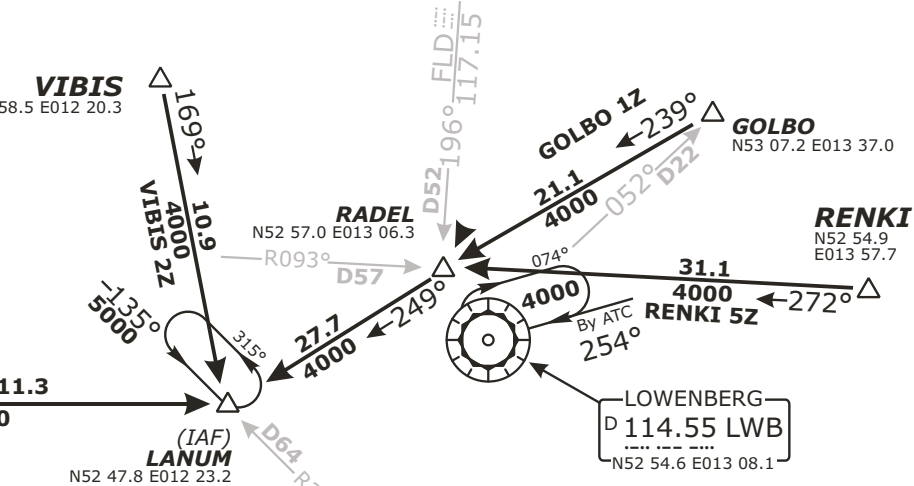


RWY 08L/R ARRIVALS

SPEED RESTRICTION
MAX 250 KT below FL100
or as by ATC
Not applicable within airspace C.



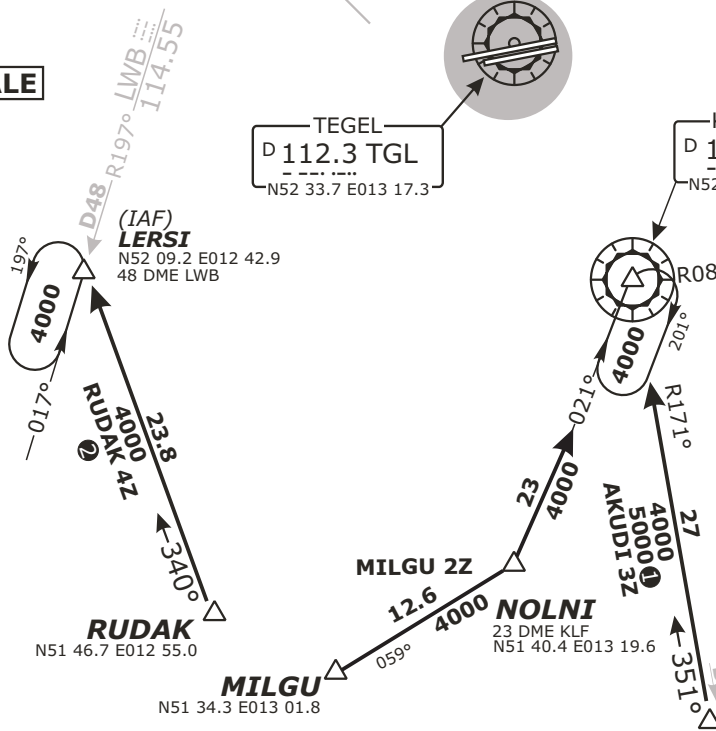
NOT TO SCALE



VERTICAL PLANNING INFORMATION
Pilots should plan for possible descent clearance as follows:

- BATEL 6Z, VIBIS 2Z:** at or below **FL100** by LANUM.
- RENKI 5Z, GOLBO 1Z:** at or below **FL100** by RADEL.
- AKUDI 3Z, MILGU 2Z:** at or below **FL110** by KLF.
- NUKRO 4Z:** at or below **FL140** by NUKRO, at or below **FL110** by KLF.
- RUDAK 4Z:** at or below **FL100** by LERSI.

ACTUAL DESCEND CLEARANCE WILL BE AS DIRECTED BY ATC.



Operational altitude due to Night Low Flying System

Radar: Bremen Radar 123.220
Arrival: Bremen Radar 119.700
Director: Berlin Director 126.420
Director: Berlin Director 121.120

Tower: 124.52
Ground: 121.92
Delivery: 121.75
Delivery: 121.92

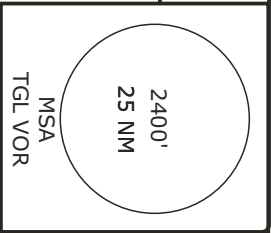
Alt Set: hPa (IN on request)
Trans level: by ATC
Trans alt: 5000'

BATEL THREE HOTEL (BATEL 3H)
GOLBO ONE HOTEL (GOLBO 1H)
RENKI THREE HOTEL (RENKI 2H)
VIBIS THREE HOTEL (VIBIS 3H)

AKUDI FOUR VICTOR (AKUDI 4V)
MILGU THREE VICTOR (MILGU 3V)
NUKRO THREE VICTOR (NUKRO 3V)
RUDAK FIVE VICTOR (RUDAK 5V)

FROM NORTH
BRNAV EQUIPMENT NECESSARY

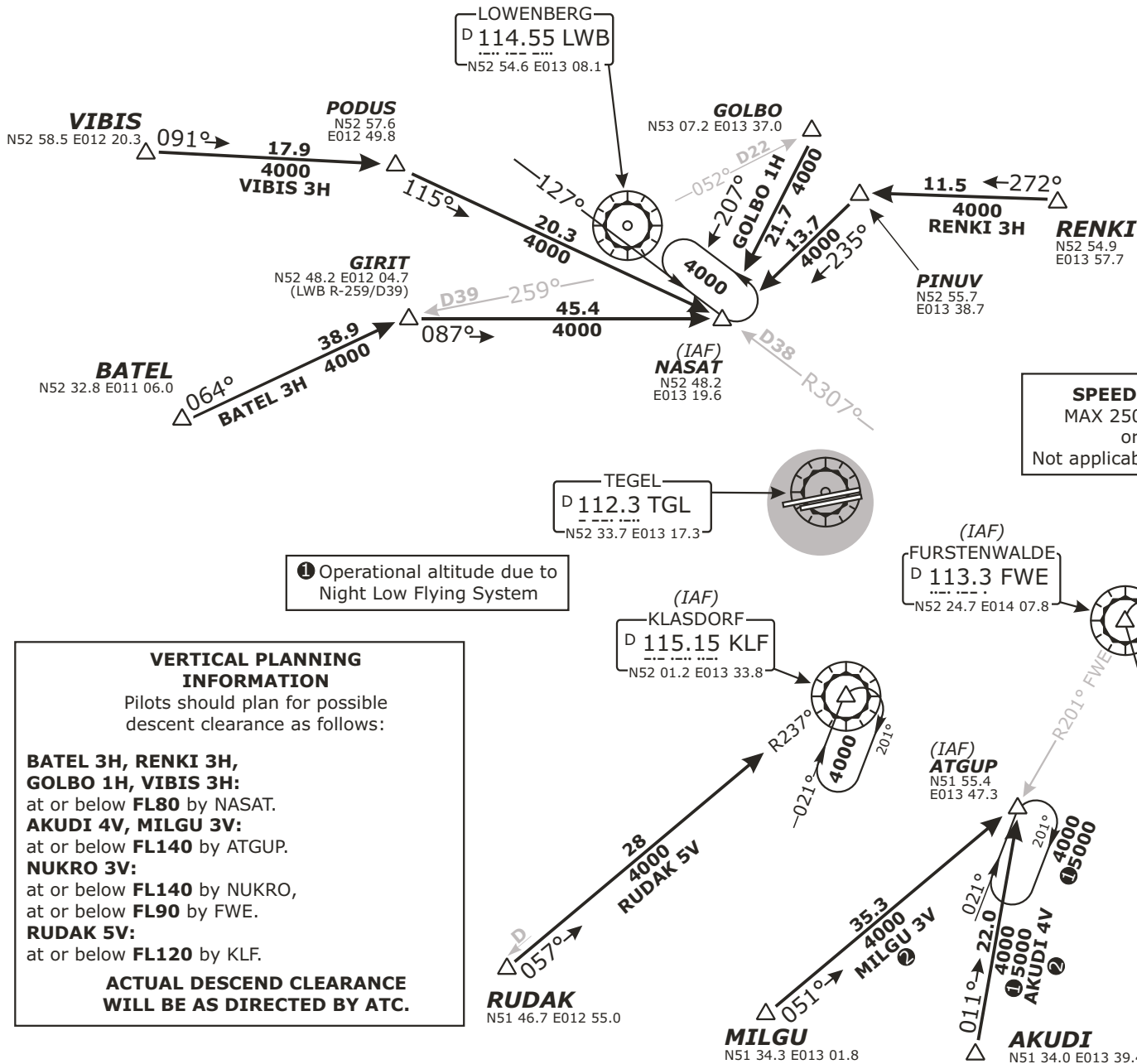
FROM SOUTH
BRNAV equipment necessary.



RWY 26L/R ARRIVALS

NOT TO SCALE

SPEED RESTRICTION
MAX 250 KT below FL100
or as by ATC
Not applicable within airspace C.



Operational altitude due to Night Low Flying System

VERTICAL PLANNING INFORMATION
Pilots should plan for possible descent clearance as follows:
BATEL 3H, RENKI 3H, GOLBO 1H, VIBIS 3H:
at or below **FL80** by NASAT.
AKUDI 4V, MILGU 3V:
at or below **FL140** by ATGUP.
NUKRO 3V:
at or below **FL140** by NUKRO,
at or below **FL90** by FWE.
RUDAK 5V:
at or below **FL120** by KLF.
ACTUAL DESCEND CLEARANCE WILL BE AS DIRECTED BY ATC.