



Radar: Bremen Radar 123.220  
Departure: Bremen Radar 120.620  
Arrival: Bremen Radar 119.700  
Bremen Radar 126.420

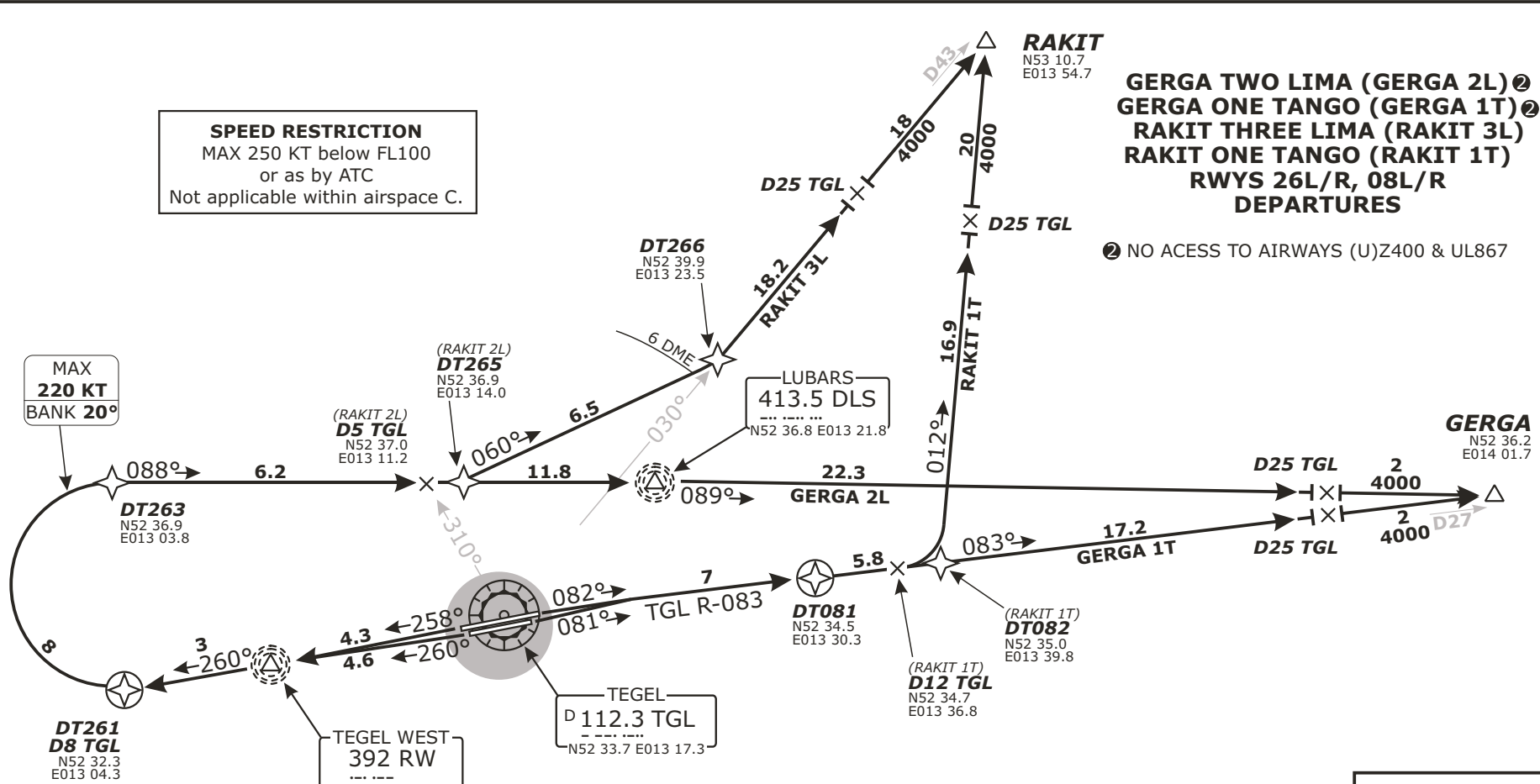
Tower: 124.52  
Ground: 121.92  
Delivery: 121.75  
ATIS: 125.90  
when Delivery is in use

Trans level: by ATC Trans alt: 5000'

1. Remain on TWR frequency until passing altitude 2000 ft, then contact Bremen Radar

**GERGA TWO LIMA (GERGA 2L) ②**  
**GERGA ONE TANGO (GERGA 1T) ②**  
**RAKIT THREE LIMA (RAKIT 3L)**  
**RAKIT ONE TANGO (RAKIT 1T)**  
**RWYS 26L/R, 08L/R**  
**DEPARTURES**

② NO ACCESS TO AIRWAYS (U)Z400 & UL867



**GERGA 2L, RAKIT 3L: Initial climb clearance 4000'**  
**GERGA 1T, RAKIT 1T: Initial climb clearance 5000'**

① After D12 TGL BRNAV equipment necessary.

SID	RWY	ROUTING	GPS/FMS RNAV
<b>GERGA 2L</b> ②	<b>26L/R</b>	Climb on runway track to <b>600'</b> , then to RW, 260° bearing to D8 TGL, turn RIGHT MAX 220KT, intercept 088° bearing to DLS, 089° bearing to GERGA.	<b>(600'+)</b> - RW - DT261 - DT263 (K220-) - DLS - GERGA.
<b>GERGA 1T</b> ②	<b>08L/R</b>	Climb on runway track to <b>600'</b> , intercept TGL R-083 to GERGA.	<b>(600'+)</b> - DT081 - GERGA.
<b>RAKIT 3L</b>	<b>26L/R</b>	Climb on runway track to <b>600'</b> , then to RW, 260° bearing to D8 TGL, turn RIGHT MAX 220KT, intercept 088° bearing towards DLS, at D5 TGL (crossing TGL R-310) turn LEFT, 060° track, intercept TGL R-030 to RAKIT.	<b>(600'+)</b> - RW - DT261 - DT263 (K220-) - DT265 - DT266 - RAKIT.
<b>RAKIT 1T</b> ①	<b>08L/R</b>	Climb on runway track to <b>600'</b> , intercept TGL R-083 to D12 TGL, turn LEFT, 012° track to RAKIT.	<b>(600'+)</b> - DT081 - DT082 - RAKIT.

**Valid for flight simulation use only - do not use for real life navigation**

