

EDDT/TXL TEGEL

APP CHART NO.1
Revision 02. MAY 08
Effective 21 DEC 06

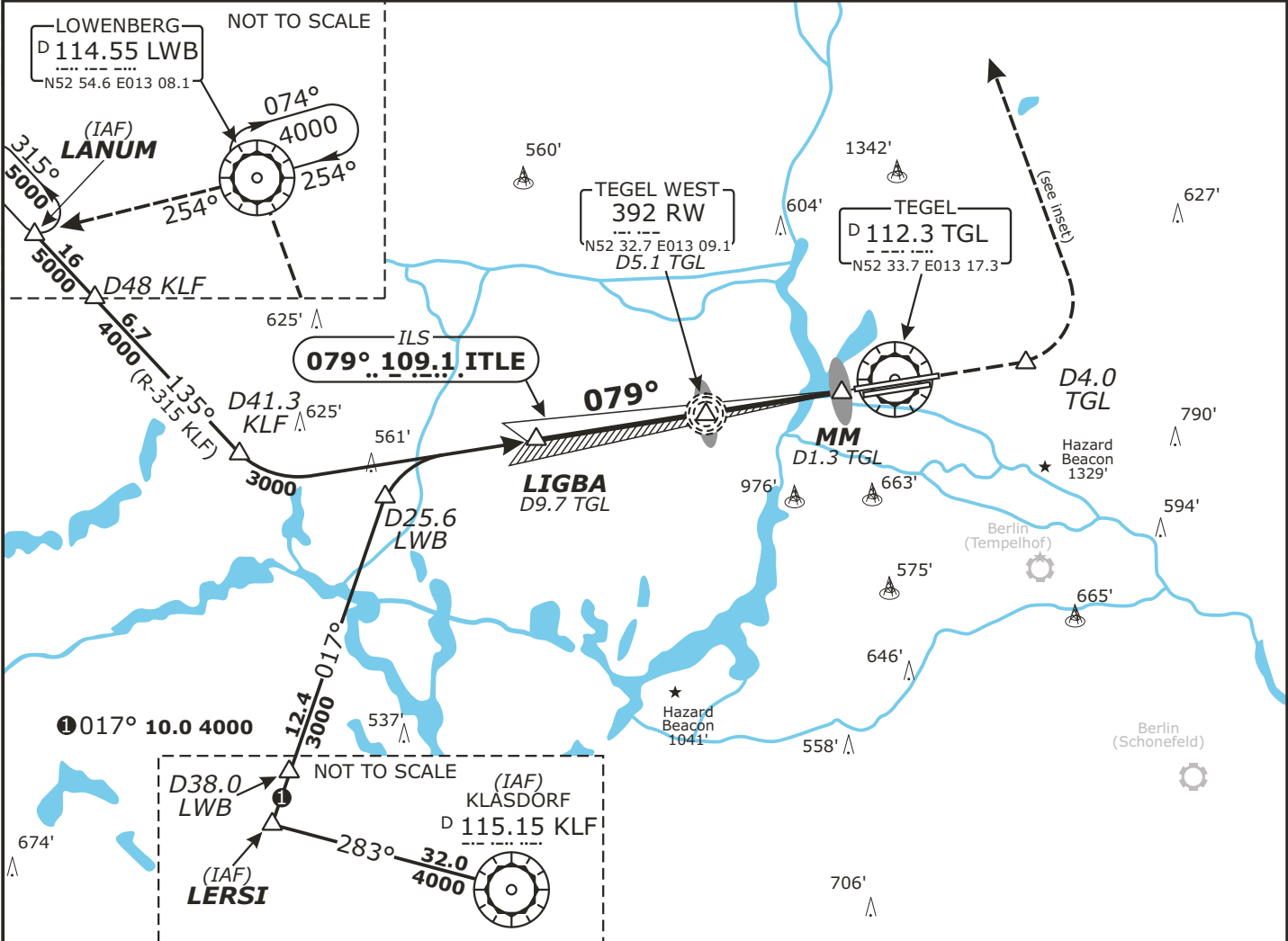
BERLIN, GERMANY ILS or LOC Rwy 08L

Radar: Bremen Radar 123.220	Tower: 124.52 ATIS: 125.90
Arrival: Bremen Radar 119.700	Ground: 121.92
Bremen Radar 126.420	121.75, when Delivery is in use
Director: Berlin Director 121.120	Delivery: 121.92

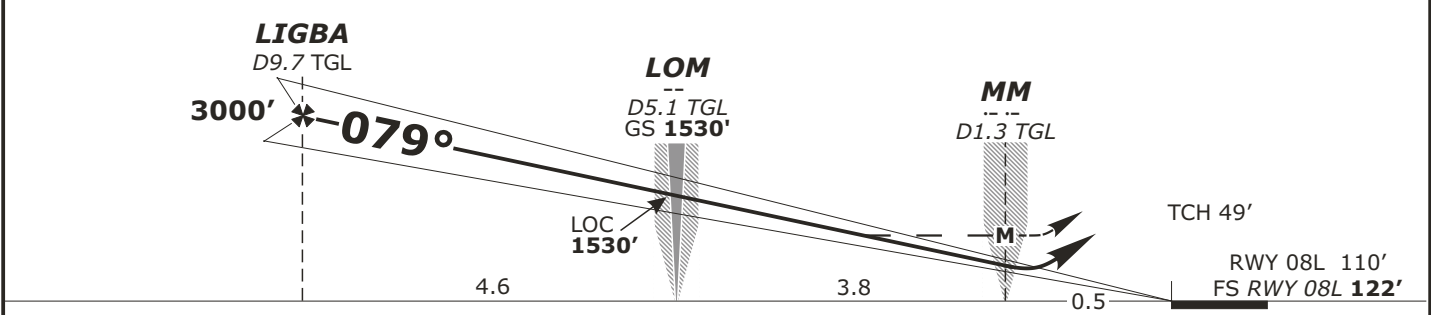
LOC ITLE 109.1	Final ApcH Crs 079°	GS LOM 1530' (1408')	CAT I : DH 322' (200') CAT I I: RA 102' DH 222' (100')	Apt Elev 122' FS: RWY 122' RWY 110'	<p>2400' 25 NM</p> <p>MSA TGL VOR</p>
-----------------------------	----------------------------------	-----------------------------------	---	---	---

MISSED APCH: Climb on rwy track to MAX 3000'. At D4.0 East of TGL VOR climb to 5000' and turn LEFT via LWB VOR to LANUM.

Alt Set: hPa (IN on req) Rwy Elev: 4 hPa Trans level: By ATC Trans alt: 5000'
LOC: **DME REQUIRED.**



LOC (GS out)	TGL DME	9.0	8.0	7.0	6.0	5.0	4.0	3.0
	ALTITUDE	2770'	2460'	2140'	1820'	1500'	1180'	860'



Flight Simulator-OPS			STRAIGHT-IN LANDING RWY 08L					
ILS DA(H) 322' (200')		CAT II ILS RA 102' DA(H) 222' (100')		LOC (GS out) MDA(H) 602' (480')				
RVR 550m		RVR 300m		RVR 1000m				
				RVR 1200m				
				RVR 1600m				
Gnd speed-Kts			70	90	100	120	140	160
ILS GS 3.00° or LOC Descent Gradient 5.2%			377	484	538	646	753	861
MAP at MM/D1.3 TGL								

Valid for flight simulation use only - do not use for real life navigation

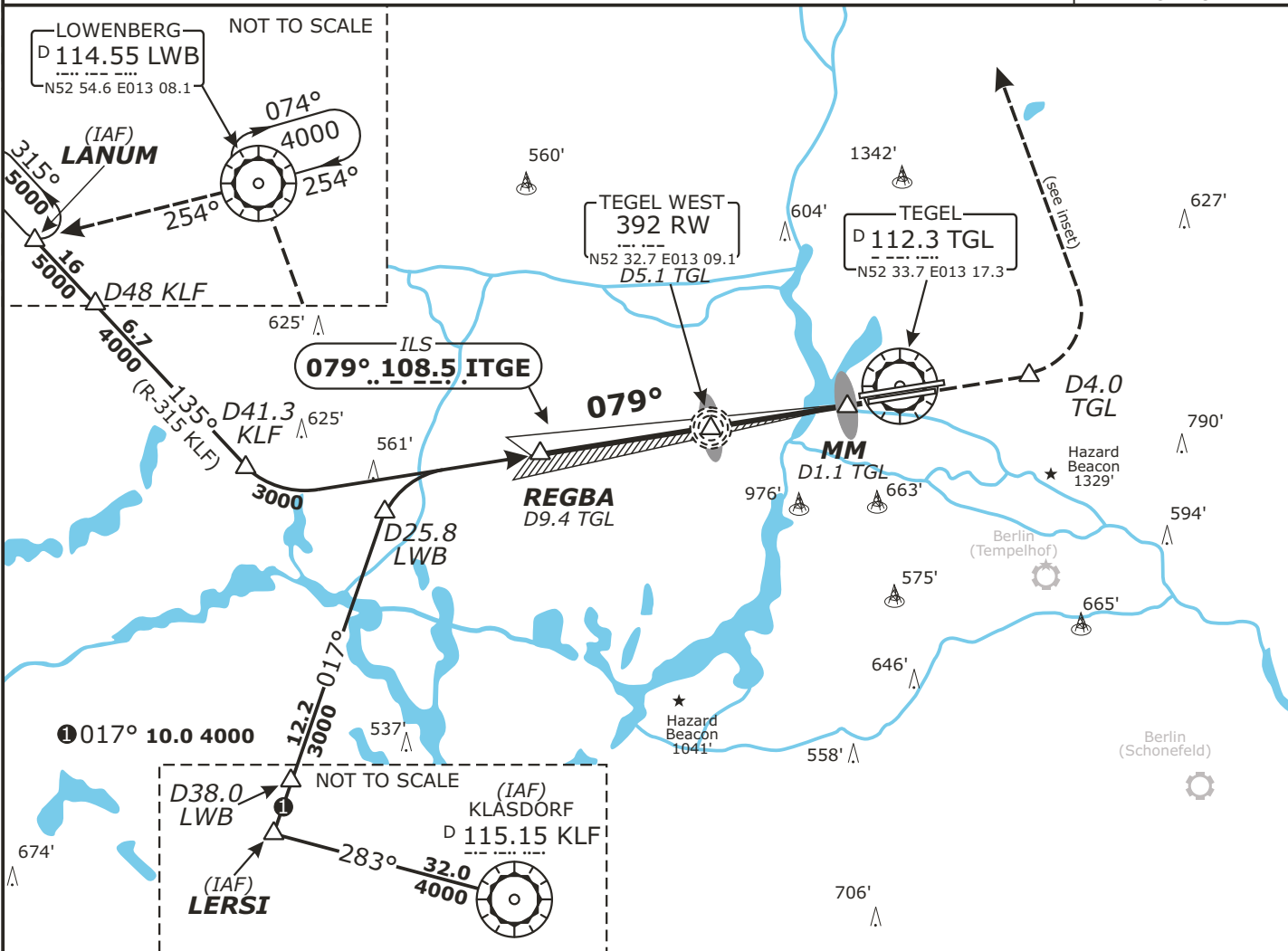
CHANGES: Frequencies

EDDT/TXL TEGEL

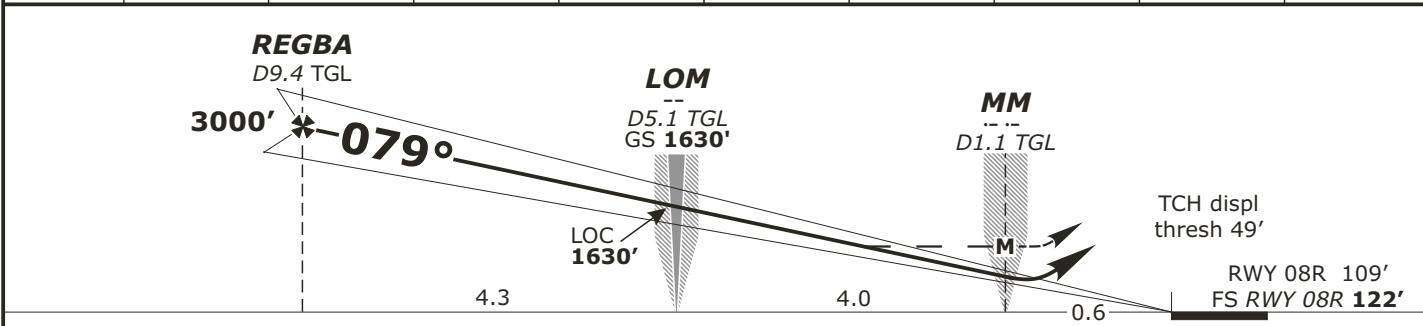
APP CHART NO.2
Revision 02. MAY 08
Effective 21 DEC 06

BERLIN, GERMANY ILS or LOC Rwy 08R

Radar: Bremen Radar 123.220 Arrival: Bremen Radar 119.700 Bremen Radar 126.420 Director: Berlin Director 121.120	Tower: 124.52 ATIS: 125.90 Ground: 121.92 121.75, when Delivery is in use Delivery: 121.92				
LOC ITGE 108.5	Final Apch Crs 079°	GS LOM 1630' (1508')	ILS DA(H) Refer to Minimums	Apt Elev 122' FS: RWY 122' RWY 109'	<p>2400' 25 NM</p> <p>MSA TGL VOR</p>
MISSED APCH: Climb on rwy track to MAX 3000'. At D4.0 East of TGL VOR climb to 5000' and turn LEFT via LWB VOR to LANUM.					
Alt Set: hPa (IN on req) LOC: DME REQUIRED.		Rwy Elev: 4 hPa	Trans level: By ATC	Trans alt: 5000'	



LOC (GS out)	TGL DME	9.0	8.0	7.0	6.0	5.0	4.0	3.0	2.0
	ALTITUDE	2870'	2550'	2230'	1920'	1600'	1280'	960'	640'



Flight Simulator-OPS		STRAIGHT-IN LANDING RWY 08R					
DA(H)	A: 367' (245') C: 387' (265')	Gnd speed-Kts					
	B: 377' (255') D: 397' (275')	70 90 100 120 140 160					
LOC (GS out) MDA(H) 573' (451')		ILS GS 3.00° or LOC Descent Gradient 5.2%					
A RVR 600m		377 484 538 646 753 861					
B RVR 650m		MAP at MM/D1.1 TGL					
C RVR 650m							
D RVR 1600m							

Valid for flight simulation use only - do not use for real life navigation

CHANGES: Frequencies

EDDT/TXL TEGEL

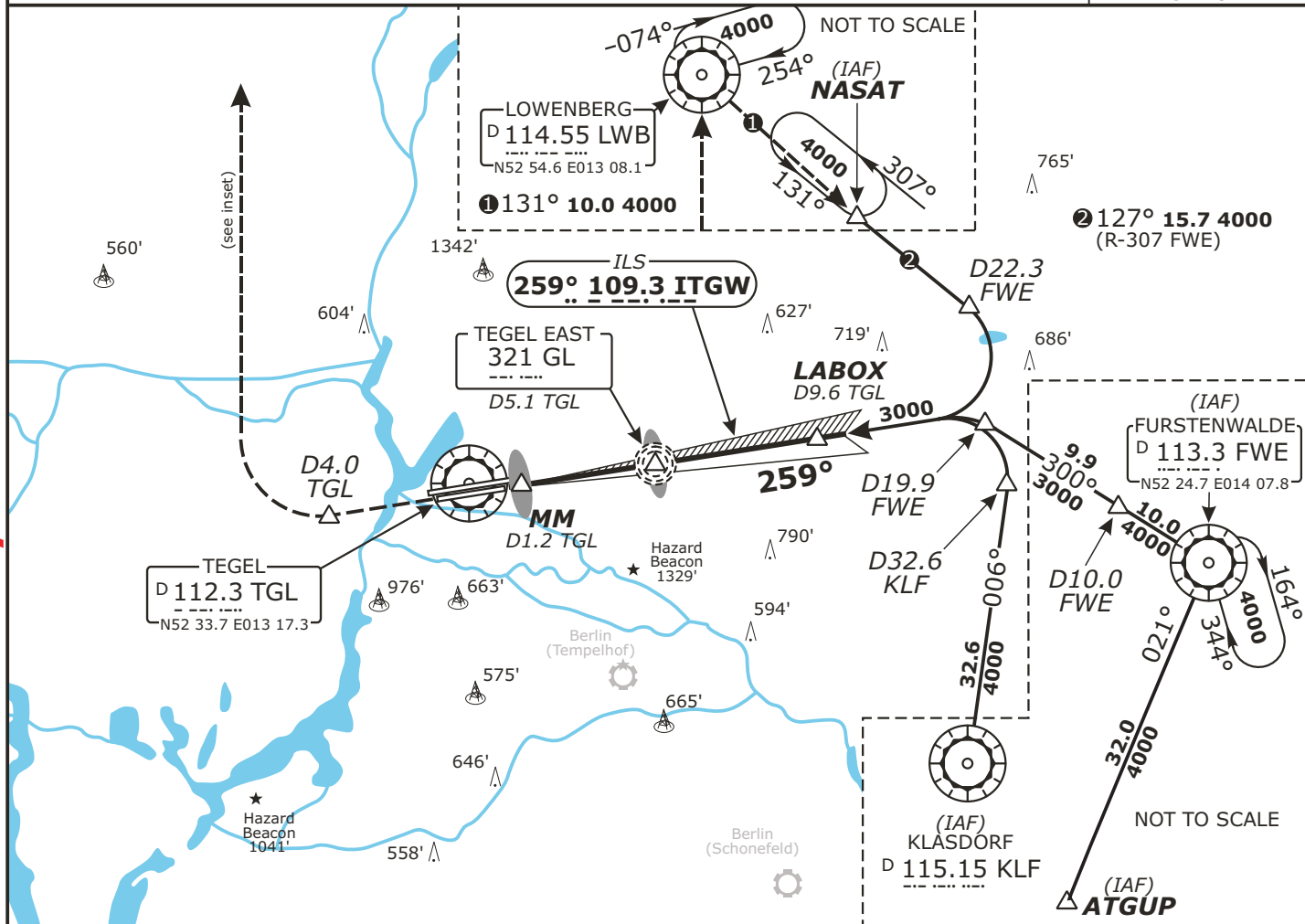
APP CHART NO.3
Revision 02. MAY 08
Effective 14 FEB 08

BERLIN, GERMANY ILS or LOC Rwy 26L

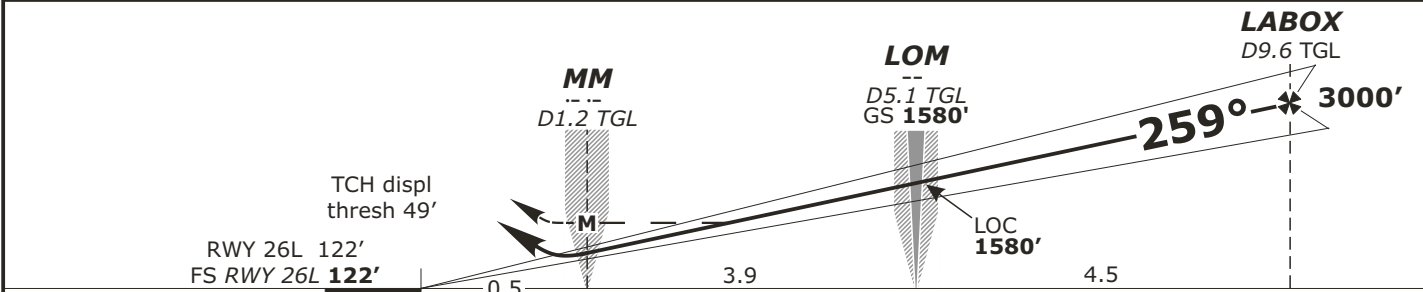
Radar: Bremen Radar 123.220 Arrival: Bremen Radar 119.700 Bremen Radar 126.420 Director: Berlin Director 121.120	Tower: 124.52 ATIS: 125.90 Ground: 121.92 121.75, when Delivery is in use Delivery: 121.92	GS LOM 1580' (1458')	ILS DA(H) Refer to Minimums	Apt Elev 122' FS: RWY 122' RWY 122'	
LOC ITGW 109.3	Final Apch Crs 259°				

MISSED APCH: Climb on rwy track to MAX 3000'. At D4.0 West of TGL VOR climb to 4000' and turn RIGHT via LWB VOR to NASAT.

Alt Set: hPa (IN on req) Rwy Elev: 4 hPa Trans level: By ATC Trans alt: 5000'
LOC: **DME REQUIRED.**



LOC (GS out)	TGL DME	2.0	3.0	4.0	5.0	6.0	7.0	8.0	9.0
	ALTITUDE	590'	910'	1230'	1550'	1860'	2180'	2500'	2820'



Flight Simulator-OPS					STRAIGHT-IN LANDING RWY 26L				
ILS					CAT II ILS				
DA(H) A: 363' (241')					Gnd speed-Kts				
B: 373' (251')					70 90 100 120 140 160				
C: 383' (261')					ILS GS 3.00° or				
D: 393' (271')					LOC Descent Gradient 5.2%				
RA A 105'					MAP at MM/D1.2 TGL				
DA(H) 228' (106')					377 484 538 646 753 861				
RA B 121'									
DA(H) 244' (122')									
RA C 182'									
DA(H) 304' (182')									
RA D 197'									
DA(H) 317' (195')									
LOC (GS out)					MDA(H) 540' (418')				
RVR 600m					RVR 900m				
RVR 300m					RVR 1000m				
RVR 650m					RVR 1400m				

Valid for flight simulation use only - do not use for real life navigation

CHANGES: Frequencies

EDDT/TXL TEGEL

APP CHART NO.4
Revision 02. MAY 08
Effective 14 FEB 08

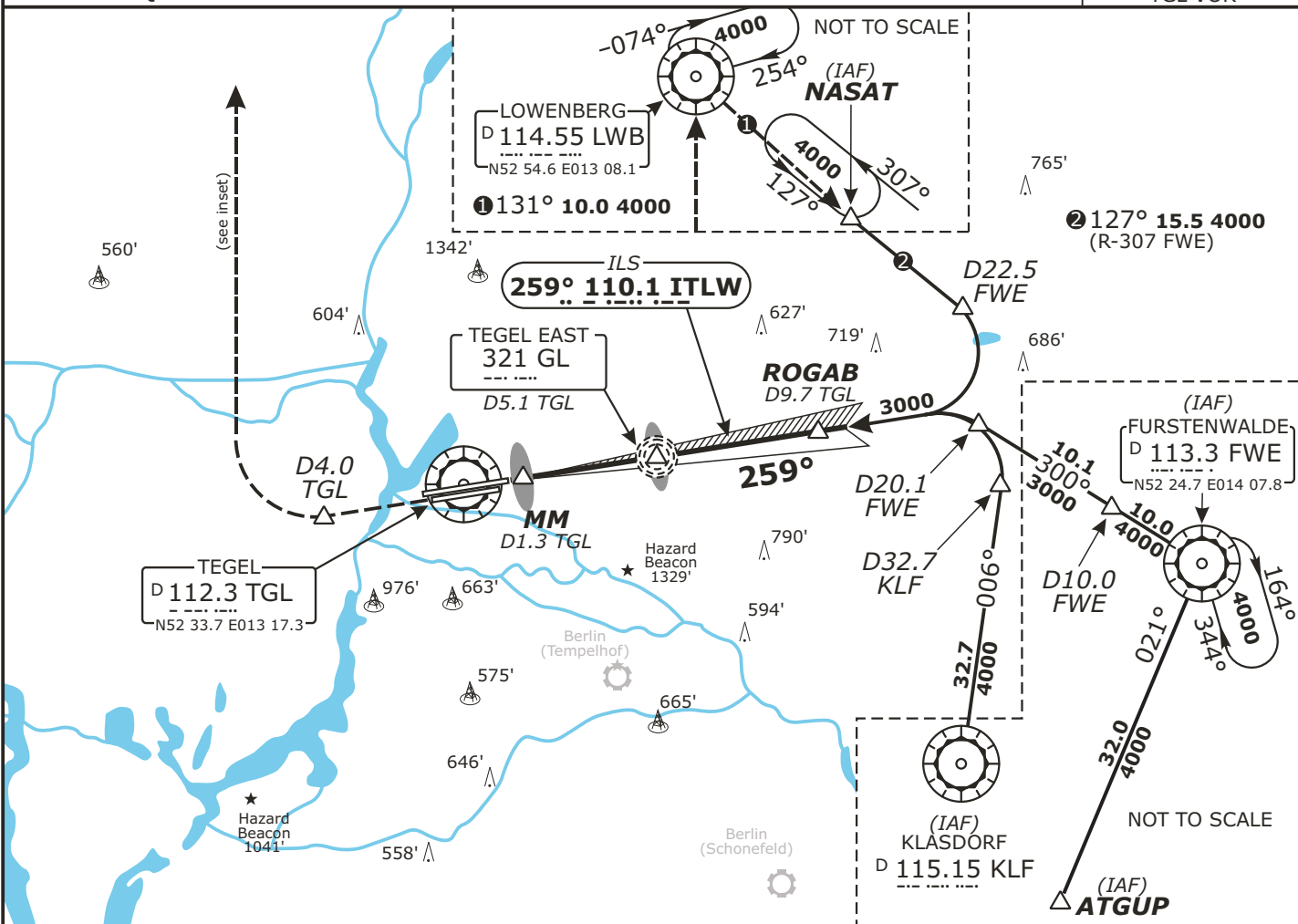
BERLIN, GERMANY ILS or LOC Rwy 26R

Radar: Bremen Radar 123.220 Arrival: Bremen Radar 119.700 Director: Berlin Director 121.120	Tower: 124.52 Ground: 121.92 Delivery: 121.92	ATIS: 125.90
--	--	---------------------

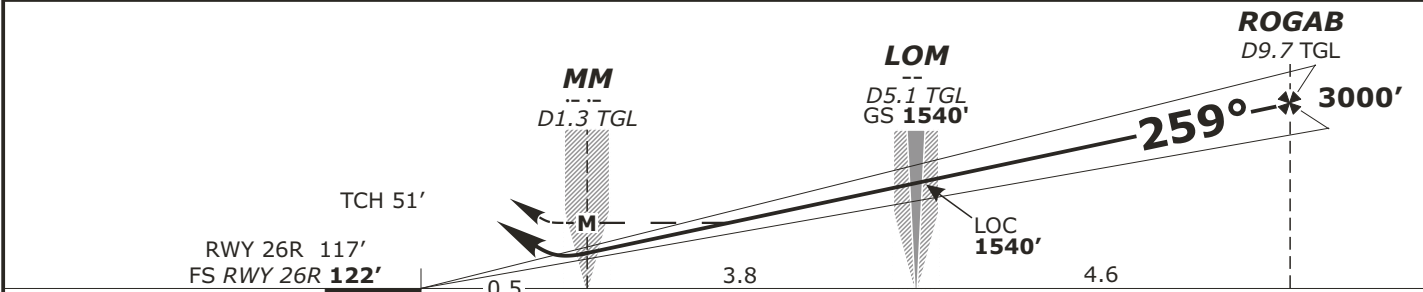
LOC ITLW 110.1	Final Apch Crs 259°	GS LOM 1540' (1418')	ILS DA(H) Refer to Minimums	Apt Elev 122' FS: RWY 122' RWY 117'	2400' 25 NM
--------------------------	-------------------------------	--------------------------------	--------------------------------	---	----------------

MISSED APCH: Climb on rwy track to MAX 3000'. At D4.0 West of TGL VOR climb to 4000' and turn RIGHT via LWB VOR to NASAT.

Alt Set: hPa (IN on req) Rwy Elev: 4 hPa Trans level: By ATC Trans alt: 5000'
LOC: **DME REQUIRED.**



LOC (GS out)	TGL DME	2.0	3.0	4.0	5.0	6.0	7.0	8.0	9.0
	ALTITUDE	560'	870'	1190'	1510'	1830'	2150'	2470'	2780'



STRAIGHT-IN LANDING RWY 26R		Gnd speed-Kts	70	90	100	120	140	160
ILS		ILS GS 3.00° or LOC Descent Gradient 5.2%	377	484	538	646	753	861
CAT II ILS		MAP at MM/D1.3 TGL						

DA(H) A: 340' (218') C: 360' (238') B: 350' (228') D: 370' (248')	ABCD RA 95' DA(H) 222' (100')	LOC (GS out) MDA(H) 525' (403')
RVR 600m	RVR 300m	RVR 900m
		RVR 1000m
		RVR 1400m

Valid for flight simulation use only - do not use for real life navigation

CHANGES: Frequencies