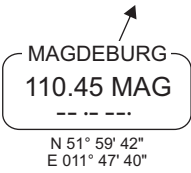


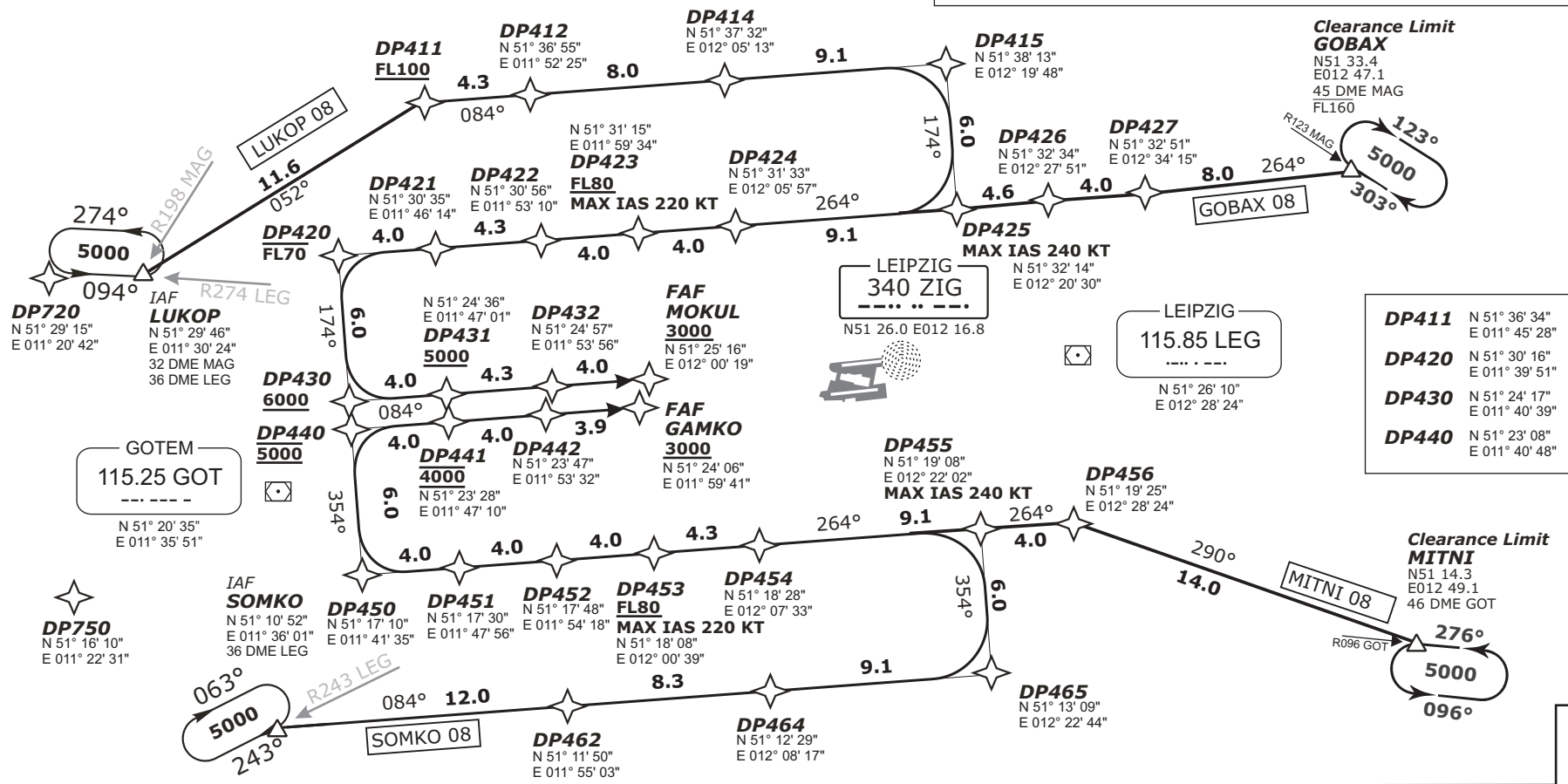
LUKOP 08, GOBAX 08, SOMKO 08, MITNI 08 RWYS 08L/R RNAV APPROACH TRANSITIONS GPS- OR FMS-EQUIPPED AIRCRAFT



Clearance phraseology for GPS/FMS routing

- "Cleared xxx transition"**
Permission to fly the lateral part of the GPS/FMS routing including assigned speeds. Altitudes will be assigned separately.
- "Cleared xxx transition and profile"**
Permission to fly the GPS/FMS routing including assigned speeds and altitudes.
- "Cleared direct waypoint xxx"**
Permission to fly from the present position direct to the given waypoint including the continuation of the flight on the lateral part of the GPS/FMS routing adjoining that waypoint, including assigned speeds. Altitudes will be assigned separately.

1. Use of transition procedures only when cleared by ATC.
2. On downwind expect vectors to final.
3. Speed restrictions are always mandatory, unless cancelled by ATC.

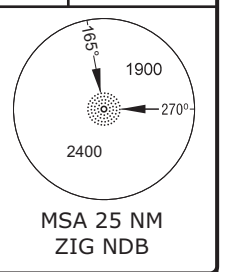


DP411	N 51° 36' 34"	E 011° 45' 28"
DP420	N 51° 30' 16"	E 011° 39' 51"
DP430	N 51° 24' 17"	E 011° 40' 39"
DP440	N 51° 23' 08"	E 011° 40' 48"

MÜNCHEN RADAR
124.170 133.570
LEIPZIG DIRECTOR
131.020 129.100
128.470

TOWER (N) 125.950
TOWER (S) 121.100
GROUND 121.670
DELIVERY 121.800
ATIS 123.950

Mag. Variation 2° E
Elevation 470'
Transition altitude 5000'
Transition level by ATC



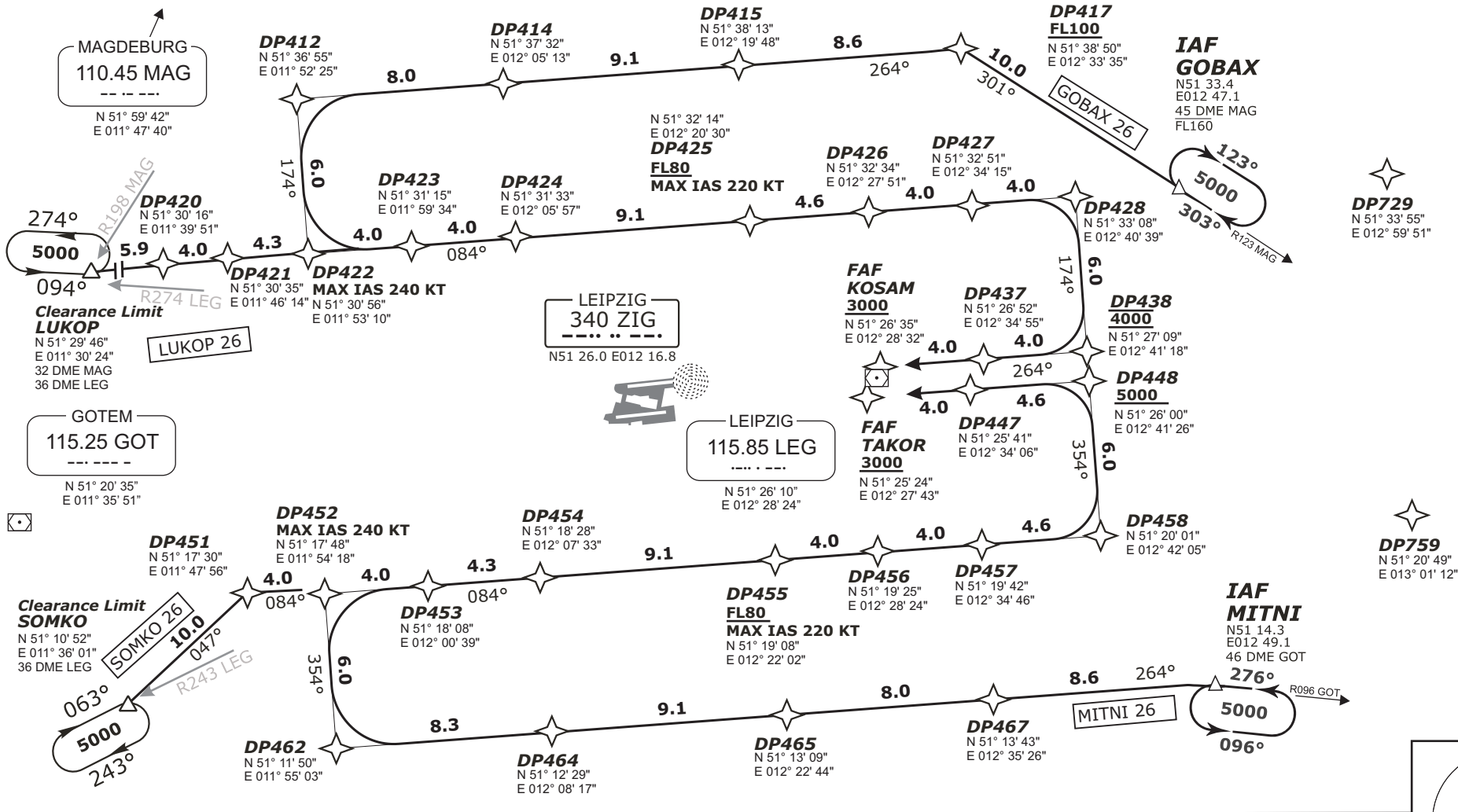
TRANSITION	ROUTING
GOBAX 08	GOBAX (F160-) - DP425 (K240-) - DP423 (F080+; K220-) - DP420 (F070-) - DP430 (6000'+) - DP431 (5000'+) - MOKU (3000'+)
LUKOP 08	LUKOP - DP411 (F100+) - DP415 - DP425 (K240-) - DP423 (F080+; K220-) - DP420 (F070-) - DP430 (6000'+) - DP431 (5000'+) - MOKUL (3000'+)
MITNI 08	MITNI - DP456 - DP455 (K240-) - DP453 (F080+; K220-) - DP450 - DP440 (5000') - DP441 (4000') - GAMKO (3000'+)
SOMKO 08	SOMKO - DP465 - DP455 (K240-) - DP453 (F080+; K220-) - DP450 - DP440 (5000') - DP441 (4000') - GAMKO (3000'+)

Valid for flight simulation use only - not use for real life navigation

**LUKOP 26, GOBAX 26,
SOMKO 26, MITNI 26
RWYS 26L/R
RNAV APPROACH TRANSITIONS**
GPS- OR FMS-EQUIPPED AIRCRAFT

1. Use of transition procedures only when cleared by ATC.
2. On downwind expect vectors to final.
3. Speed restrictions are always mandatory, unless cancelled by ATC.

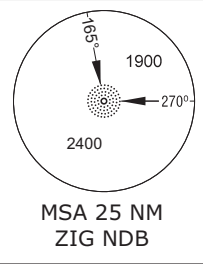
Clearance phraseology for
GPS/FMS routing
see page
"Transition RWY 08L/R"



MÜNCHEN RADAR
LEIPZIG DIRECTOR
124.170 133.570
131.020 129.100
128.470

TOWER (N)
125.950
TOWER (S)
121.100
GROUND
121.670
DELIVERY
121.800
ATIS
123.950

Mag. Variation 2° E
Elevation 470'
Transition altitude 5000'
Transition level by ATC



Leipzig, GERMANY
Leipzig/Halle (LEJ)



Effective 2009-03-12
Transition RWY 26L/R
EDDP

TRANSITION	ROUTING
GOBAX 26	GOBAX (F160-) - DP417 (F100+) - DP412 - DP422 (K240-) - DP425 (F080+; K220-) - DP428 (F070-) - DP438 (4000') - KOSAM (3000'+)
LUKOP 26	LUKOP - DP422 (K240-) - DP425 (F080+; K220-) - DP428 (F070-) - DP438 (4000') - KOSAM (3000'+)
MITNI 26	MITNI - DP462 - DP452 (K240-) - DP455 (F080+; K220-) - DP458 - DP448 (5000'+) - TAKOR (3000'+)
SOMKO 26	SOMKO - DP451 - DP452 (K240-) - DP455 (F080+; K220-) - DP458 - DP448 (5000'+) - TAKOR (3000'+)

Valid for flight simulation use only - do not use for real life navigation