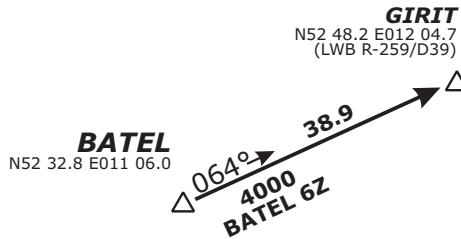
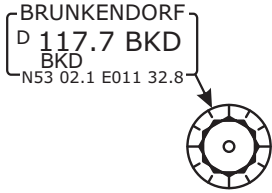


RWY 09R ARRIVALS

SPEED RESTRICTION
 MAX 250 KT below FL100
 or as by ATC
 Not applicable within airspace C.

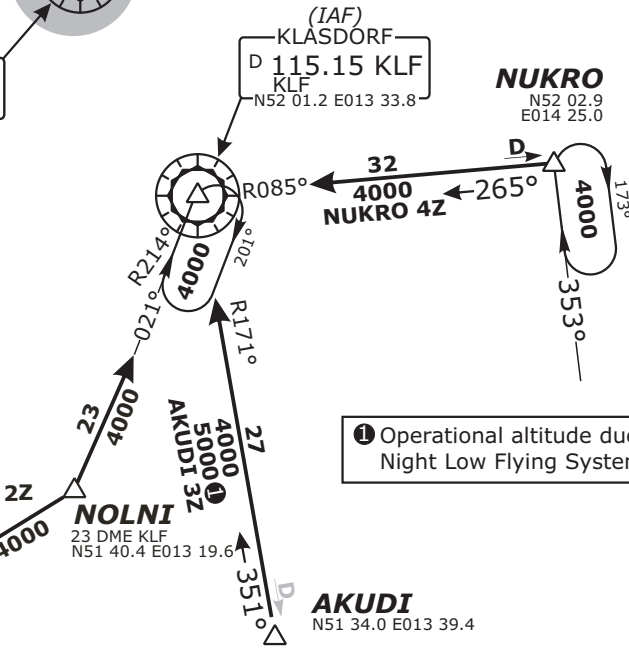
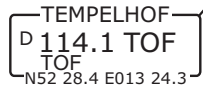
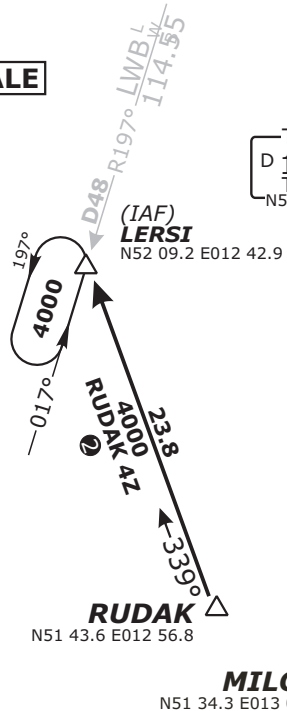
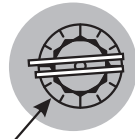
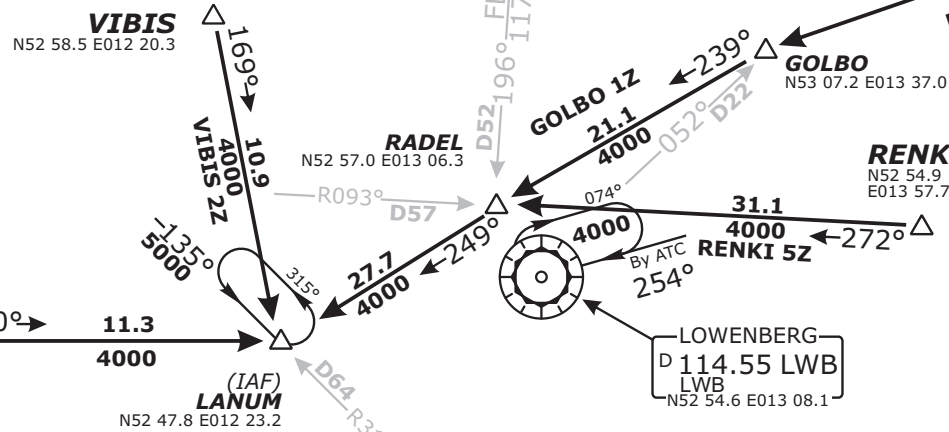


NOT TO SCALE

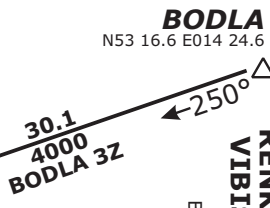
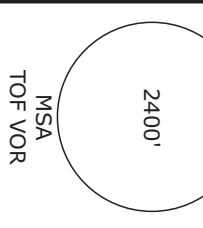
VERTICAL PLANNING INFORMATION
 Pilots should plan for possible descent clearance as follows:

- BATEL 6Z, VIBIS 2Z:** at or below **FL120** by LANUM.
- BODLA 3Z, RENKI 5Z, GOLBO 1Z:** at or below **FL120** by RADEL.
- AKUDI 3Z, MILGU 2Z:** at or below **FL100** by KLF.
- NUKRO 4Z:** at or below **FL140** by NUKRO, at or below **FL100** by KLF.
- RUDAK 3Z:** at or below **FL100** by LERSI.

ACTUAL DESCEND CLEARANCE WILL BE AS DIRECTED BY ATC.



① Operational altitude due to Night Low Flying System



BATEL SIX ZULU (BATEL 6Z)
BODLA THREE ZULU (BODLA 3Z)
LEINE FIVE ZULU (DLE 5Z)
GOLBO ONE ZULU (GOLBO 1Z)
RENKI FIVE ZULU (RENKI 5Z)
VIBIS TWO ZULU (VIBIS 2Z)

FROM NORTH
 BRNAV EQUIPMENT NECESSARY

AKUDI THREE ZULU (AKUDI 3Z)
NUKRO FOUR ZULU (NUKRO 4Z)
RUDAK THREE ZULU (RUDAK 3Z)
MILGU TWO ZULU (MILGU 2Z)

FROM SOUTH
 BRNAV EQUIPMENT NECESSARY

EDDI/THF	TEMPELHOF
Radar: Arrivals: Director: Bremen Radar: Bremen Radar: Berlin Director:	123.220 119.700 126.420 121.120
Tower: Ground: ATIS:	119.57 121.95 126.03

Trans level: by ATC
 Trans alt: 5000'
 1. Remain on TWR frequency until passing altitude 2000 ft, then contact Bremen Radar

Valid for flight simulation use only - do not use for real life navigation

