

SID	RWY	ROUTING	GPS/FMS RNAV
<b>BKD 6Q</b> ①	<b>27L/R</b>	To DBR, turn LEFT, 250° bearing, intercept TOF R-256 to D24.8 TOF, turn RIGHT, 336° track to TUBRI, turn LEFT, 299° track to BKD.	<b>(600'+)</b> - DBR - DI271 -DI272 -TUBRI -BKD.
<b>BKD 8R</b>	<b>09L/R</b>	To DIP or <b>600'</b> , whichever is later, turn LEFT, 081° bearing, intercept TOF R-083 to D17.3 TOF, turn LEFT, intercept LWB R-121 inbound to LWB, turn LEFT, LWB R-276 via VIBIS to BKD.	<b>(600'+)</b> - DIP - DI092 - DI098 - LWB - VIBIS - BKD.
<b>GENTI 1Q</b>	<b>27L/R</b>	To DBR, turn LEFT, 250° bearing, intercept TOF R-256 to GENTI.	<b>(600'+)</b> - DBR - DI271 - GENTI.
<b>GENTI 3R</b>	<b>09L/R</b>	To DIP or <b>600'</b> , whichever is later, turn LEFT, 081° bearing to D13 TOF, turn RIGHT, intercept FWE R-264 to GENTI.	<b>(600'+)</b> - DIP - DI091 - DI097 (K260-) - GENTI.
<b>KLF 4R</b> ②		To DIP or <b>600'</b> , whichever is later, turn LEFT, 081° bearing to D13 TOF, turn RIGHT, intercept KLF R-021 inbound to KLF.	<b>(600'+)</b> - DIP - DI091 - DI096 (K260-) - KLF.

**EDDI/THF TEMPELHOF**

**BRUNKENDORF SIX QUEBEC (BKD 6Q)  
BRUNKENDORF EIGHT ROMEO (BKD 8R)  
GENTI ONE QUEBEC (GENTI 1Q)  
GENTI THREE ROMEO (GENTI 3R)  
KLASDORF FOUR ROMEO (KLF 4R)  
RWYS 27L/R, 09L/R  
DEPARTURES**

Radar: Bremen Radar 123.220 Tower: 119.57  
Departure: Bremen Radar 120.620 Ground: 121.95  
Arrival: Bremen Radar 119.700 ATIS: 126.03  
Bremen Radar 126.420

Trans level: by ATC  
1. Remain on TWR frequency until passing altitude 2000 ft, then contact Bremen Radar

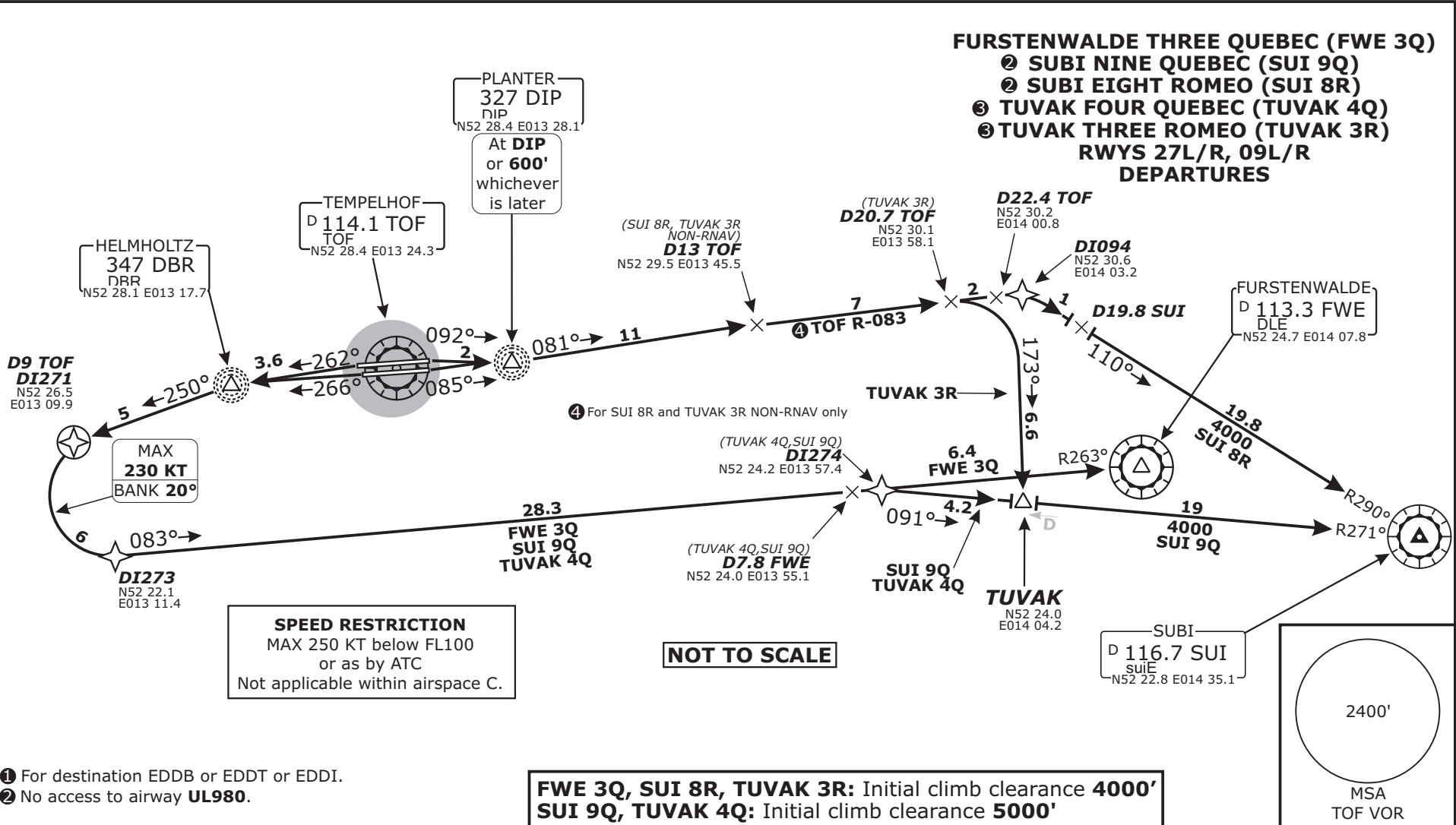
**BERLIN, GERMANY**

SID CHART NO.1  
Revision 14 MAY 08  
Effective 07 JUL 06

**Valid for flight simulation use only - do not use for real life navigation**



Radar: Bremen Radar 123.220 Tower: 119.57  
 Departure: Bremen Radar 120.620 Ground: 121.95  
 Arrival: Bremen Radar 119.700 ATIS: 126.03  
 Bremen Radar 126.420  
 Trans level: by ATC  
 1. Remain on TWR frequency until passing altitude 2000 ft, then contact Bremen Radar



- ① For destination EDDB or EDDT or EDDI.
- ② No access to airway **UL980**.

**FWE 3Q, SUI 8R, TUVAK 3R: Initial climb clearance 4000'**  
**SUI 9Q, TUVAK 4Q: Initial climb clearance 5000'**

SID	RWY	ROUTING	GPS/FMS RNAV
<b>FWE 3Q</b> ①	<b>27L/R</b>	To DBR, turn LEFT, 250° bearing to D9 TOF, turn LEFT, intercept FWE R-263 inbound FWE.	<b>(600'+)</b> - DBR - DI271 - DI273 (K230-) - FWE.
<b>SUI 9Q</b>		To DBR, turn LEFT, 250° bearing to D9 TOF, turn LEFT, intercept FWE R-263 inbound to D7.8 FWE, turn RIGHT, intercept SUI R-271 inbound to SUI.	<b>(600'+)</b> - DBR - DI271 - DI273 (K230-) - DI274 - SUI.
<b>SUI 8R</b>	<b>09L/R</b>	To DIP or <b>600'</b> , whichever is later, turn LEFT, 081° bearing, intercept TOF R-083 to D22.4 TOF, turn RIGHT, intercept SUI R-290 inbound to SUI.	<b>(600'+)</b> - DIP - DI094 - SUI.
<b>TUVAK 4Q</b> ②	<b>27L/R</b>	To DBR, turn LEFT, 250° bearing to D9 TOF, turn LEFT, intercept FWE R-263 inbound to D7.8 FWE, turn RIGHT, intercept SUI R-271 inbound to TUVAK.	<b>(600'+)</b> - DBR - DI271 - DI273 (K230-) - DI274 - TUVAK.
<b>TUVAK 3R</b> ②	<b>09L/R</b>	To DIP or <b>600'</b> , whichever is later, turn LEFT, 081° bearing, intercept TOF R-083 to D20.7 TOF, turn RIGHT, 173° track to TUVAK.	<b>(600'+)</b> - DIP - DI094 - TUVAK.

**Valid for flight simulation use only - do not use for real life navigation**