

RWY 04 RNAV TRANSITION DRESDEN, GERMANY

TRANSITION CHART NO.1
Revision 05 DEC 07
Effective 30 AUG 07

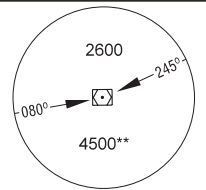
EDDC/DRS DRESDEN

RADAR: MUENCHEN RADAR 133.570
BREMEN RADAR 123.220
ARRIVAL: MUENCHEN RADAR 125.620
124.170

TOWER: 122.920
GROUND: 121.970
APRON: 121.750
ATIS: 118.870

Var 2°E
Elev 755'
THR 04 754'

Trans level: by ATC,
Trans alt: 5000'



MSA 25 NM
DRN DVORDME*

* German Territory only
** 10 NM 3100

ABKIS 04, GARKI 04 HDO 04, OSKAN 04 RIVSA 04 RWY 04 RNAV APPROACH TRANSITIONS

GPS- OR FMS-EQUIPPED AIRCRAFT USE OF
RNAV TRANSITION ONLY WHEN CLEARED BY ATC

GPS/FMS CLEARANCE PHRASEOLOGY

- "Cleared xxx Transition":**
Authorization to fly the lateral part of a GPS/FMS routing, including assigned speeds. Altitudes will be issued by ATC.
- "Cleared xxx Transition and Profile":**
Authorization to fly the GPS/FMS routing including assigned speeds and altitudes.
- "Cleared direct to Waypoint xxx":**
Authorization to fly from the present position to one waypoint or combination of waypoints, including the continuation of the lateral part adjoining the last waypoint, including assigned speeds. Altitudes will be issued by ATC.

When reaching clearance limit OSKAN proceed to RIVSA and hold.
Expect GPS/FMS transition or radar vectoring to final.

CLEARANCE LIMIT OSKAN
N51 27.7 E013 37.7

CLEARANCE LIMIT GARKI
N51 23.1 E014 07.0

EPILA
N51 11.6 E013 37.9

At or above FL80

CLEARANCE LIMIT RIVSA
N51 06.5 E013 22.0

DC423
N51 09.7 E013 35.3

DC457
N51 15.7 E014 09.9

DC456
N51 12.7 E014 05.8

DC455
N51 09.7 E014 01.6

CLEARANCE LIMIT HERMSDORF
D 115.00 HDO

DC453
N51 01.5 E013 50.2

At or above FL80

DRESDEN
D 114.35 DRN
N51 00.9 E013 35.9

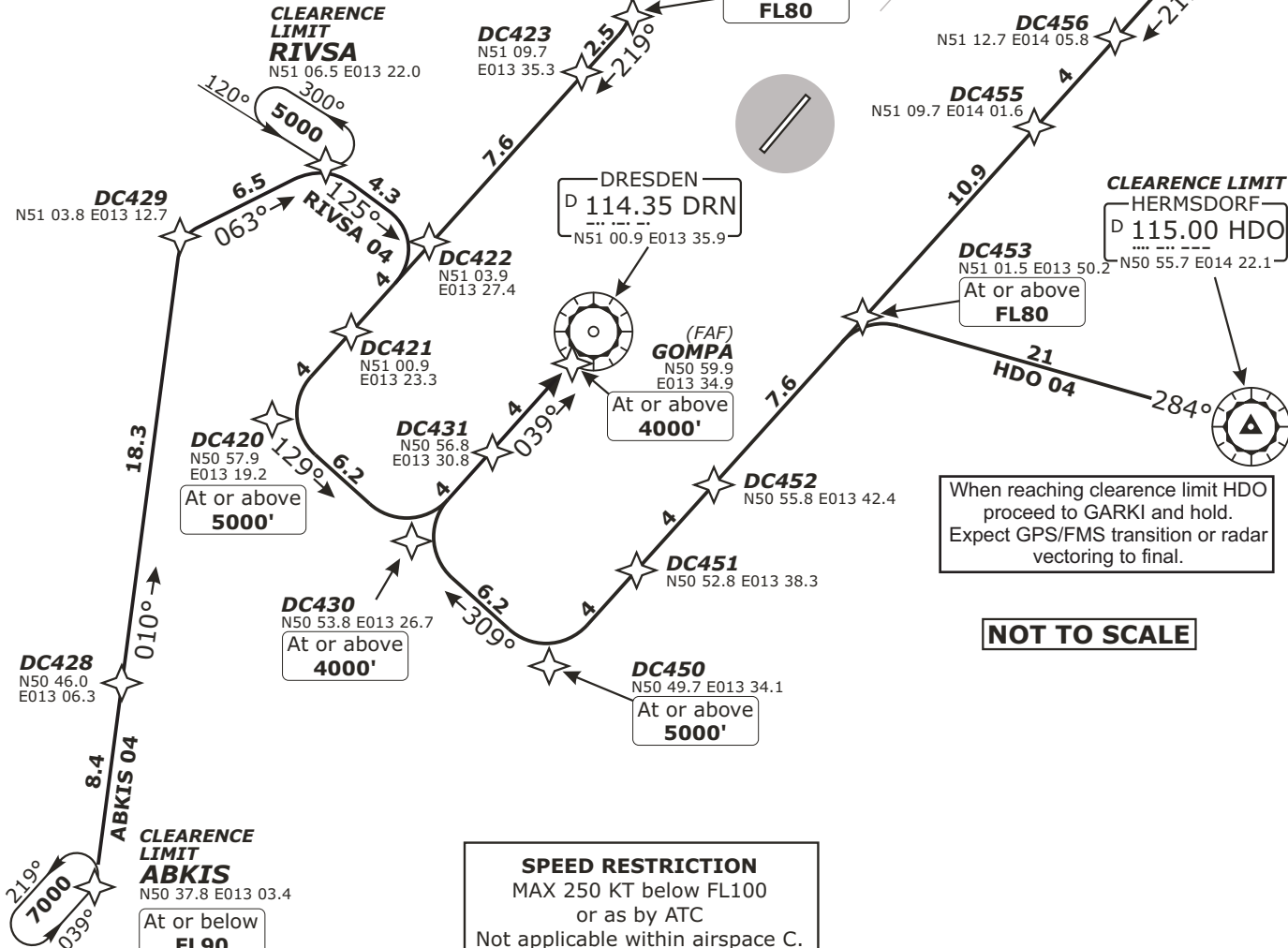
(FAF) **GOMPA**
N50 59.9 E013 34.9

At or above 4000'

When reaching clearance limit HDO proceed to GARKI and hold.
Expect GPS/FMS transition or radar vectoring to final.

NOT TO SCALE

SPEED RESTRICTION
MAX 250 KT below FL100
or as by ATC
Not applicable within airspace C.



TRANSITION	ROUTING
ABKIS 04	ABKIS - DC428 (FL90 -) - DC429 (6000' +) - RIVSA (5000' +) - DC422 (5000' +) - DC420 (5000' +) - DC430 (4000' +) - GOMPA (4000' +)
GARKI 04	GARKI - DC457 - DC453 (FL80 +) - DC450 (5000' +) - DC430 (4000' +) - GOMPA (4000' +).
HDO 04	HDO - DC453 (FL80+) - DC450 (5000'+) - DC430 (4000' +) - GOMPA (4000' +).
OSKAN 04	OSKAN - EPILA (FL80 +) - DC420 (5000' +) - DC430 (4000' +) - GOMPA (4000' +).
RIVSA 04	RIVSA - DC422 - DC420 (5000' +) - DC430 (4000' +) - GOMPA (4000' +).

CHANGES: Clearance limit instructions

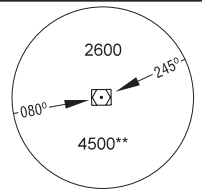
Valid for flight simulation use only - do not use for real life navigation

RADAR: MUENCHEN RADAR 133.570
BREMEN RADAR 123.220
ARRIVAL: MUENCHEN RADAR 125.620
124.170

TOWER: 122.920
GROUND: 121.970
APRON: 121.750
ATIS: 118.870

Var 2°E
Elev 755'
THR 22 700'

Trans level: by ATC,
Trans alt: 5000'



MSA 25 NM
DRN DVORDME*

* German Territory only
** 10 NM 3100

**ABKIS 22, GARKI 22, HDO 22
OSKAN 22, RIVSA 22
RWY 04 RNAV APPROACH TRANSITIONS**

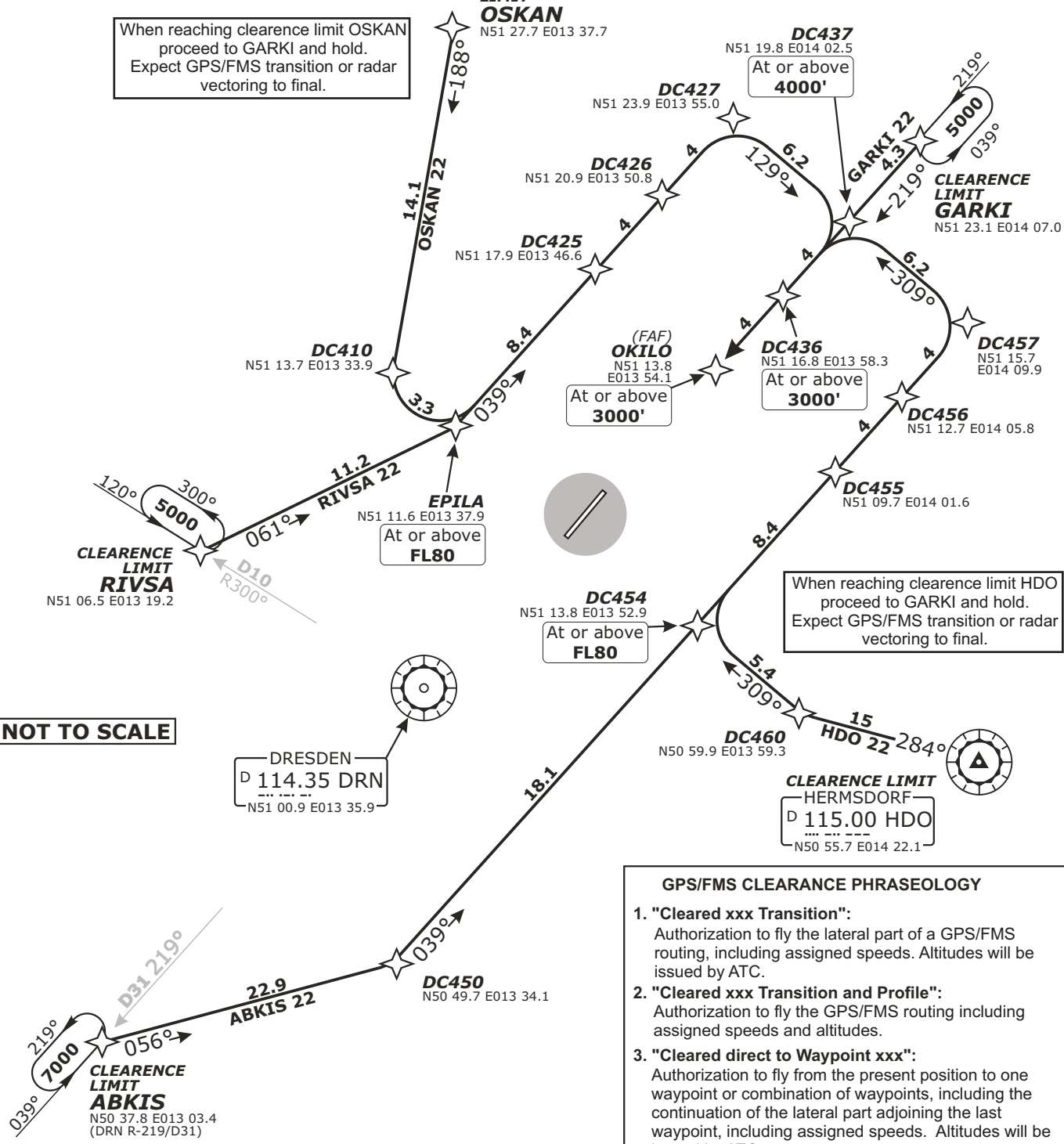
GPS- OR FMS-EQUIPPED AIRCRAFT USE OF
RNAV TRANSITION ONLY WHEN CLEARED BY ATC

SPEED RESTRICTION
MAX 250 KT below FL100
or as by ATC
Not applicable within airspace C.

When reaching clearance limit OSKAN
proceed to GARKI and hold.
Expect GPS/FMS transition or radar
vectoring to final.

When reaching clearance limit HDO
proceed to GARKI and hold.
Expect GPS/FMS transition or radar
vectoring to final.

NOT TO SCALE



- GPS/FMS CLEARANCE PHRASEOLOGY**
- "Cleared xxx Transition":**
Authorization to fly the lateral part of a GPS/FMS routing, including assigned speeds. Altitudes will be issued by ATC.
 - "Cleared xxx Transition and Profile":**
Authorization to fly the GPS/FMS routing including assigned speeds and altitudes.
 - "Cleared direct to Waypoint xxx":**
Authorization to fly from the present position to one waypoint or combination of waypoints, including the continuation of the lateral part adjoining the last waypoint, including assigned speeds. Altitudes will be issued by ATC.

TRANSITION	ROUTING
ABKIS 22	ABKIS - DC450 - DC454 (FL80+) - DC457 - DC437 (4000'+) - DC436 (3000'+) - OKILO (3000'+).
GARKIS 22	GARKI - DC437 (4000' +) - DC436 (3000' +) - OKILO (3000'+).
HDO 22	HDO - DC460 - DC454 (FL80+) - DC457 - DC437 (4000'+) - DC436 (3000'+) - OKILO (3000'+).
OSKAN 22	OSKAN - DC410 - EPILA (FL80+) - DC427 - DC437 (4000'+) - DC436 (3000'+) - OKILO (3000'+).
RIVSA 22	RIVSA - EPILA (FL80+) - DC427 - DC437 (4000'+) - DC436 (3000'+) - OKILO (3000'+).

CHANGES: Clearance limit instructions

Valid for flight simulation use only - do not use for real life navigation