

# EDDC/DRS DRESDEN

SID CHART NO.1  
Revision 27 MAY 09  
Effective 30 AUG 07

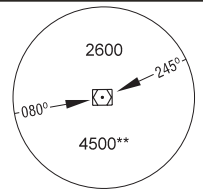
# RWY 04 SID DRESDEN, GERMANY

MUENCHEN RADAR 125.620 124.170  
131.020 129.100

TOWER: 122.920  
GROUND: 121.970  
APRON: 121.750  
ATIS: 118.870

Var 2.4°E  
Elev 754'

Trans level: by ATC,  
Trans alt: 5000'

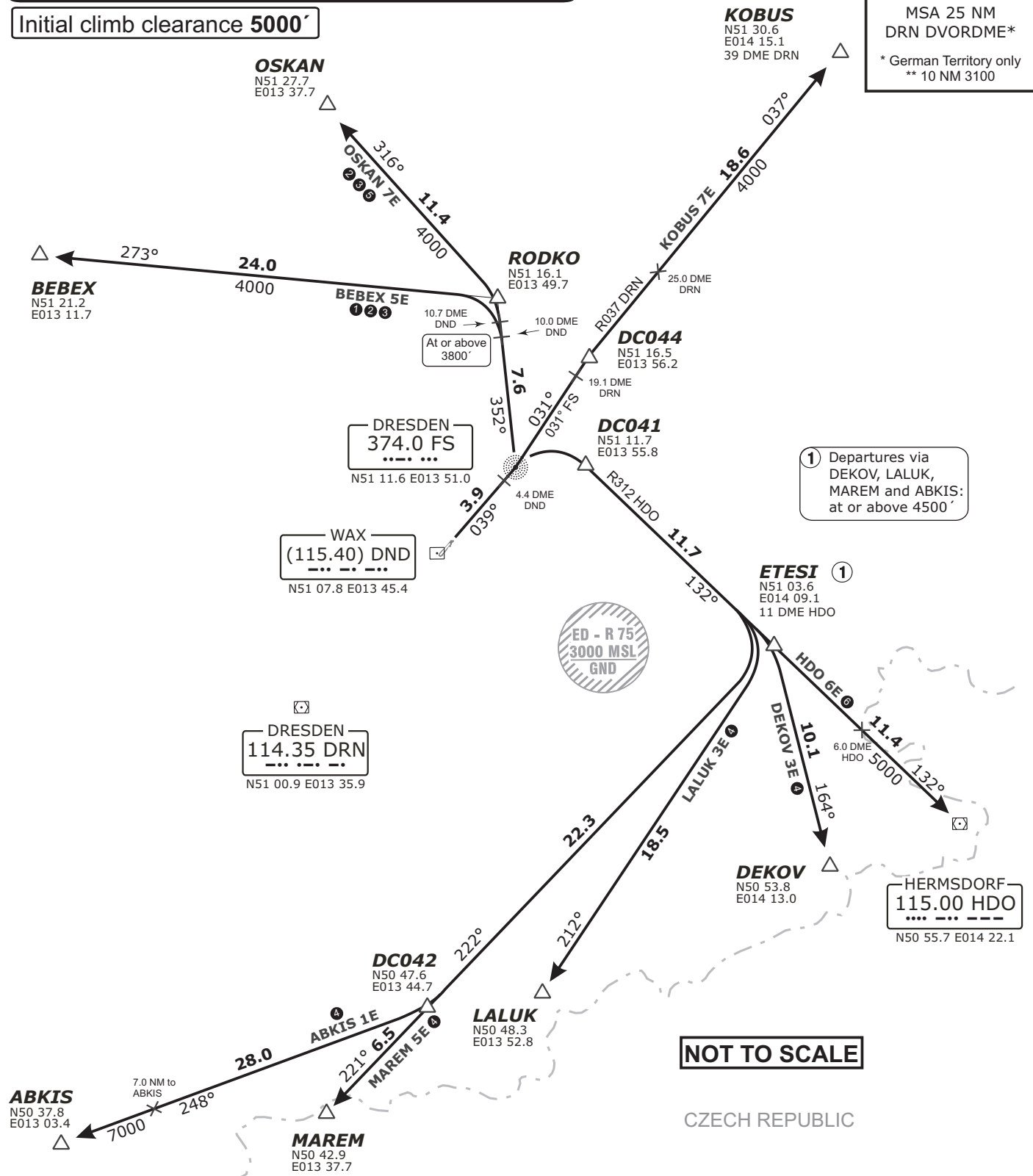


MSA 25 NM  
DRN DVORDME\*

\* German Territory only  
\*\* 10 NM 3100

Contact München Radar immediately after take-off!

Initial climb clearance 5000'



① Departures via DEKOV, LALUK, MAREM and ABKIS: at or above 4500'

NOT TO SCALE

CZECH REPUBLIC

- ① After 10.0 DME DND BRNAV equipment necessary.
- ② PDG 5% (305 ft/NM) or more until passing 3800 due to airspace structure.
- ③ If unable to comply request ALTN route by ATC.
- ④ After ETESI BRNAV equipment necessary. ALTN route by ATC.
- ⑤ After 10.7 DME DND BRNAV equipment necessary.
- ⑥ Only for flights planned to continue via (U)P96-OKX.

CHANGES: Comm. frequencies.

Valid for flight simulation use only - do not use for real life navigation

# EDDC/DRS DRESDEN

SID CHART NO.2  
Revision 27 MAY 09  
Effective 30 AUG 07

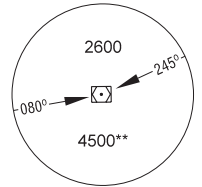
# RWY 22 SID DRESDEN, GERMANY

MUENCHEN RADAR 125.620 124.170  
131.020 129.100

TOWER: 122.920  
GROUND: 121.970  
APRON: 121.750  
ATIS: 118.870

Var 2.4°E  
Elev 754'

Trans level: by ATC,  
Trans alt: 5000'

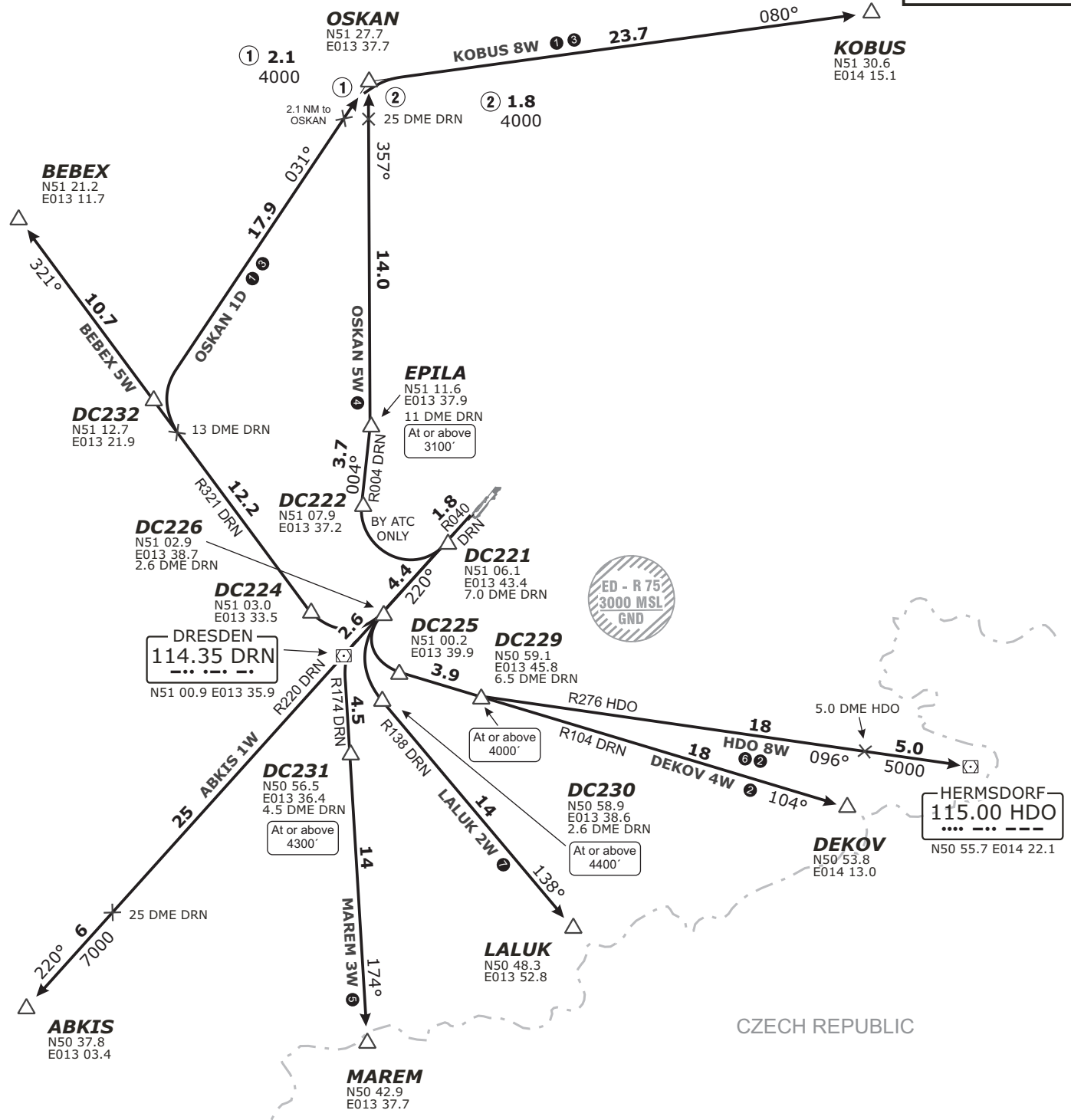


MSA 25 NM  
DRN DVORDME\*

\* German Territory only  
\*\* 10 NM 3100

Contact München Radar immediately after take-off!

Initial climb clearance **5000'**



- ① After 13.0 DME DND BRNAV equipment necessary.
- ② PDG 4% (245 ft/NM) or more until crossing 6.5 DME outbound DRN due to airspace structure.
- ③ If unable to comply request ALTN route by ATC.
- ④ Not to be filed in flight plan. Advised by ATC only.
- ⑤ PDG 4.5% (275 ft/NM) or more until crossing 4.5 DME outbound DRN due to airspace structure.
- ⑥ Only for flights planned to continue via (U)P96-OKX.
- ⑦ PDG 5.8% (350 ft/NM) or more until crossing 4.5 DME outbound DRN due to airspace structure.

Valid for flight simulation use only - do not use for real life navigation

## Initial climb clearance 5000'

**RUNWAY 04**

SID	ROUTING	GPS/FMS RNAV
<b>ABKIS 1E</b>	Direct FS (D5.2 DND), RT, on radial 312 HDO to ETESI, RT, on track 222° to DC042, RT, on track 248° to ABKIS. Cross ETESI at 4500' or above.	(1200'+) - <u>FS</u> - DC041 - ETESI (4500'+) - DC042 - ABKIS
<b>BEBEX 5E</b>	On track 039° inbound FS to D4.4 DND, LT, on track 352° FS to D10.0 DND, LT, on track 273° to BEBEX. Cross D10.0 DND at 3800' or above.	(1200'+) - FS - RODKO (3800'+) - BEBEX
<b>DEKOV 3E</b>	Direct FS (D5.2 DND), RT, on radial 312 HDO to ETESI, RT, on track 164° to DEKOV. Cross ETESI at 4500' or above.	(1200'+) - <u>FS</u> - DC041 - ETESI (4500'+) - DEKOV
<b>HDO 6E</b>	Direct FS (D5.2 DND), RT, on radial 312 HDO to HDO.	(1200'+) - <u>FS</u> - DC041 - HDO
<b>KOBUS 7E</b>	Direct FS (D5.2 DND), LT, on track 031° FS to D19.1 DND, RT, to intercept radial 037 DRN, on radial 037 DRN to KOBUS.	(1200'+) - <u>FS</u> - DC044 - KOBUS
<b>LALUK 3E</b>	Direct FS (D5.2 DND), RT, on radial 312 HDO to ETESI, RT, on track 212° to LALUK. Cross ETESI at 4500' or above.	(1200'+) - <u>FS</u> - DC041 - ETESI (4500'+) - LALUK
<b>MAREM 5E</b>	Direct FS (D5.2 DND), RT, on radial 312 HDO to ETESI, RT, on track 222° to MAREM. Cross ETESI at 4500' or above.	(1200'+) - <u>FS</u> - DC041 - ETESI (4500'+) - MAREM
<b>OSKAN 7E</b>	On track 039° inbound FS to D4.4 DND, LT, on track 352° FS to D10.7 DND, LT, on track 316° to OSKAN. Cross D10.7 DND at 3800' or above.	(1200'+) - FS - RODKO (3800'+) - OSKAN

**RUNWAY 22**

SID	ROUTING	GPS/FMS RNAV
<b>ABKIS 1W</b>	On radial 040 DRN to DRN, on radial 220 DRN to ABKIS	(1200'+) - DRN - ABKIS
<b>BEBEX 5W</b>	On radial 040 DRN to D2.6 DRN, RT, on radial 321 DRN to BEBEX.	(1200'+) - <u>DC226</u> - DC224 - BEBEX
<b>DEKOV 4W</b>	On radial 040 DRN to D2.6 DRN, LT, on radial 104 DRN to DEKOV. Cross D6.5 outbound DRN at 4000' or above.	(1200'+) - <u>DC226</u> - DC225 - DC229 (4000'+) - DEKOV
<b>HDO 8W</b>	On radial 040 DRN to D2.6 DRN, LT, on radial 104 DRN to D6.5 DRN, LT, on radial 276 HDO to HDO. Cross D6.5 outbound DRN at 4000' or above.	(1200'+) - <u>DC226</u> - DC225 - DC229 (4000'+) - HDO
<b>KOBUS 8W</b>	On radial 040 DRN to D2.6 DRN, RT, on radial 321 DRN to D13.0 DRN, RT, on track 031° to OSKAN, RT, on track 080° to KOBUS.	(1200'+) - <u>DC226</u> - DC224 - DC232 - OSKAN - KOBUS
<b>LALUK 2W</b>	On radial 040 DRN to D2.6 DRN, LT, on radial 138 DRN to LALUK. Cross D2.6 outbound DRN at 4400' or above.	(1200'+) - <u>DC226</u> - DC230 (4400'+) - LALUK
<b>MAREM 3W</b>	On radial 040 DRN to D1.0 DRN, LT, on radial 174 DRN to MAREM. Cross D4.5 outbound DRN at 4300' or above.	(1200'+) - DRN - DC231 (4300'+) - MAREM
<b>OSKAN 1D</b>	On radial 040 DRN to D2.6 DRN, RT, on radial 321 DRN to D13.0 DRN, RT, on track 031° to OSKAN.	(1200'+) - <u>DC226</u> - DC224 - DC232 - OSKAN
<b>OSKAN 5W</b>	On radial 040 DRN to D7.0 DRN, RT, on radial 004 DRN to EPILA, LT, on track 357° to OSKAN. Cross EPILA at 3100' or above.	(1200'+) - <u>DC221</u> - DC222 - EPILA (3100'+) - OSKAN

Sample: DC226 fly-over waypoint