

# EDDC/DRS DRESDEN

ILS CHART NO.1  
Revision 23 JUN 09  
Effective 04 JUN 09

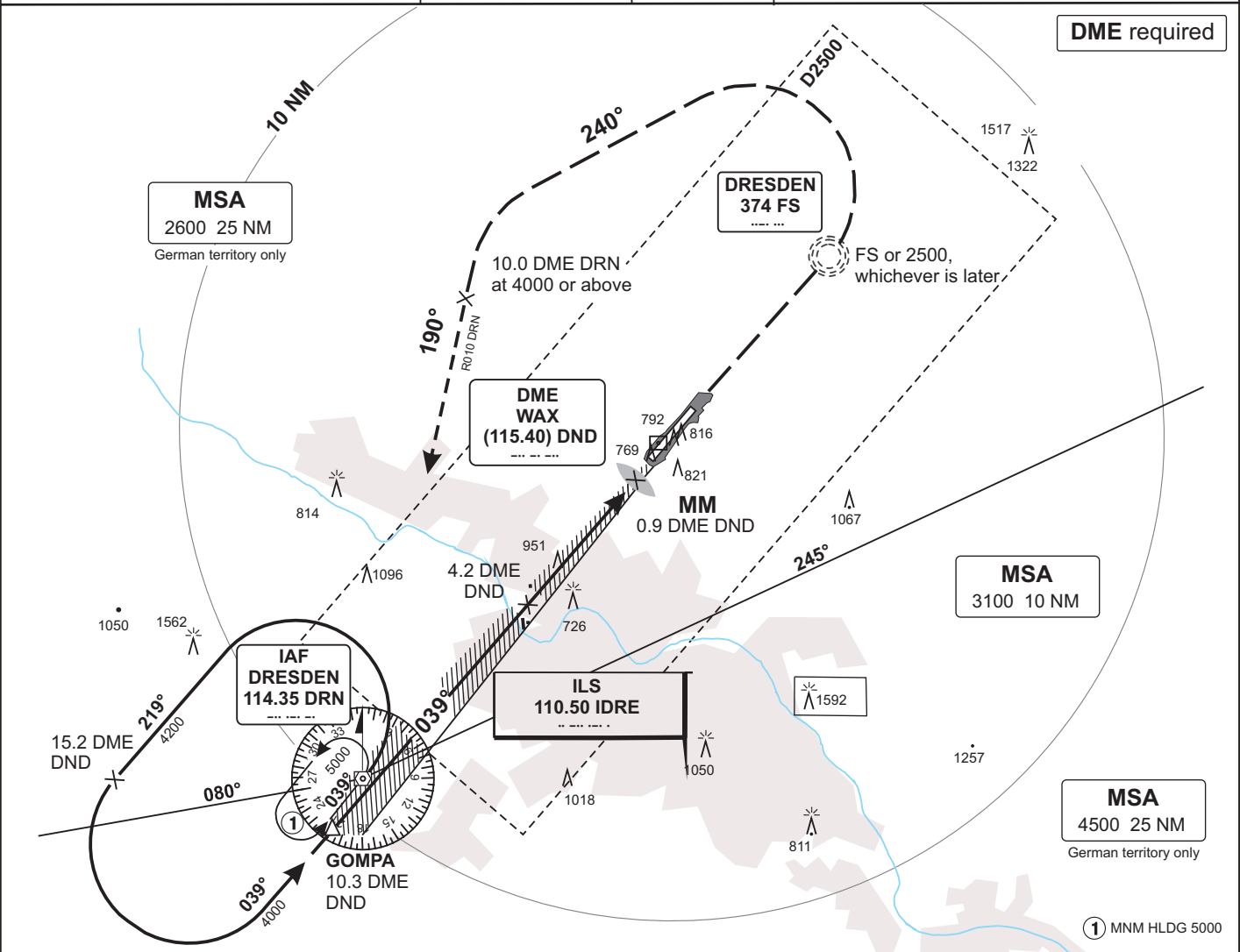
# ILS or LOC RWY 04 ILS DRESDEN, GERMANY

**MUENCHEN RADAR 125.620 124.170**  
**131.020 129.100**

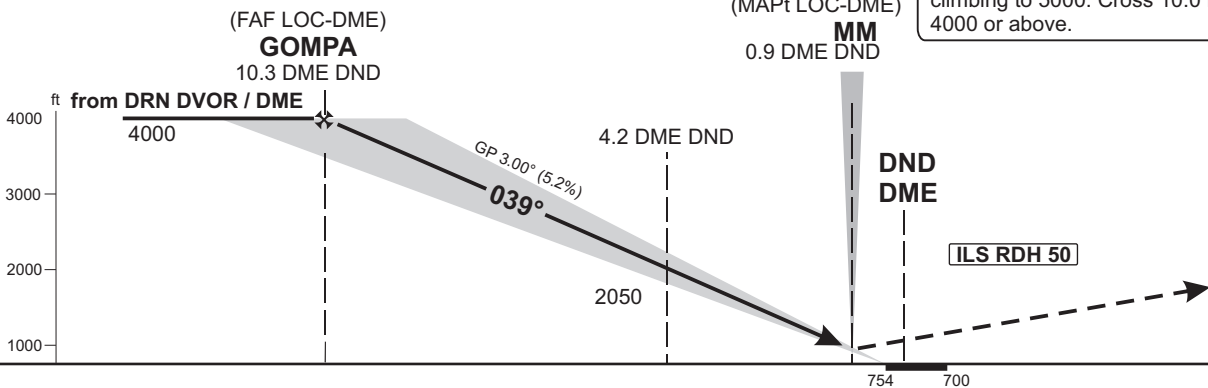
**TOWER: 122.920**  
**GROUND: 121.970**  
**APRON: 121.750**  
**ATIS: 118.870**

Var 2.4°E  
Elev 754'  
THR 04 754'

Trans level: by ATC,  
Trans alt: 5000'



**Missed Approach Procedure**  
Climb straight ahead to FS NDB or 2500, whichever is later, LT on track 240° to intercept R010 DRN to DRN DVOR/DME, climbing to 5000. Cross 10.0 DME DRN at 4000 or above.



OCA (OCH)	A	B	C	D	D <sub>L</sub>
ILS CAT I	898 (144)	908 (154)	918 (164)	928 (174)	
LOC-DME	1200 (450)	1200 (450)	1200 (450)	1200 (450)	
CIRCLING	1230	1250	1460	1460	

DME DND	10	9	8	7	6	5	4	3	2
DIST THR	9.7	8.7	7.7	6.7	5.7	4.7	3.7	2.7	1.7
ALTITUDE	3900	3580	3260	2940	2620	2310	1990	1670	1350

LOC - DME: Timing not authorized for defining the MAPt.

GS	kt	80	100	120	140	160	180
4.2 DME DND - THR (3.9 NM)	MIN:SEC	2:56	2:20	1:57	1:40	1:28	1:18
Rate of descent (5.2%)	ft/MIN	420	530	640	740	850	960

CHANGES: Comm. frequencies; nav aids; OCA(H) values revised.

Valid for flight simulation use only - do not use for real life navigation

# EDDC/DRS DRESDEN

ILS CHART NO.2  
Revision 23 JUN 09  
Effective 30 AUG 07

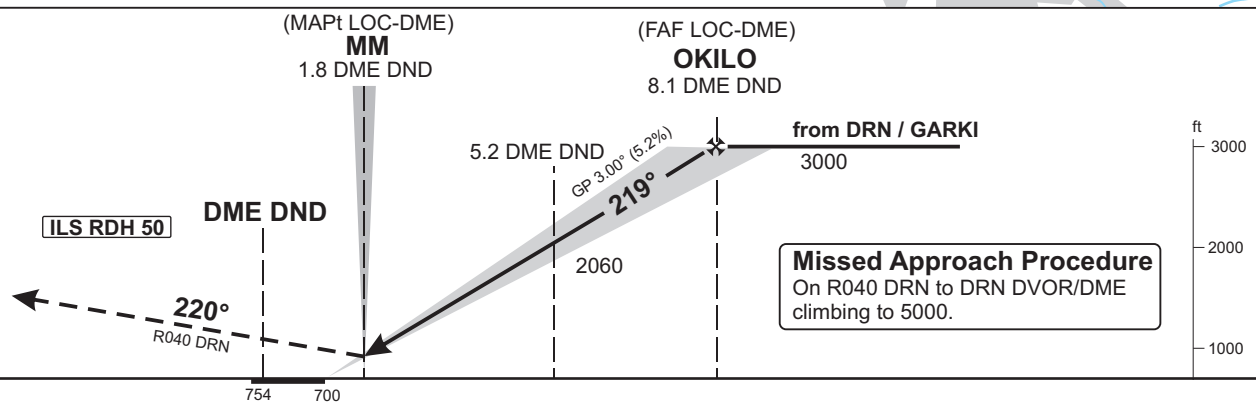
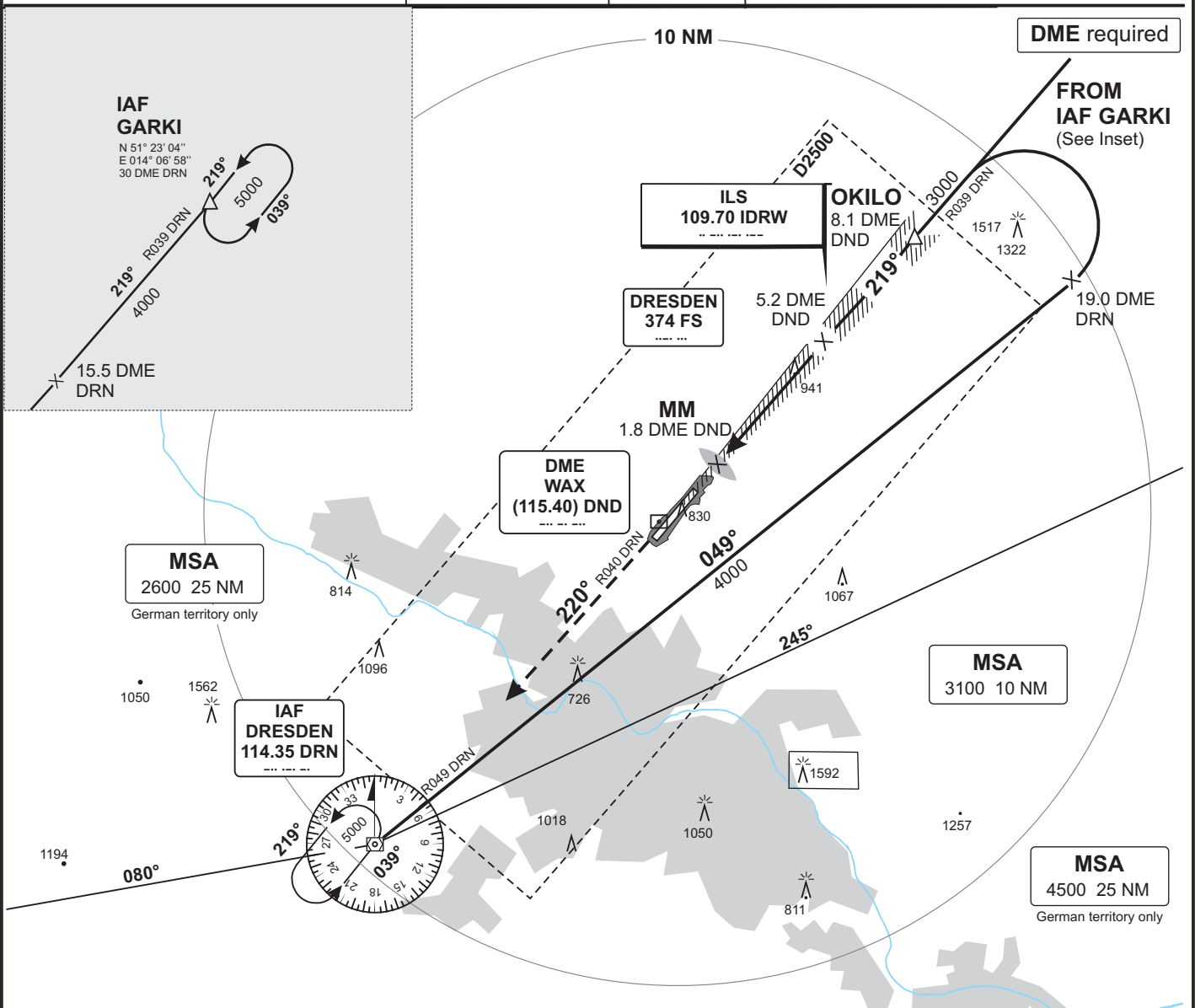
# ILS or LOC RWY 22 ILS DRESDEN, GERMANY

**MUENCHEN RADAR 125.620 124.170**  
**131.020 129.100**

**TOWER: 122.920**  
**GROUND: 121.970**  
**APRON: 121.750**  
**ATIS: 118.870**

Var 2.4°E  
Elev 754'  
THR 22 700'

Trans level: by ATC,  
Trans alt: 5000'



OCA (OCH)	A	B	C	D	D <sub>L</sub>
ILS CAT I	846 (146)	856 (156)	866 (166)	876 (176)	
ILS CAT II	757 (57)	773 (73)	787 (87)	800 (100)	
LOC-DME	1230 (530)	1230 (530)	1230 (530)	1230 (530)	
CIRCLING	1230	1250	1460	1460	

DME DND	2	3	4	5	6	7	8
DIST THR	0.9	1.9	2.9	3.9	4.9	5.9	6.9
ALTITUDE	1040	1360	1680	2000	2320	2630	2950

LOC - DME: Timing not authorized for defining the MAPt.

GS	kt	80	100	120	140	160	180
5.2 DME DND - THR (4.1 NM)	MIN:SEC	3:05	2:28	2:03	1:45	1:32	1:22
Rate of descent (5.2%)	ft/MIN	420	530	640	740	850	960

CAT IIIA & CAT IIIB (MNM RVR 75 m) approved.

Valid for flight simulation use only - do not use for real life navigation

CHANGES: Comm. frequencies; nav aids; OCA(H) values revised.