



Valid for flight simulation use only - do not use for real life navigation

TRANS CHART NO.2  
Revision 08 JUN 08  
Effective 03 JUL 08

**RNAV TRANSITION**

# EDDB/SXF SCHONEFELD

# BERLIN, GERMANY

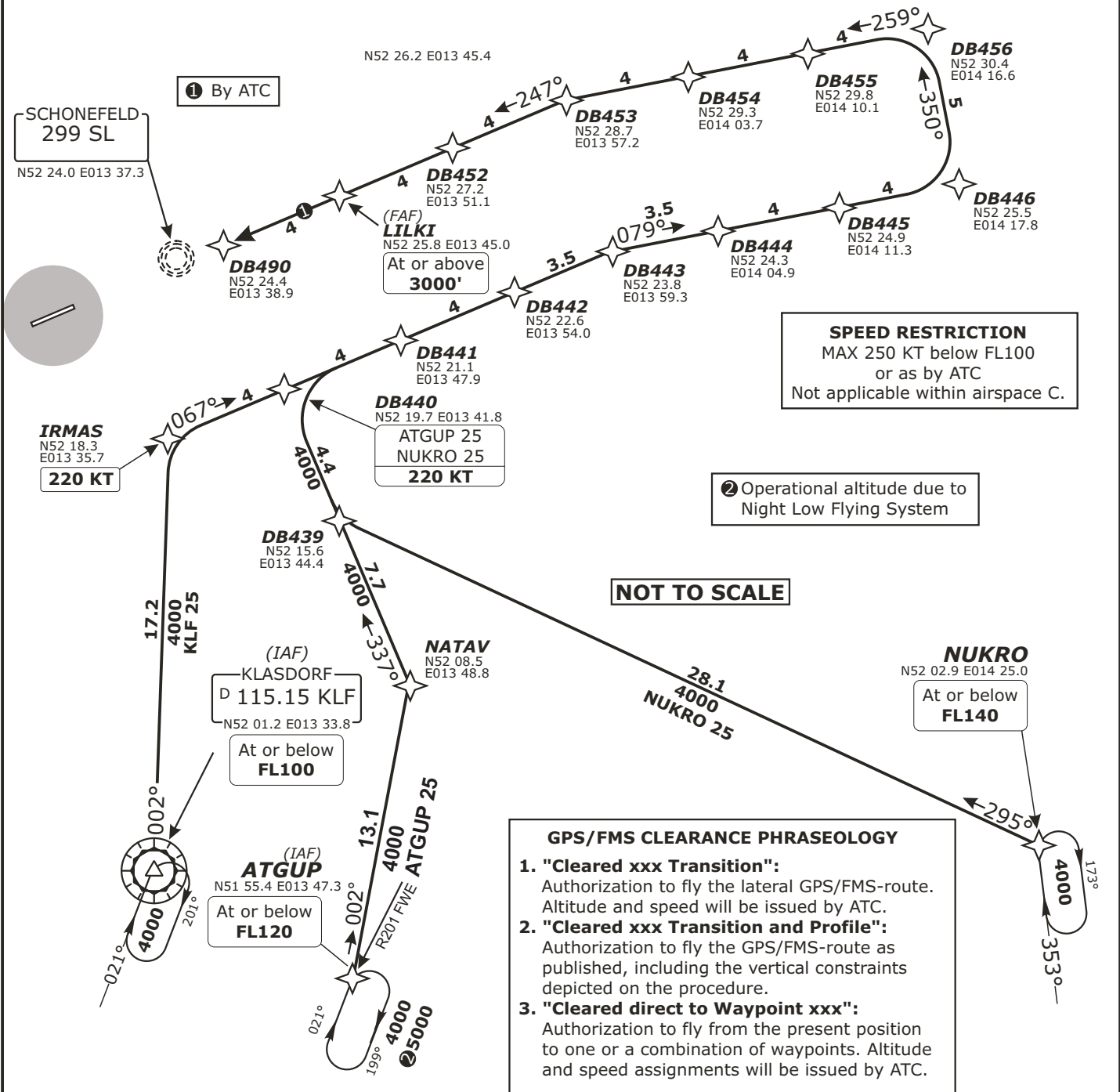
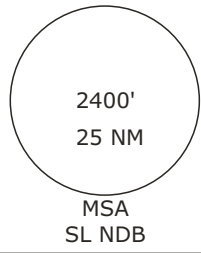
**Radar:** Bremen Radar 123.220  
**Arrival:** Bremen Radar 119.700  
          Bremen Radar 126.420  
**Director:** Berlin Director 121.120

**Tower:** 120.02   **ATIS:** 124.95  
          127.87  
**Ground:** 121.60

Alt Set: hPa (IN on request)  
Trans level: by ATC Trans alt: 5000'  
1. On downwind expect vectors to final.  
2. Speed restrictions on Transition (even without profile) are always mandatory, unless cancelled by ATC.

## ATGUP 25, KLF 25, NUKRO 25 RUNWAY 25 RNAV APPROACH TRANSITIONS

GPS- OR FMS-EQUIPPED AIRCRAFT  
USE OF RNAV TRANSITION ONLY WHEN CLEARED BY ATC



TRANSITION	ROUTING
<b>ATGUP 25</b>	ATGUP (FL120-) - NATAV - DB440 (K220) - DB443 - DB446 - DB456 - DB453 - LILKI (3000'+).
<b>KLF 25</b>	KLF (FL100-) - IRMAS (K220) - DB443 - DB446 - DB456 - DB453 - LILKI (3000'+).
<b>NUKRO 25</b>	NUKRO (FL140-) - DB439 - DB440 (K220) - DB443 - DB446 - DB456 - DB453 - LILKI (3000'+).

CHANGES: Runway designator