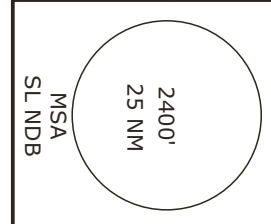
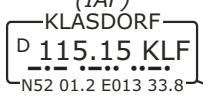
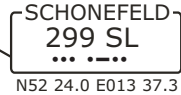
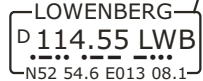
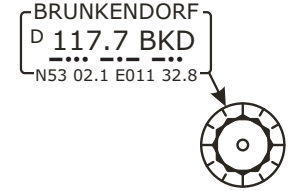


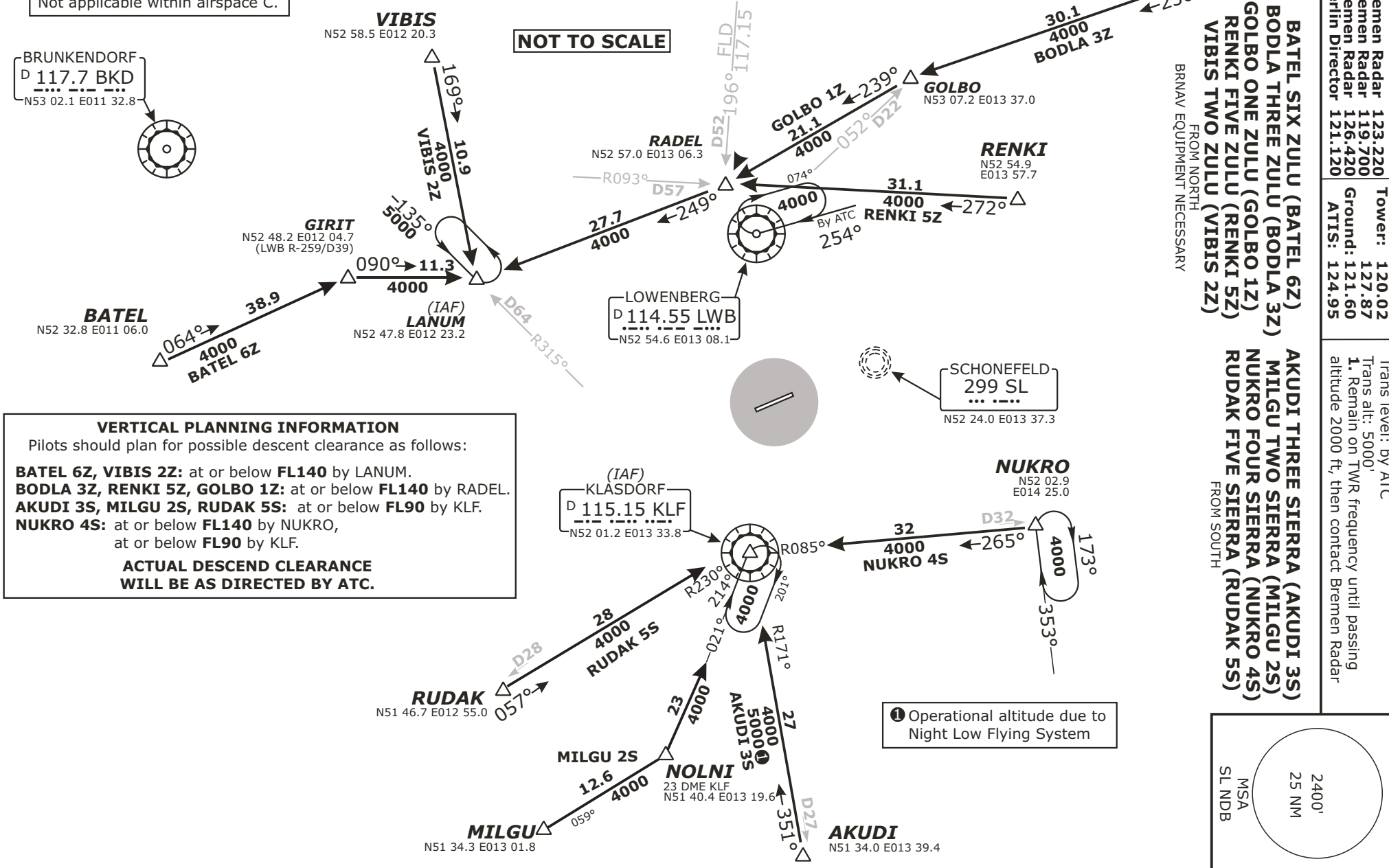
RWY 07 ARRIVALS

SPEED RESTRICTION
 MAX 250 KT below FL100
 or as by ATC
 Not applicable within airspace C.

NOT TO SCALE



VERTICAL PLANNING INFORMATION
 Pilots should plan for possible descent clearance as follows:
BATEL 6Z, VIBIS 2Z: at or below **FL140** by LANUM.
BODLA 3Z, RENKI 5Z, GOLBO 1Z: at or below **FL140** by RADEL.
AKUDI 3S, MILGU 2S, RUDAK 5S: at or below **FL90** by KLF.
NUKRO 4S: at or below **FL140** by NUKRO,
 at or below **FL90** by KLF.
ACTUAL DESCEND CLEARANCE WILL BE AS DIRECTED BY ATC.



Radar:	Bremen Radar 123.220	Tower:	120.02	Trans level:	by ATC
Arrival:	Bremen Radar 119.700	Ground:	127.87	1. Remain on TWR frequency	until passing
Director:	Bremen Radar 126.420	ATIS:	124.95	altitude 2000 ft,	then contact Bremen Radar
	Berlin Director 121.120				

BATEL SIX ZULU (BATEL 6Z)
BODLA THREE ZULU (BODLA 3Z)
GOLBO ONE ZULU (GOLBO 1Z)
RENKI FIVE ZULU (RENKI 5Z)
VIBIS TWO ZULU (VIBIS 2Z)

FROM NORTH
 BRNAV EQUIPMENT NECESSARY

AKUDI THREE SIERRA (AKUDI 3S)
MILGU TWO SIERRA (MILGU 2S)
NUKRO FOUR SIERRA (NUKRO 4S)
RUDAK FIVE SIERRA (RUDAK 5S)

FROM SOUTH

EDDB/SXF SCHONEFELD

STAR CHART NO. 1
 Revision 08 JUN 08
 Effective 03 JUL 08

BERLIN, GERMANY STAR
Arrival Routes Rwy 07

CHANGES: Runway designator

Thomas Schulz

EDDB/SXF SCHONEFELD
 STAR CHART NO. 2
 Revision 08 JUN 08
 Effective 03 JUL 08
BERLIN, GERMANY STAR
Arrival Routes Rwy 25

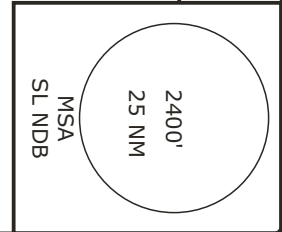
Radar: Arrival: Director: Berlin Director	Bremen Radar 123.220 Bremen Radar 119.700 Bremen Radar 126.420 Berlin Director 121.120	Tower: Ground: ATIS:	120.02 127.87 121.60 124.95	Trans level: by ATC Trans alti: 5000' 1. Remain on TWR frequency until passing altitude 2000 ft, then contact Bremen Radar
---	---	----------------------------	--------------------------------------	--

BATEL SIX VICTOR (BATEL 6V)
BODLA TWO VICTOR (BODLA 2V)
GOLBO ONE VICTOR (GOLBO 1V)
RENKI FOUR VICTOR (RENKI 4V)
VIBIS THREE VICTOR (VIBIS 3V)

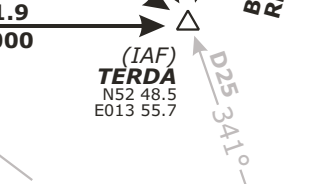
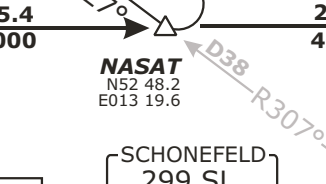
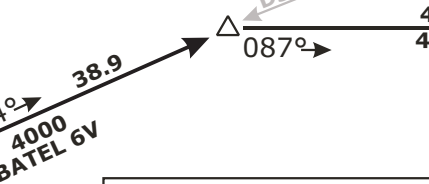
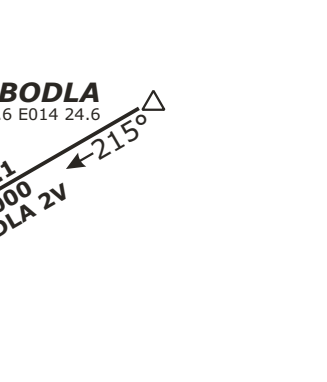
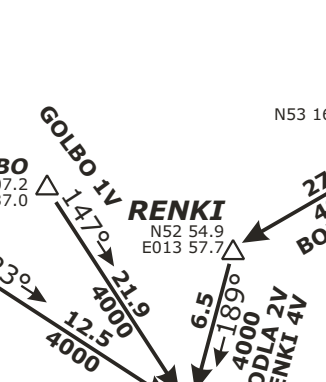
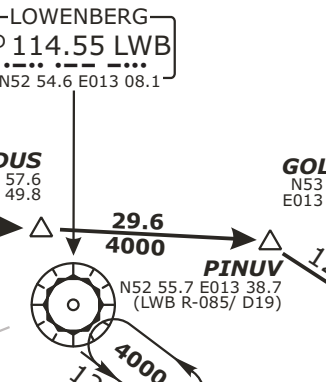
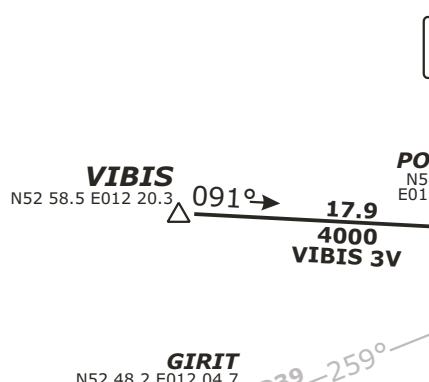
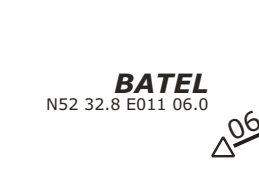
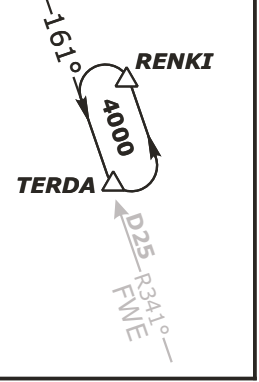
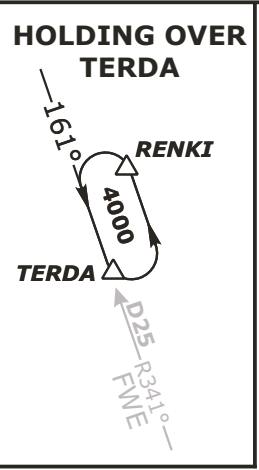
FROM NORTH
 BRNAV EQUIPMENT NECESSARY

AKUDI FOUR VICTOR (AKUDI 4V)
NUKRO THREE VICTOR (NUKRO 3V)
RUDAK FIVE VICTOR (RUDAK 5V)
MILGU THREE VICTOR (MILGU 3V)

FROM SOUTH
 BRNAV equipment necessary.



RWY 25 ARRIVALS



SPEED RESTRICTION
 MAX 250 KT below FL100
 or as by ATC
 Not applicable within airspace C.

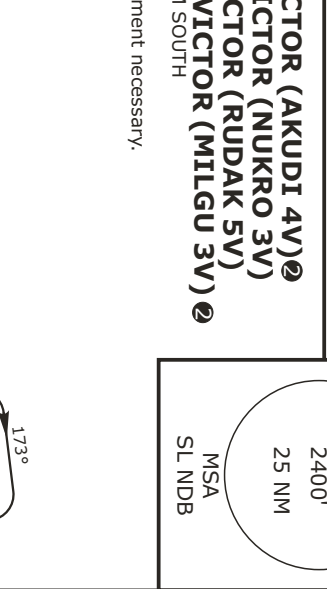
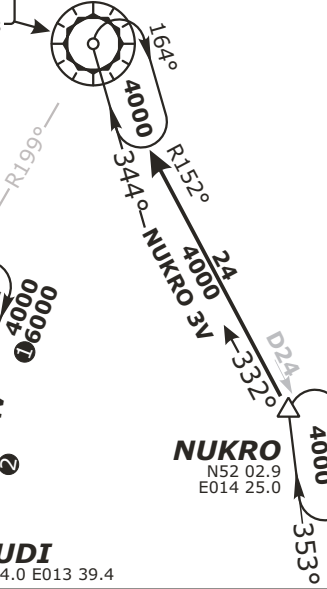
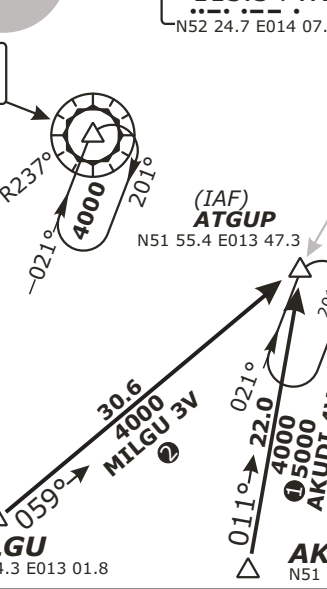
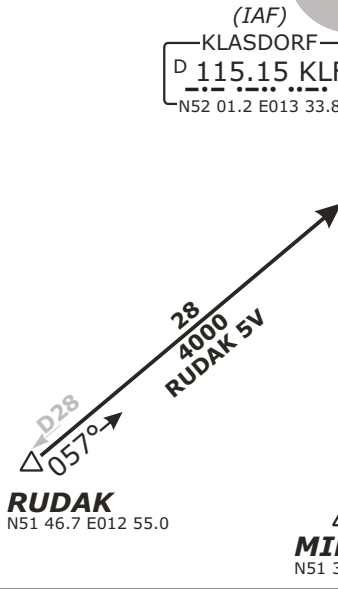


Operational altitude due to Night Low Flying System

VERTICAL PLANNING INFORMATION
 Pilots should plan for possible descent clearance as follows:

BATEL 6V:
 at or below **FL100** by NASAT & TERDA.
BODLA 2V, RENKI 4V, GOLBO 1V, VIBIS 3V:
 at or below **FL100** by TERDA.
AKUDI 4V, MILGU 3V:
 at or below **FL120** by ATGUP.
NUKRO 3V:
 at or below **FL140** by NUKRO,
 at or below **FL70** by FWE.
RUDAK 5V:
 at or below **FL100** by KLF.

ACTUAL DESCEND CLEARANCE WILL BE AS DIRECTED BY ATC.



Valid for flight simulation use only - do not use for real life navigation

http://www.vacc-sag.org/