

- ① After D22 FWE BRNAV equipment necessary.
- ② After D48 FWE BRNAV equipment necessary.

BELID 4S, BELID 2X, BKD 5S: Initial climb clearance 4000'
BKD 6X: Initial climb clearance 5000'

SID	RWY	ROUTING	GPS/FMS RNAV
BELID 4S ①	07	Climb on runway track to 600' , to SL, turn RIGHT, intercept FWE R-266 inbound to D14 FWE, turn RIGHT, intercept FWE R-252 to D22 FWE, turn RIGHT, 261° track to BELID.	(600'+) - SL - DB071 - DB076 (K220-) - DB077 - BELID.
BELID 2X	25	Climb on runway track to 600' , to MW, 249° bearing to D10.9 SDD, turn RIGHT, intercept FWE R-257 to BELID.	(600'+) - MW - DB252 - BELID.
BKD 5S	07	Climb on runway track to 600' , to SL, turn RIGHT, intercept FWE R-266 inbound to D9 FWE, turn LEFT, 355° track to FWE 11 DME, turn LEFT, intercept LWB R-121 inbound to LWB, turn LEFT, LWB R-276 via VIBIS to BKD.	(600'+) - SL - DB073 - DB074 - LWB - VIBIS - BKD.
BKD 6X ②	25	Climb on runway track to 600' , to MW, 249° bearing to D10.9 SDD, turn RIGHT, intercept FWE R-257 to D48 FWE, turn RIGHT, 336° track to TUBRI, turn LEFT, 299° track to BKD.	(600'+) - MW - DB252 - DB253 - TURBI - BKD.

EDDB/SXF

SID CHART NO.1
Revision 08 JUN 08
Effective 03 JUL 08

BERLIN, GERMANY

Radar: 123.220
Departure: Bremen Radar 120.620
Arrival: Bremen Radar 119.700
Bremen Radar 126.420

Tower: 120.02
127.87
Ground: 121.60
ATIS: 124.95

Trans level: by ATC Trans alt: 5000'
1. Remain on TWR frequency until passing altitude 2000 ft, then contact Bremen Radar

Valid for flight simulation use only - do not use for real life navigation

**RAKIT TWO SIERRA (RAKIT 2S)
RAKIT FIVE X-RAY (RAKIT 5X)
TUVAK TWO SIERRA (TUVAK 2S)
TUVAK THREE X-RAY (TUVAK 3X)
RWYS 07, 25 DEPARTURES**

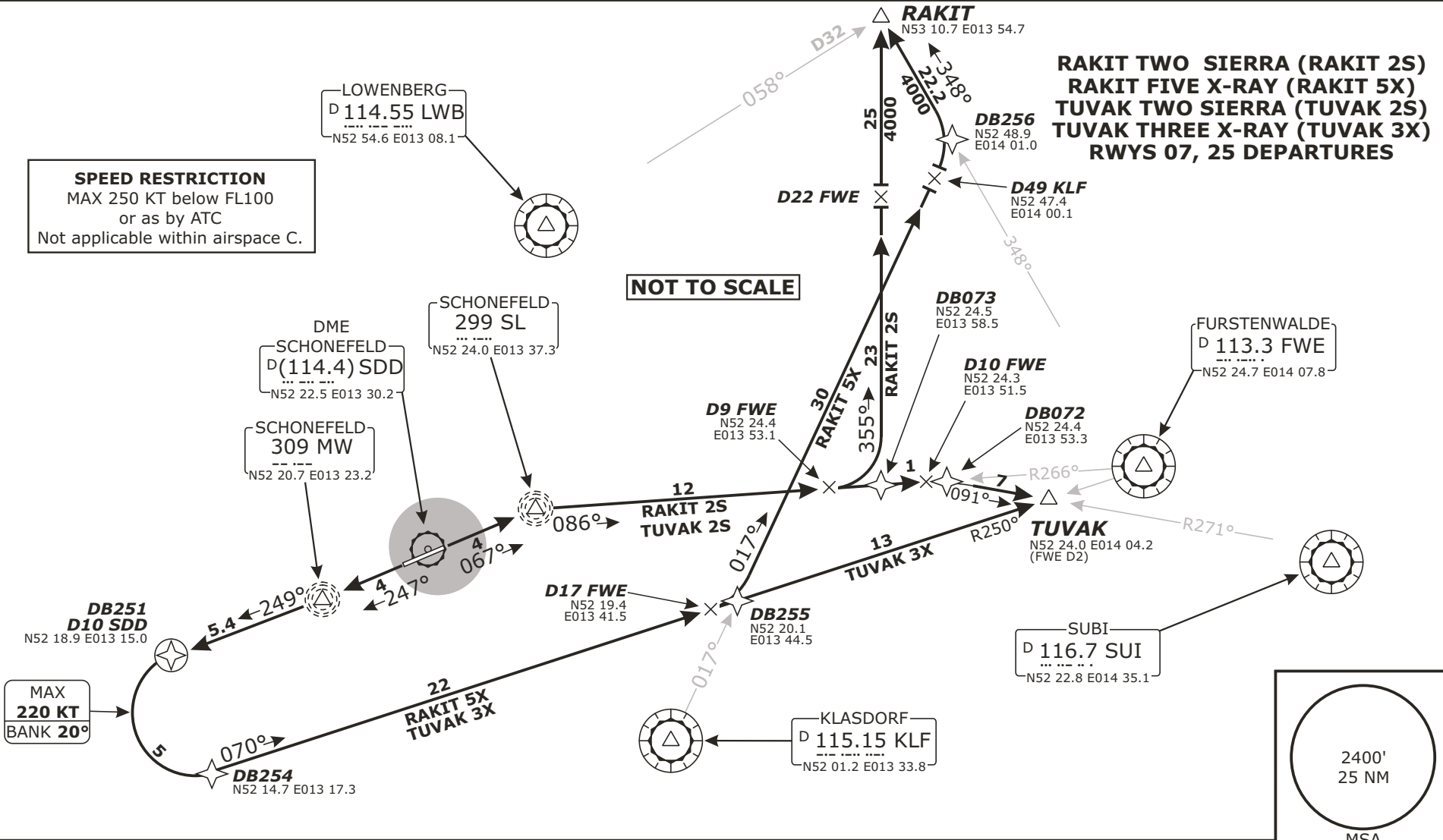
Radar:
Departure: Bremen Radar 123.220
Arrival: Bremen Radar 120.620
Bremen Radar 119.700
Bremen Radar 126.420

Tower: 120.02
Ground: 127.87
ATIS: 124.95

Trans level: by ATC Trans alt: 5000'
1. Remain on TWR frequency until passing altitude 2000 ft, then contact Bremen Radar

SPEED RESTRICTION
MAX 250 KT below FL100
or as by ATC
Not applicable within airspace C.

NOT TO SCALE



Initial climb clearance **4000'**

SID	RWY	ROUTING	GPS/FMS RNAV
RAKIT 2S	07	Climb on runway track to 600' , to SL, turn RIGHT, intercept FWE R-266 inbound to D9 FWE, turn LEFT, 355° track to RAKIT.	(600'+) - SL - DB073 - RAKIT.
RAKIT 5X	25	Climb on runway track to 600' , to MW, 249° bearing to D10 SDD, turn LEFT, intercept FWE R-250 inbound to D17 FWE, turn LEFT, intercept KLF R-017 to D49 KLF, turn LEFT, intercept FWE R-348 to RAKIT.	(600'+) - MW - DB251 - DB254 (K220-) - DB255 - DB256 - RAKIT.
TUVAK 2S	07	Climb on runway track to 600' , to SL, turn RIGHT, intercept FWE R-266 inbound to D10 FWE, turn RIGHT, intercept SUI R-271 inbound to TUVAK.	(600'+) - SL - DB072 - TUVAK.
TUVAK 3X	25	Climb on runway track to 600' , to MW, 249° bearing to D10 SDD, turn LEFT, Intercept FWE R-250 inbound to TUVAK.	(600'+) - MW - DB251 - DB254 (K220-) - TUVAK.

Valid for flight simulation use only - do not use for real life navigation

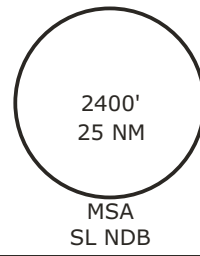
EDDB/SXF

BERLIN, GERMANY

Radar: Bremen Radar 123.220
Departure: Bremen Radar 120.620
Arrival: Bremen Radar 119.700
Bremen Radar 126.420

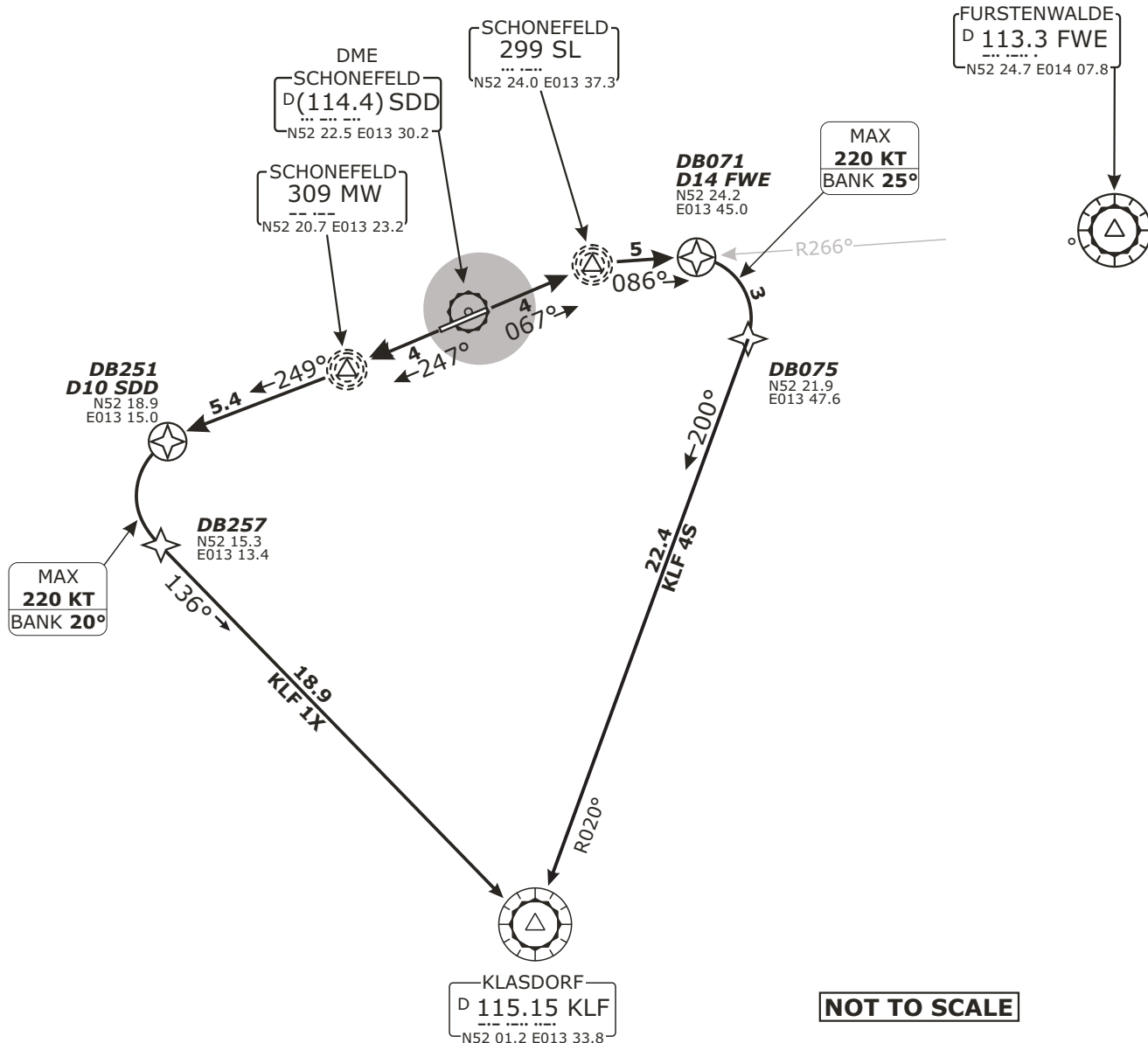
Tower: 120.02
127.87
Ground: 121.60
ATIS: 124.95

Trans level: by ATC Trans alt: 5000'
1. Remain on TWR frequency until passing altitude 2000 ft, then contact Bremen Radar



**KLASDORF THREE X-RAY (KLF 1X)
KLASDORF FOUR SIERRA (KLF 4S)
RWYS 07, 25 DEPARTURES**

FOR DESTINATION EDDT OR EDDI AND TRAINING FLIGHTS



SPEED RESTRICTION
MAX 250 KT below FL100
or as by ATC
Not applicable within airspace C.

Initial climb clearance **4000'**

SID	RWY	ROUTING	GPS/FMS RNAV
KLF 1X	25	Climb on runway track to 600' , to MW, 249° bearing to D10 SDD, turn LEFT, intercept KLF R-316 inbound to KLF.	(600'+) - MW - DB251 - DB257 (K220-) - KLF.
KLF 4S	07	Climb on runway track to 600' , to SL, turn RIGHT, intercept FWE R-226 inbound to D14 FWE, turn RIGHT, intercept KLF R-020 inbound to KLF.	(600'+) - SL - DB071 - DB075 - KLF.

Valid for flight simulation use only - do not use for real life navigation