

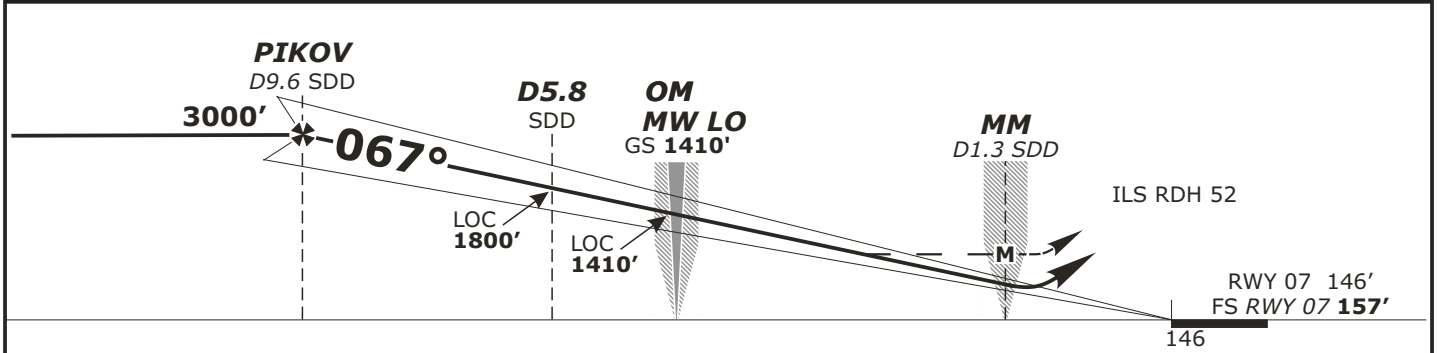
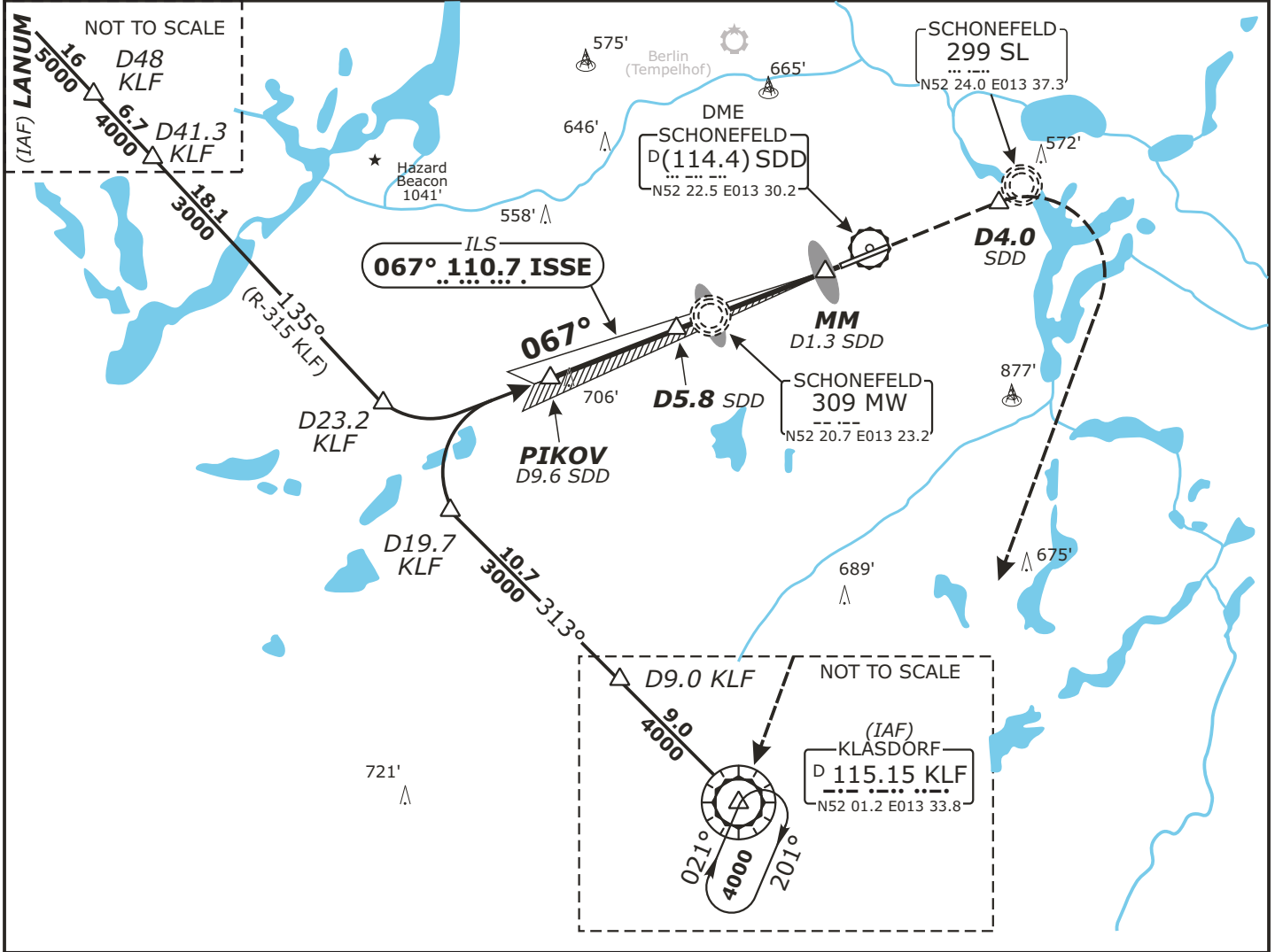
EDDB/SXF SCHONEFELD

APP CHART NO.1
Revision 08 JUN 08
Effective 03 JUL 08

BERLIN, GERMANY ILS or LOC Rwy 07

Valid for flight simulation use only - do not use for real life navigation

Radar: Bremen Radar 123.220 Arrival: Bremen Radar 119.700 Bremen Radar 126.420 Director: Berlin Director 121.120		Tower: 120.02 127.87 Ground: 121.60		ATIS: 124.95	
LOC ISSE 110.7	Final Apch Crs 067°	GS LOM 1410' (1253')	ILS DA(H) Refer to Minimums		Apt Elev 157' FS: RWY 157' RWY 146'
MISSED APCH: Climb on rwy track to MAX 3000'. At D4.0 East of SDD DME turn RIGHT to KLF VOR and continue climb to 4000'.					<div style="border: 1px solid black; border-radius: 50%; width: 100px; height: 100px; display: flex; align-items: center; justify-content: center;"> <div style="text-align: center;"> <p>2400'</p> <p>25 NM</p> </div> </div> <p>MSA SL Lctr</p>
Alt Set: hPa (IN on req) LOC: DME REQUIRED.		Rwy Elev: 5 hPa	Trans level: By ATC	Trans alt: 5000'	



OCA (OCH)	A	B	C	D	D _L
ILS CAT I	284 (138)	294 (148)	304 (158)	314 (268)	
ILS CAT II	196 (50)	212 (66)	225 (79)	238 (92)	
LOC-DME	600 (450)	600 (450)	600 (450)	600 (450)	

DME SDD	9	8	7	6	5	4	3
DIST THR	8.2	7.2	6.2	5.2	4.2	3.2	2.2
ALTITUDE	2810	2490	2170	1860	1540	1220	900

LOC-DME: Timing not authorized for defining the MAPt.

GS	kt	80	100	120	140	160	180
OM - THR (3.8 NM)	MIN:SEC	2:51	2:17	1:54	1:38	1:26	1:16
Rate of descent (5.2%)	ft/MIN	420	530	640	740	850	960

CHANGES: Runway designator

CAT IIIA & CAT IIIB (MNM RVR 125 m) Approved.

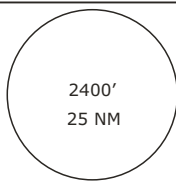
Thomas Schulz

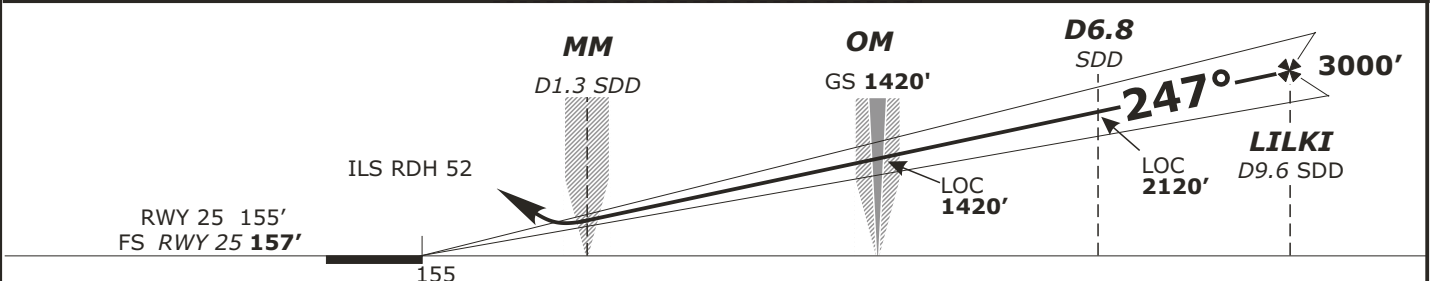
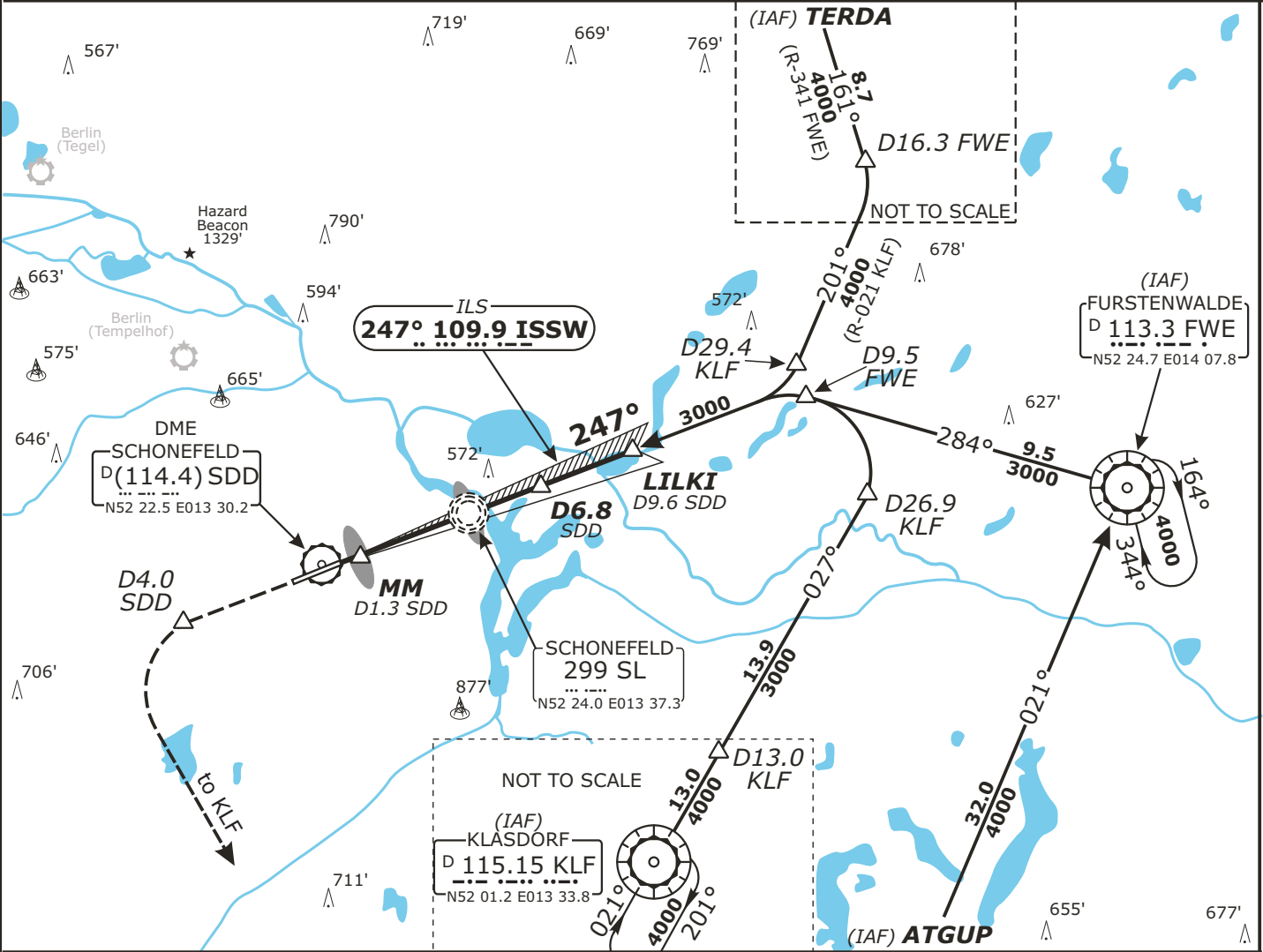
<http://www.vacc-sag.org/>

EDDB/SXF SCHONEFELD

APP CHART NO.2
Revision 08 JUN 08
Effective 03 JUL 08

BERLIN, GERMANY ILS or LOC Rwy 25

Radar: Bremen Radar 123.220 Arrival: Bremen Radar 119.700 Bremen Radar 126.420 Director: Berlin Director 121.120		Tower: 120.02 127.87 Ground: 121.60		ATIS: 124.95	
LOC ISSW 109.9	Final Apch Crs 247°	GS LOM 1420' (1263')	ILS DA(H) Refer to Minimums	Apt Elev 157' FS: RWY 157' RWY 155'	 MSA SL Lctr
MISSED APCH: Climb on rwy track to MAX 3000'. At D4.0 West of SDD DME turn LEFT to KLF VOR and continue climb to 4000'.					
Alt Set: hPa (IN on req) LOC: DME REQUIRED.		Rwy Elev: 6 hPa	Trans level: By ATC	Trans alt: 5000'	



OCA (OCH)	A	B	C	D	D _L
ILS CAT I	292 (137)	302 (147)	312 (157)	322 (167)	328 (173)
ILS CAT II	204 (49)	220 (65)	233 (78)	247 (92)	
LOC-DME	560 (410)	560 (410)	560 (410)	560 (410)	

DME SDD	2	3	4	5	6	7	8	9
DIST THR	1.2	2.2	3.2	4.2	5.2	6.2	7.2	8.2
ALTITUDE	590	910	1230	1550	1870	2190	2500	2820

LOC-DME: Timing not authorized for defining the MAPt.

GS	kt	80	100	120	140	160	180
OM - THR (3.8 NM)	MIN:SEC	2:51	2:17	1:54	1:38	1:26	1:16
Rate of descent (5.2%)	ft/MIN	420	530	640	740	850	960

Valid for flight simulation use only - do not use for real life navigation

CHANGES: Runway designator

EDDB/SXF SCHONEFELD

APP CHART NO.3
Revision 08 JUN 08
Effective 03 JUL 08

BERLIN, GERMANY NDB Rwy 07

Radar: Bremen Radar 123.220
Arrival: Bremen Radar 119.700
Director: Berlin Director 121.120

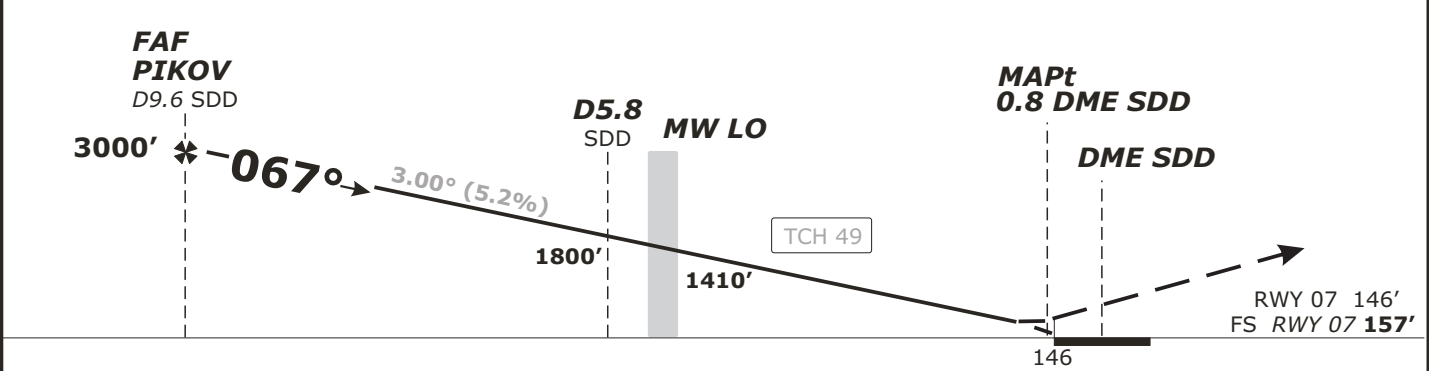
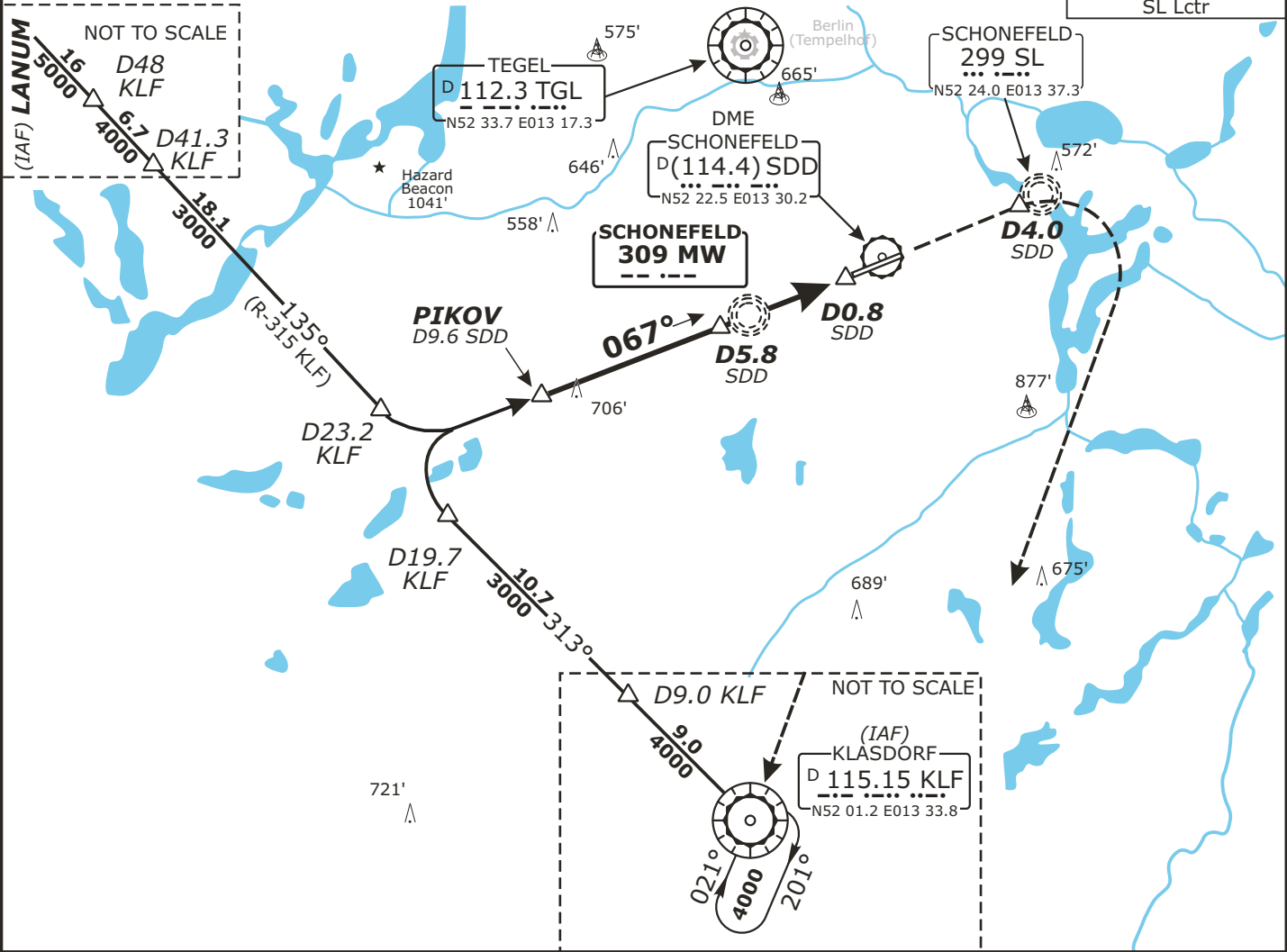
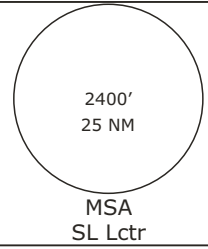
Tower: 120.02
Ground: 121.60

ATIS: 124.95

MISSED APCH: On runway track, climb to 3000 max., at 4.0 DME East of SDD continue climb to 4000 and RT to KLF DVOR

Alt Set: hPa (IN on req) Rwy Elev: 5 hPa Trans level: By ATC Trans alt: 5000'

DME REQUIRED.



OCA (OCH)	A	B	C	D
NDB-DME	600 (450)	600 (450)	600 (450)	600 (450)

DME SDD	9	8	7	6	5	4	3
DIST THR	8.2	7.2	6.2	5.2	4.2	3.2	2.2
ALTITUDE	2810	2490	2170	1860	1540	1220	900

Timing not authorized for defining the MAPt.

GS	kt	80	100	120	140	160	180
MN LO-MAPt (3.8 NM)	MIN:SEC	2:51	2:17	1:54	1:38	1:26	1:16
Rate of descent (5.2%)	ft/MIN	420	530	640	740	850	960

Valid for flight simulation use only - do not use for real life navigation

CHANGES: Runway designator

CAT IIIA & CAT IIIB (MNM RVR 125 m) Approved.

