

EDAH/HDF

HERINGSDORF, GERMANY

Radar: Bremen Radar 126.170
Bremen Radar 123.220

Tower: 132.820

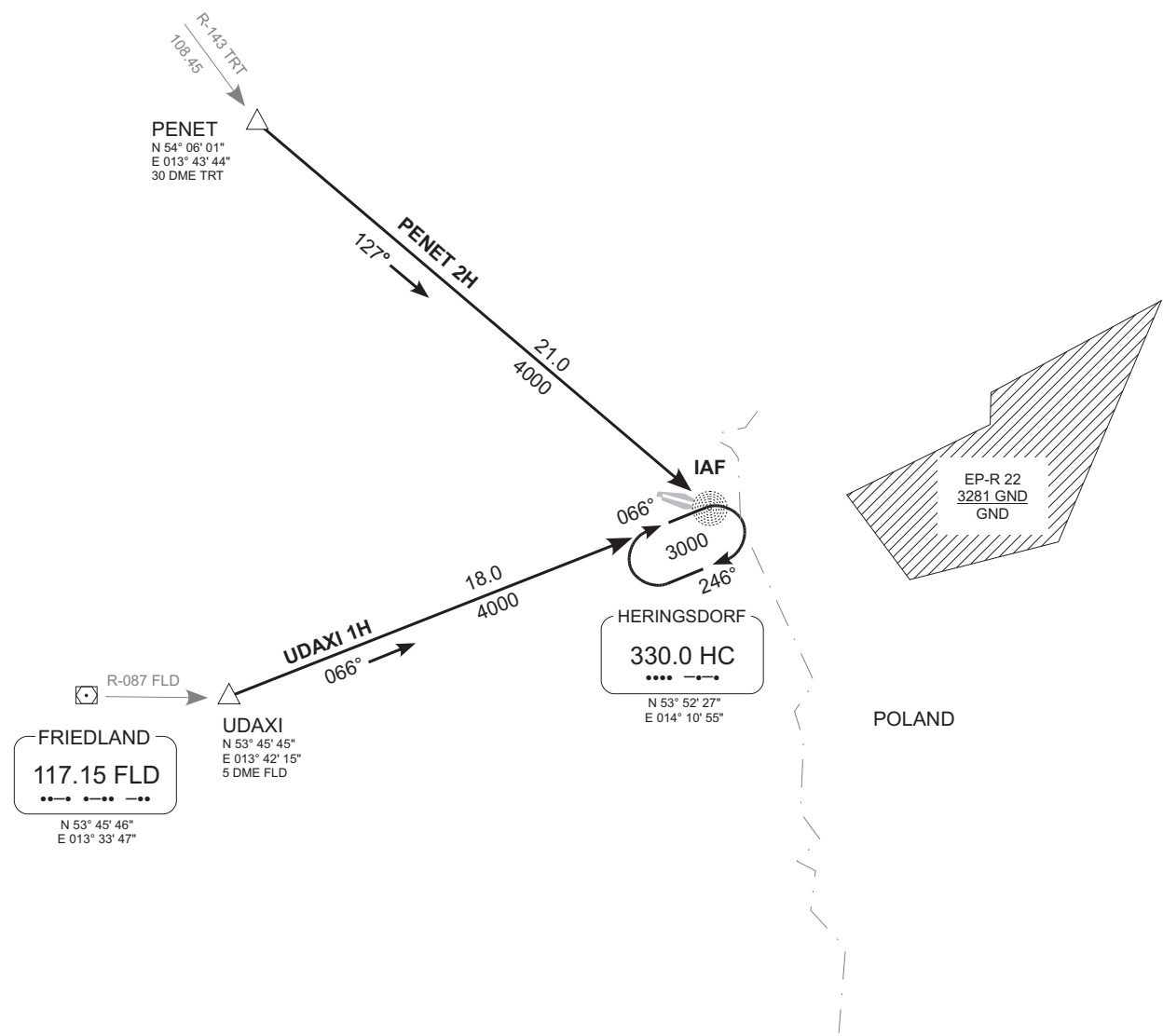
Transition level: by ATC
Transition altitude: 5000'

1800'
25 NM

MSA HC NDB
German territory
only

PENET TWO HOTEL (PENET 2H) UDAXI ONE HOTEL (UDAXI 1H) RWY 10/28 ARRIVALS

Valid for flight simulation use only - do not use for real life navigation



Bearings and tracks are magnetic
Altitudes in feet MSL

CHANGES: Communications