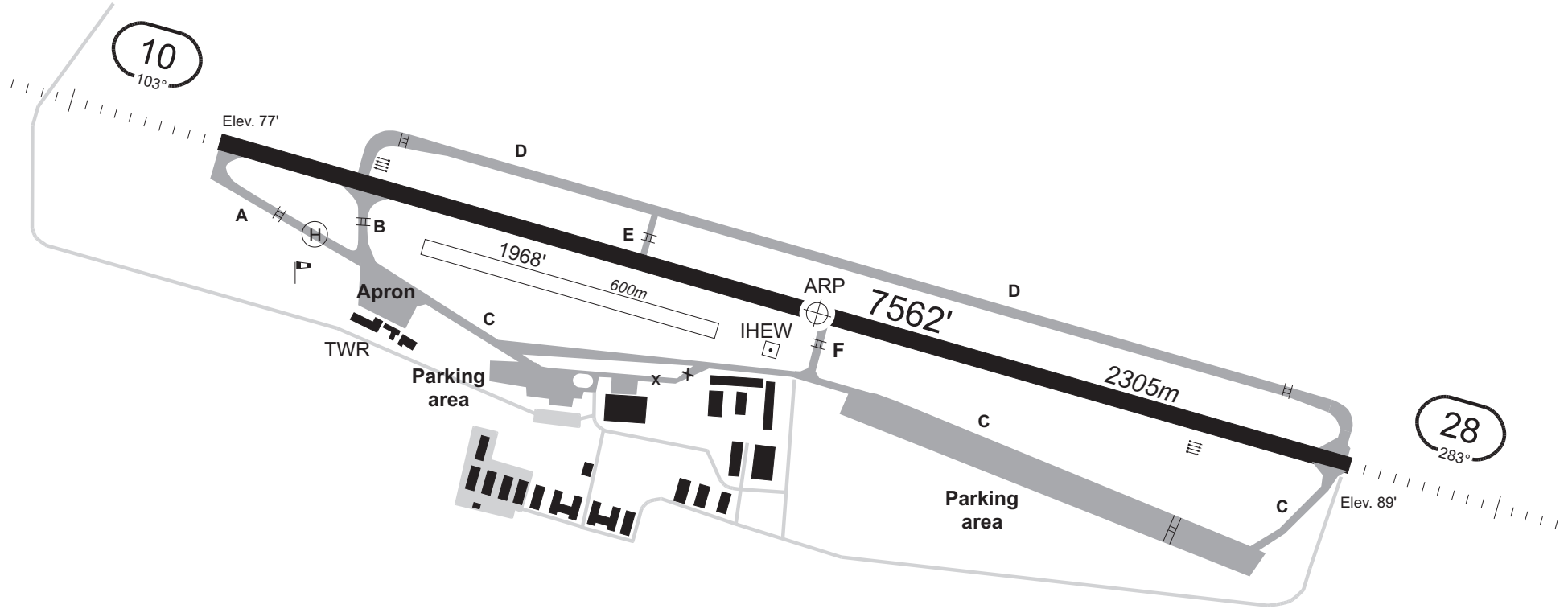


| RWY | TWY | TORA | TODA | ASDA |
|-----|-----|-------|-------|-------|
| 10 | B | 1956m | 1956m | 1956m |
| | F | 1049m | 1049m | 1049m |
| 28 | F | 1241m | 1241m | 1241m |
| | E | 872m | 872m | 872m |



CHANGES: helicopter landing

Valid for flight simulation use only - do not use for real life navigation

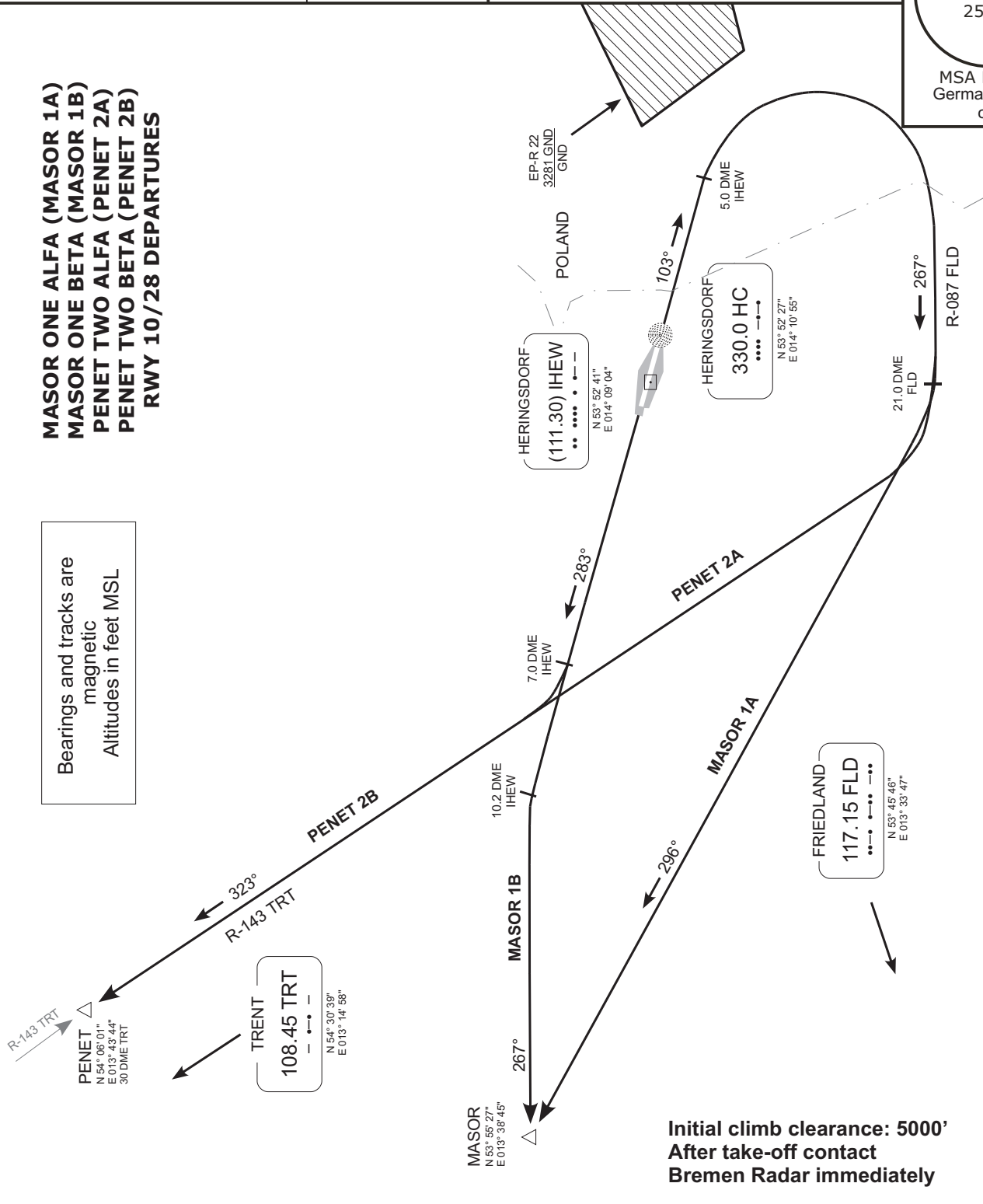
EDAH/HDF

HERINGSDORF, GERMANY

| | | | |
|---|-----------------------|---|--|
| Radar: Bremen Radar 126.170 Bremen Radar 123.220 | Tower: 132.820 | Transition level: by ATC Transition altitude: 5000' After take-off contact Bremen Radar immediately | <div style="border: 1px solid black; border-radius: 50%; width: 100px; height: 100px; display: flex; align-items: center; justify-content: center;"> <div style="text-align: center;">1800' 25 NM</div> </div> <p>MSA HC NDB German territory only</p> |
|---|-----------------------|---|--|

**MASOR ONE ALFA (MASOR 1A)
MASOR ONE BETA (MASOR 1B)
PENET TWO ALFA (PENET 2A)
PENET TWO BETA (PENET 2B)
RWY 10/28 DEPARTURES**

Bearings and tracks are
magnetic
Altitudes in feet MSL



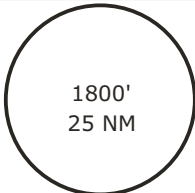
| SID | RWY | ROUTING | REMARKS |
|----------|-----|--|--|
| MASOR 1A | 10 | On track 103° via HC NDB to 5.0 DME IHEW; RT to intercept R-087 FLD; on R-087 FLD to 21.0 DME FLD; RT, on track 296° to MASOR. | After passing 10.2 DME IHEW BRNAV equipment necessary. |
| MASOR 1B | 28 | On track 283° HC NDB to 10.2 DME IHEW; LT, on track 267° to MASOR. | After passing 21.0 DME FLD BRNAV equipment necessary. |
| PENET 2A | 10 | On track 103° via HC NDB to 5.0 DME IHEW; RT to intercept R-087 FLD; on R-087 FLD to 21.0 DME FLD; RT, on R-143 TRT to PENET. | |
| PENET 2B | 28 | On track 283° HC NDB to 7.0 DME IHEW; RT, on R-143 TRT to PENET. | |

Valid for flight simulation use only - do not use for real life navigation

EDAH/HDF

HERINGSDORF, GERMANY

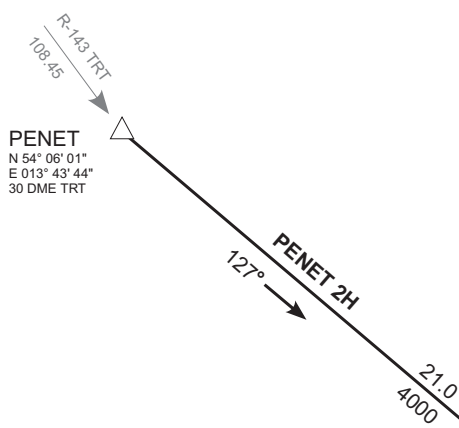
| | | |
|--|-----------------------|--|
| Radar: Bremen Radar 126.170 Bremen Radar 123.220 | Tower: 132.820 | Transition level: by ATC Transition altitude: 5000' |
|--|-----------------------|--|



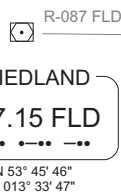
MSA HC NDB
German territory
only

PENET TWO HOTEL (PENET 2H) UDAXI ONE HOTEL (UDAXI 1H) RWY 10/28 ARRIVALS

Valid for flight simulation use only - do not use for real life navigation

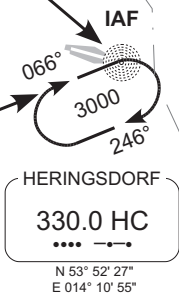


PENET
N 54° 06' 01"
E 013° 43' 44"
30 DME TRT

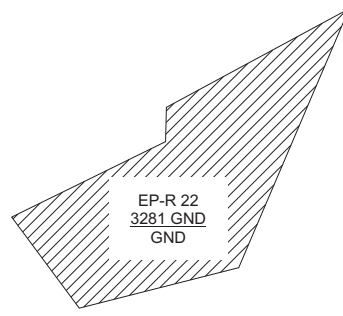


FRIEDLAND
117.15 FLD
N 53° 45' 46"
E 013° 33' 47"

UDAXI
N 53° 45' 45"
E 013° 42' 15"
5 DME FLD



HERINGSDORF
330.0 HC
N 53° 52' 27"
E 014° 10' 55"



POLAND

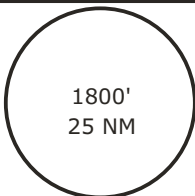
Bearings and tracks are magnetic
Altitudes in feet MSL

EDAH/HDF

Radar: Bremen Radar 126.170
Bremen Radar 123.220

Tower: 132.820

Transition level: by ATC
Transition altitude: 5000'
Apt. elev. 93'
THR Elev. 89'

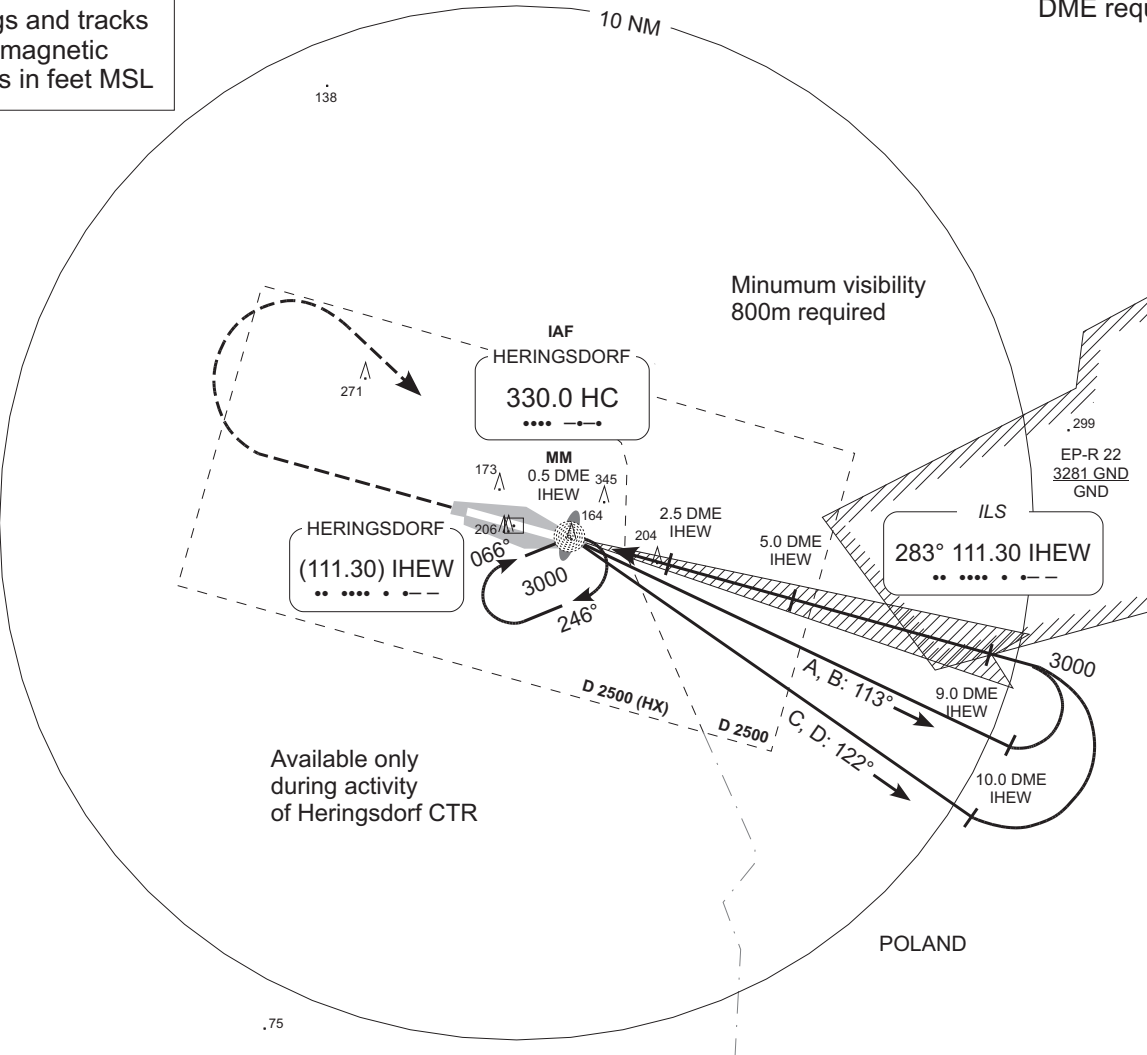


MSA HC NDB
German territory
only

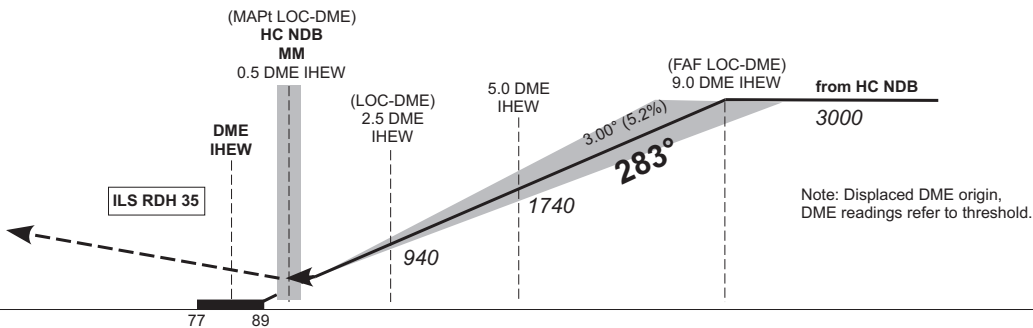
DME required

MISSED APCH: Climb straight ahead to 1500'
RT to HC NDB climbing to 3000'.

Bearings and tracks
are magnetic
Altitudes in feet MSL



Valid for flight simulation use only - do not use for real life navigation



Note: Displaced DME origin,
DME readings refer to threshold.

| | | | | |
|-----------|--------------|--------------|--------------|--------------|
| OCA (OCH) | A | B | C | D |
| ILS CAT I | 296 (207) | 306 (217) | 316 (227) | 326 (237) |
| LOC-DME | 450 (370) | | | |
| CIRCLING* | 640 | 740 | 790 | |

* South of aerodrome only.

| | | | | | | | | |
|----------|-----|-----|------|------|------|------|------|------|
| DME IHEW | 1 | 2 | 3 | 4 | 5 | 6 | 7 | 8 |
| DIST THR | 1 | 2 | 3 | 4 | 5 | 6 | 7 | 8 |
| ALTITUDE | 460 | 780 | 1100 | 1420 | 1740 | 2060 | 2380 | 2690 |

LOC-DME: Timing not authorized for defining the MAPt.

| | | | | | | | |
|-----------------------------|---------|------|------|------|------|------|------|
| GS | kt | 80 | 100 | 120 | 140 | 160 | 180 |
| 5.0 DME IHEW - THR (5.0 NM) | MIN:SEC | 3:45 | 3:00 | 2:30 | 2:09 | 1:53 | 1:40 |

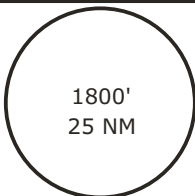
CHANGES: Communications

EDAH/HDF

Radar: **Bremen Radar 126.170**
Bremen Radar 123.220

Tower: **132.820**

Transition level: by ATC
Transition altitude: 5000'
Apt. elev. 93'
THR Elev. 77'

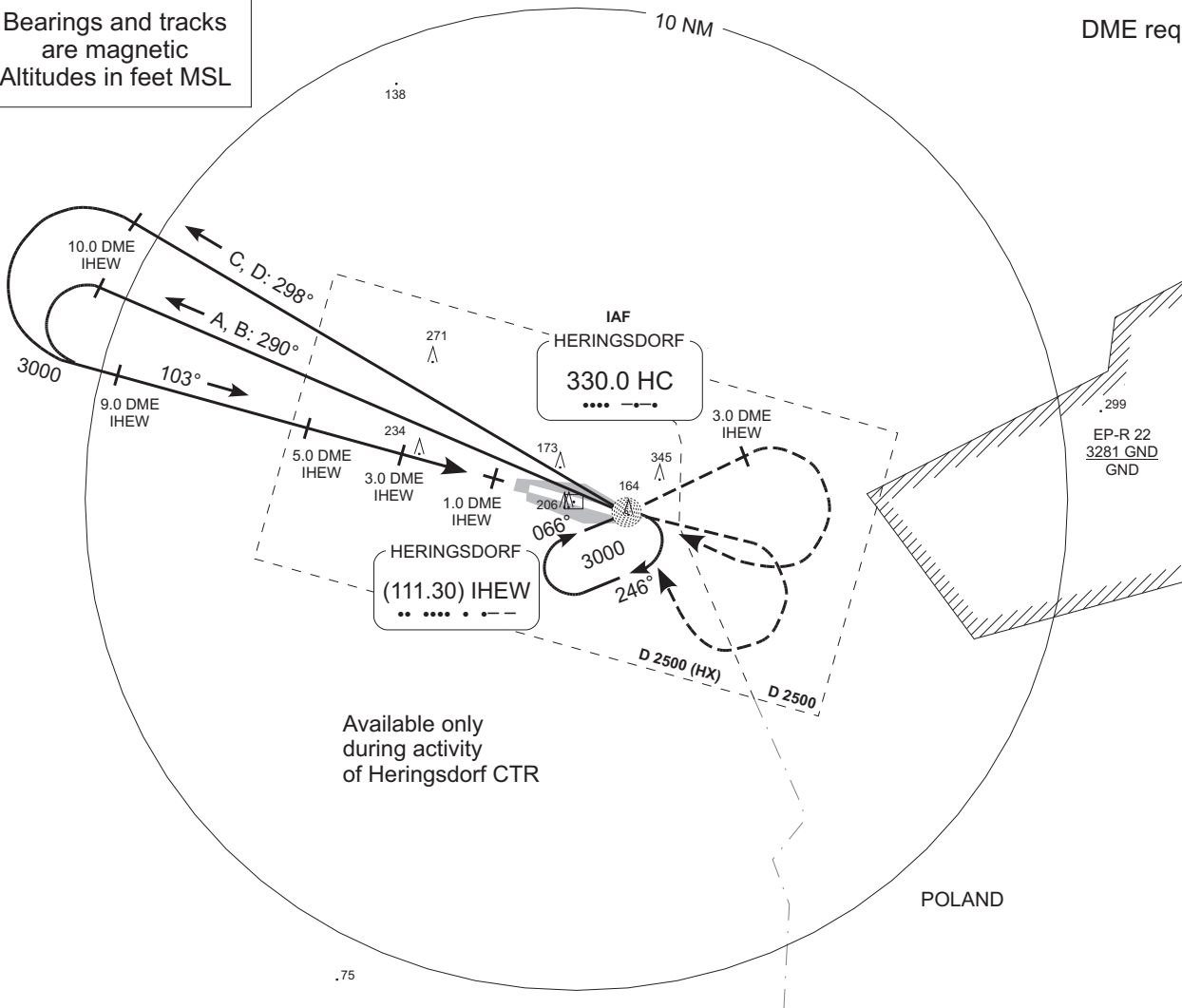


MISSED APCH: Climb straight ahead to 1500'
RT to HC NDB climbing to 3000'.

MSA HC NDB
German territory
only

DME required

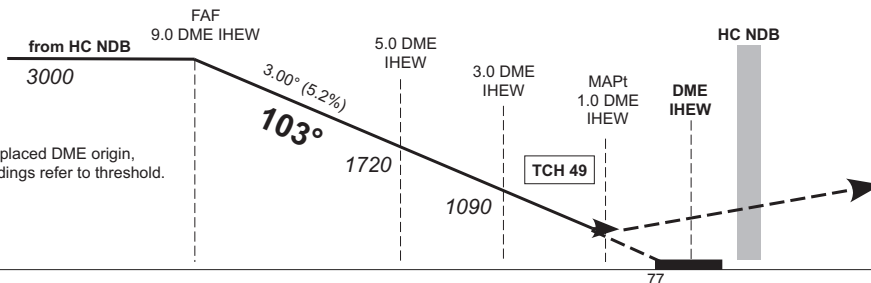
Bearings and tracks
are magnetic
Altitudes in feet MSL



Available only
during activity
of Heringsdorf CTR

POLAND

Valid for flight simulation use only - do not use for real life navigation



Note: Displaced DME origin,
DME readings refer to threshold.

| | | | | |
|-----------|-----------|---|---|---|
| OCA (OCH) | A | B | C | D |
| NDB-DME | 480 (410) | | | |

| | | | | | | | | |
|----------|------|------|------|------|------|------|------|-----|
| DME IHEW | 9 | 8 | 7 | 6 | 5 | 4 | 3 | 2 |
| DIST THR | 9 | 8 | 7 | 6 | 5 | 4 | 3 | 2 |
| ALTITUDE | 3000 | 2680 | 2360 | 2040 | 1720 | 1400 | 1090 | 770 |

Timing not authorized for defining the MAPt.

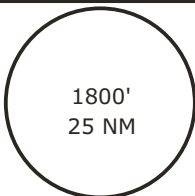
| | | | | | | | |
|--------------------------------------|---------|------|------|------|------|------|------|
| GS | kt | 80 | 100 | 120 | 140 | 160 | 180 |
| 5.0 DME IHEW - 1.0 DME IHEW (4.0 NM) | MIN:SEC | 3:00 | 2:24 | 2:00 | 1:43 | 1:30 | 1:20 |

EDAH/HDF

Radar: Bremen Radar 126.170
Bremen Radar 123.220

Tower: 132.820

Transition level: by ATC
Transition altitude: 5000'
Apt. elev. 93'
THR Elev. 89'

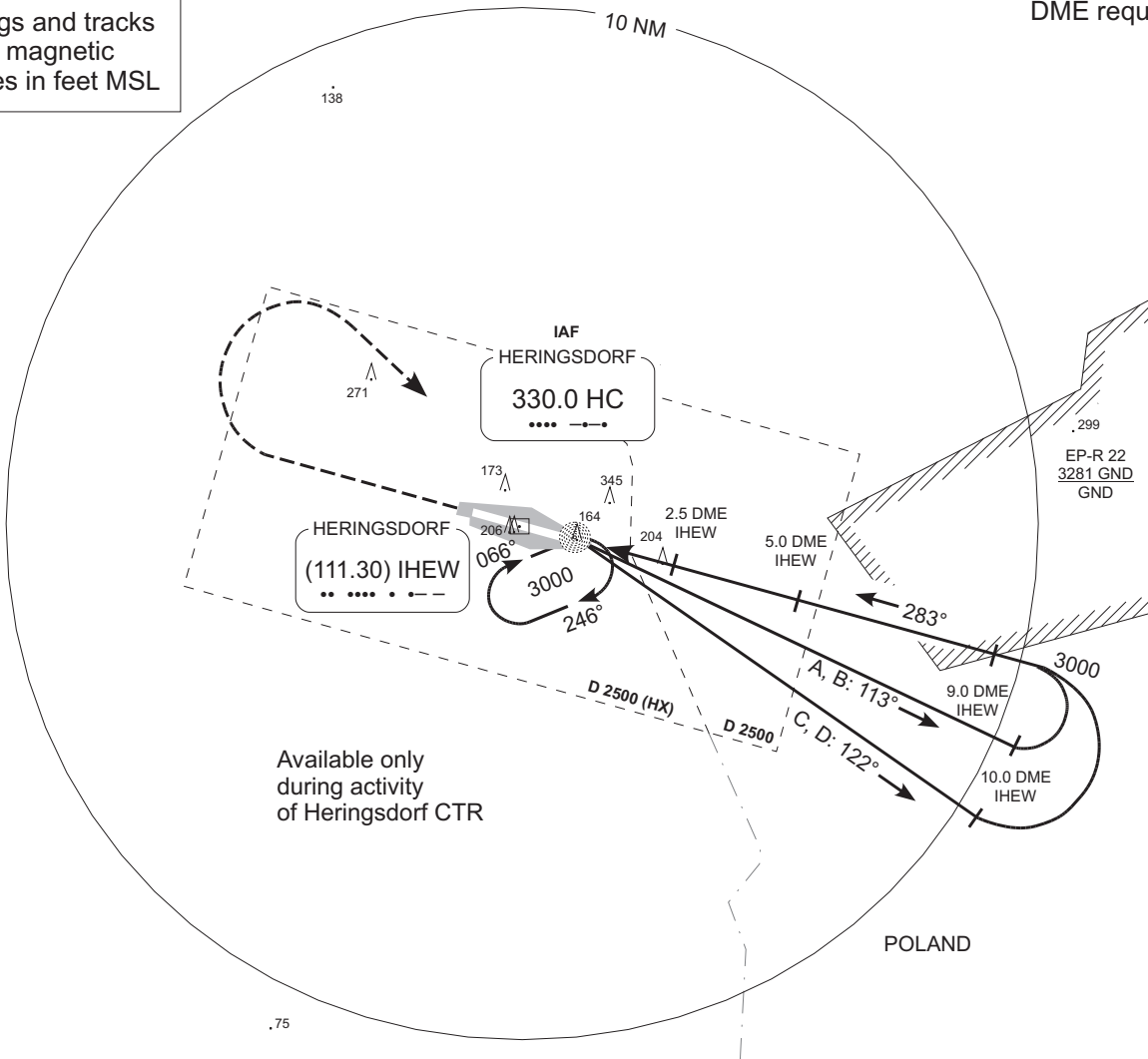


MSA HC NDB
German territory
only

DME required

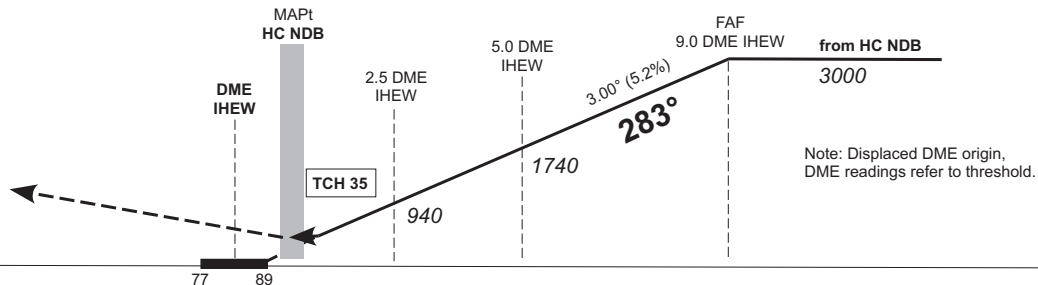
**MISSED APCH: Climb straight ahead to 1500'
RT to HC NDB climbing to 3000'.**

Bearings and tracks
are magnetic
Altitudes in feet MSL



Available only
during activity
of Heringsdorf CTR

POLAND



Note: Displaced DME origin,
DME readings refer to threshold.

| | | | | |
|-----------|-----------|-----|-----|---|
| OCA (OCH) | A | B | C | D |
| NDB-DME | 510 (420) | | | |
| CIRCLING* | 640 | 740 | 790 | |

* South of aerodrome only.

| | | | | | | | |
|----------|-----|------|------|------|------|------|------|
| DME IHEW | 2 | 3 | 4 | 5 | 6 | 7 | 8 |
| DIST THR | 2 | 3 | 4 | 5 | 6 | 7 | 8 |
| ALTITUDE | 780 | 1100 | 1420 | 1740 | 2060 | 2380 | 2690 |

Timing not authorized for defining the MAPt.

| | | | | | | | |
|--------------------------------|---------|------|------|------|------|------|------|
| GS | kt | 80 | 100 | 120 | 140 | 160 | 180 |
| 5.0 DME IHEW – HC NDB (4.5 NM) | MIN:SEC | 3:23 | 2:42 | 2:15 | 1:56 | 1:41 | 1:30 |

Valid for flight simulation use only - do not use for real life navigation

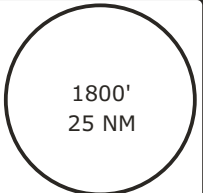
EDAH/HDF

HERINGSDORF, GERMANY

Info: Bremen Info 126.350
 Radar: Bremen Radar 126.170
 Bremen Radar 123.220

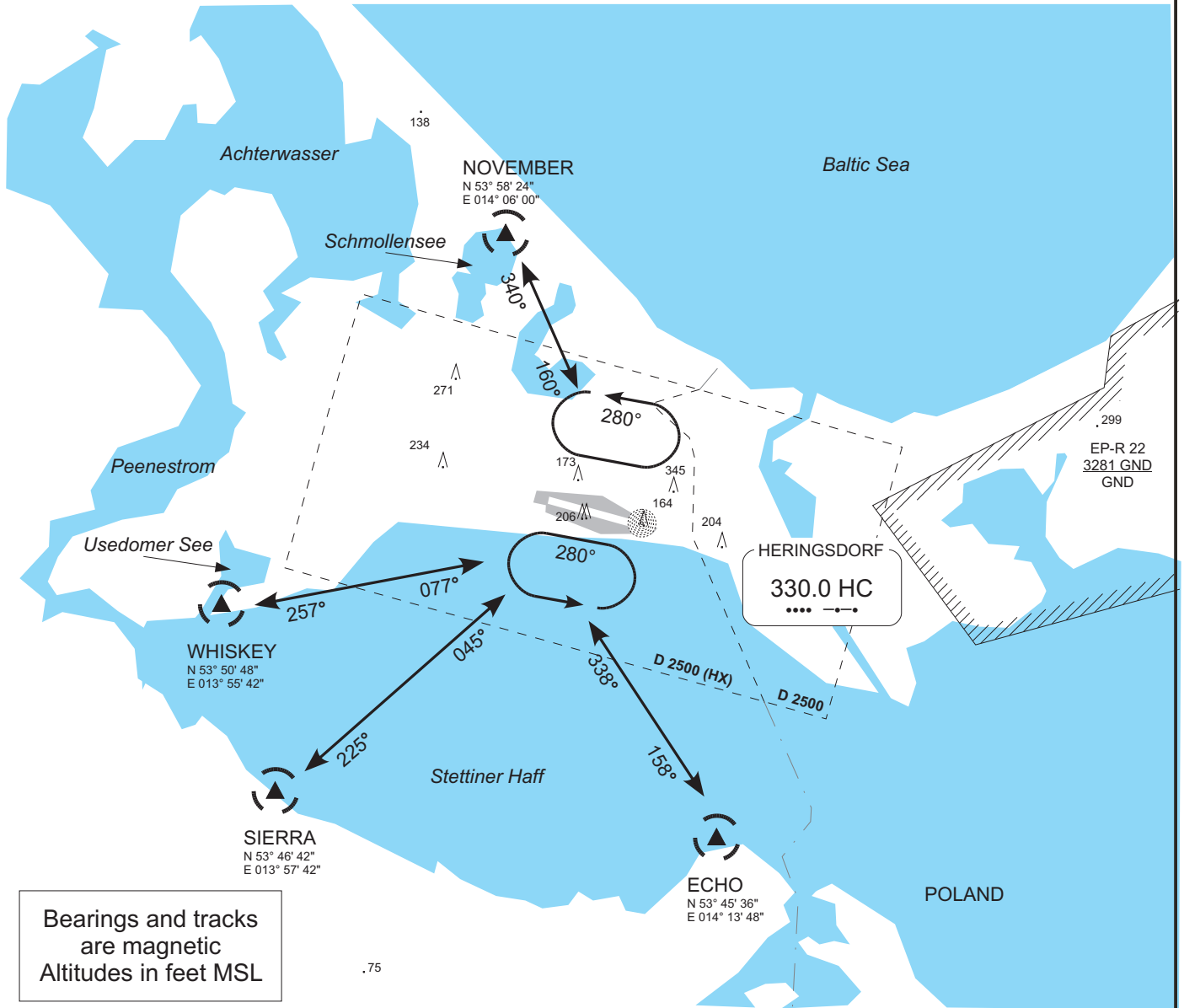
Tower: 132.820

Transition level: by ATC
 Transition altitude: 5000'
 Airport elevation: 93'



MSA HC NDB
 German territory
 only

Valid for flight simulation use only - do not use for real life navigation



Bearings and tracks
 are magnetic
 Altitudes in feet MSL