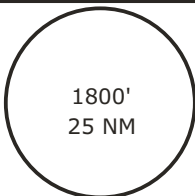


EDAH/HDF

Radar: Bremen Radar 126.170
Bremen Radar 123.220

Tower: 132.820

Transition level: by ATC
Transition altitude: 5000'
Apt. elev. 93'
THR Elev. 89'

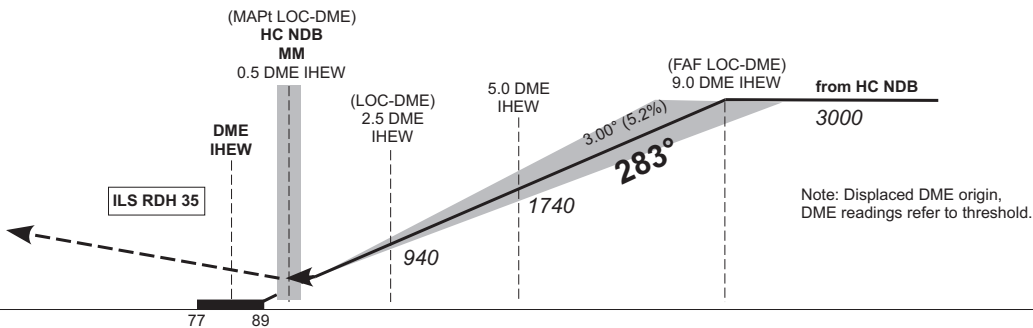
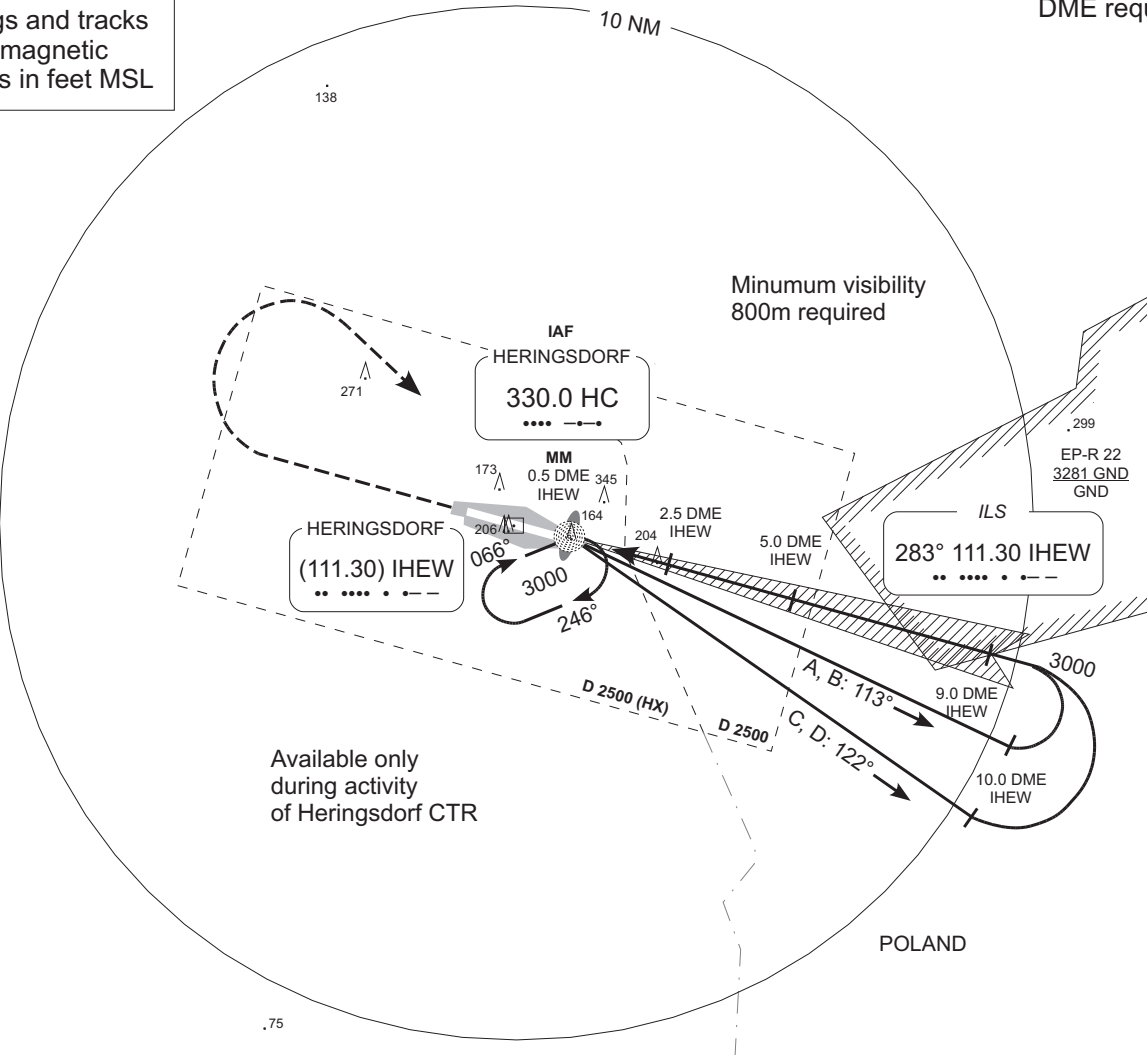


MSA HC NDB
German territory
only

DME required

**MISSED APCH: Climb straight ahead to 1500'
RT to HC NDB climbing to 3000'.**

Bearings and tracks
are magnetic
Altitudes in feet MSL



Note: Displaced DME origin,
DME readings refer to threshold.

OCA (OCH)	A	B	C	D
ILS CAT I	296 (207)	306 (217)	316 (227)	326 (237)
LOC-DME	450 (370)			
CIRCLING*	640	740	790	

* South of aerodrome only.

DME IHEW	1	2	3	4	5	6	7	8
DIST THR	1	2	3	4	5	6	7	8
ALTITUDE	460	780	1100	1420	1740	2060	2380	2690

LOC-DME: Timing not authorized for defining the MAPt.

GS	kt	80	100	120	140	160	180
5.0 DME IHEW - THR (5.0 NM)	MIN:SEC	3:45	3:00	2:30	2:09	1:53	1:40

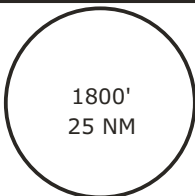
Valid for flight simulation use only - do not use for real life navigation

EDAH/HDF

Radar: Bremen Radar 126.170
Bremen Radar 123.220

Tower: 132.820

Transition level: by ATC
Transition altitude: 5000'
Apt. elev. 93'
THR Elev. 77'

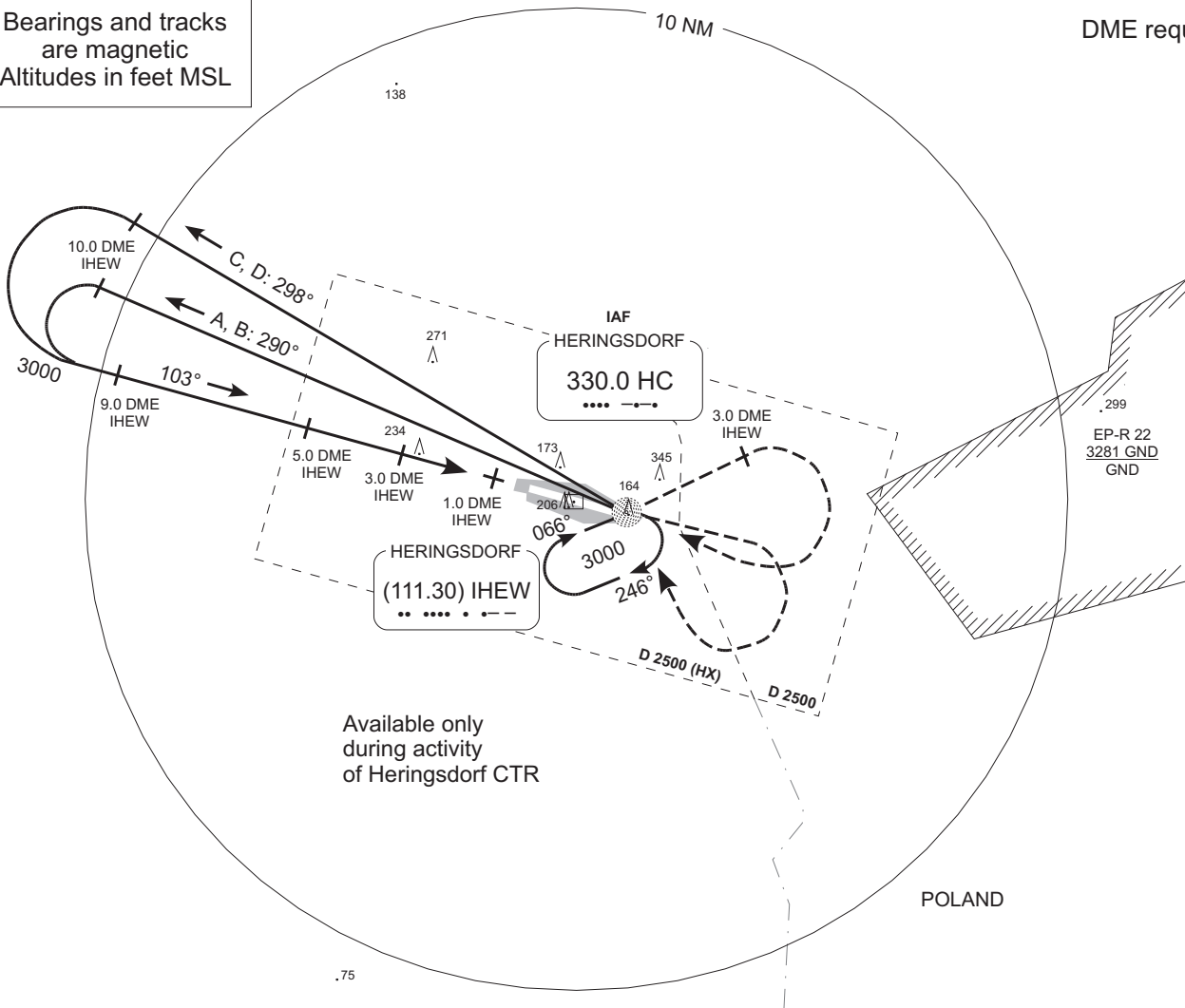


MSA HC NDB
German territory
only

DME required

**MISSED APCH: Climb straight ahead to 1500'
RT to HC NDB climbing to 3000'.**

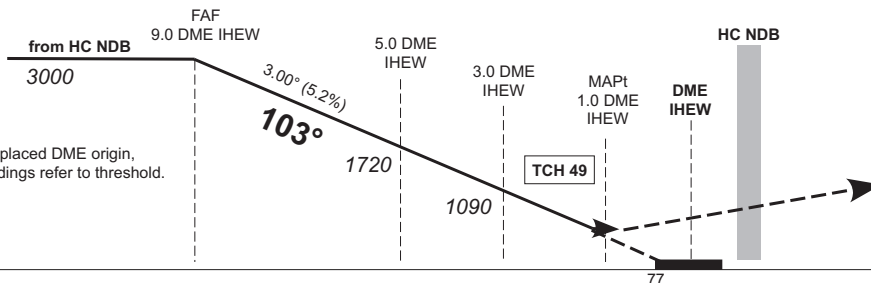
Bearings and tracks
are magnetic
Altitudes in feet MSL



Available only
during activity
of Heringsdorf CTR

POLAND

Valid for flight simulation use only - do not use for real life navigation



Note: Displaced DME origin,
DME readings refer to threshold.

OCA (OCH)	A	B	C	D
NDB-DME	480 (410)			

DME IHEW	9	8	7	6	5	4	3	2
DIST THR	9	8	7	6	5	4	3	2
ALTITUDE	3000	2680	2360	2040	1720	1400	1090	770

Timing not authorized for defining the MAPt.

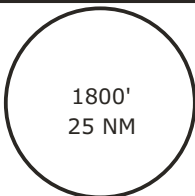
GS	kt	80	100	120	140	160	180
5.0 DME IHEW - 1.0 DME IHEW (4.0 NM)	MIN:SEC	3:00	2:24	2:00	1:43	1:30	1:20

EDAH/HDF

Radar: Bremen Radar 126.170
Bremen Radar 123.220

Tower: 132.820

Transition level: by ATC
Transition altitude: 5000'
Apt. elev. 93'
THR Elev. 89'

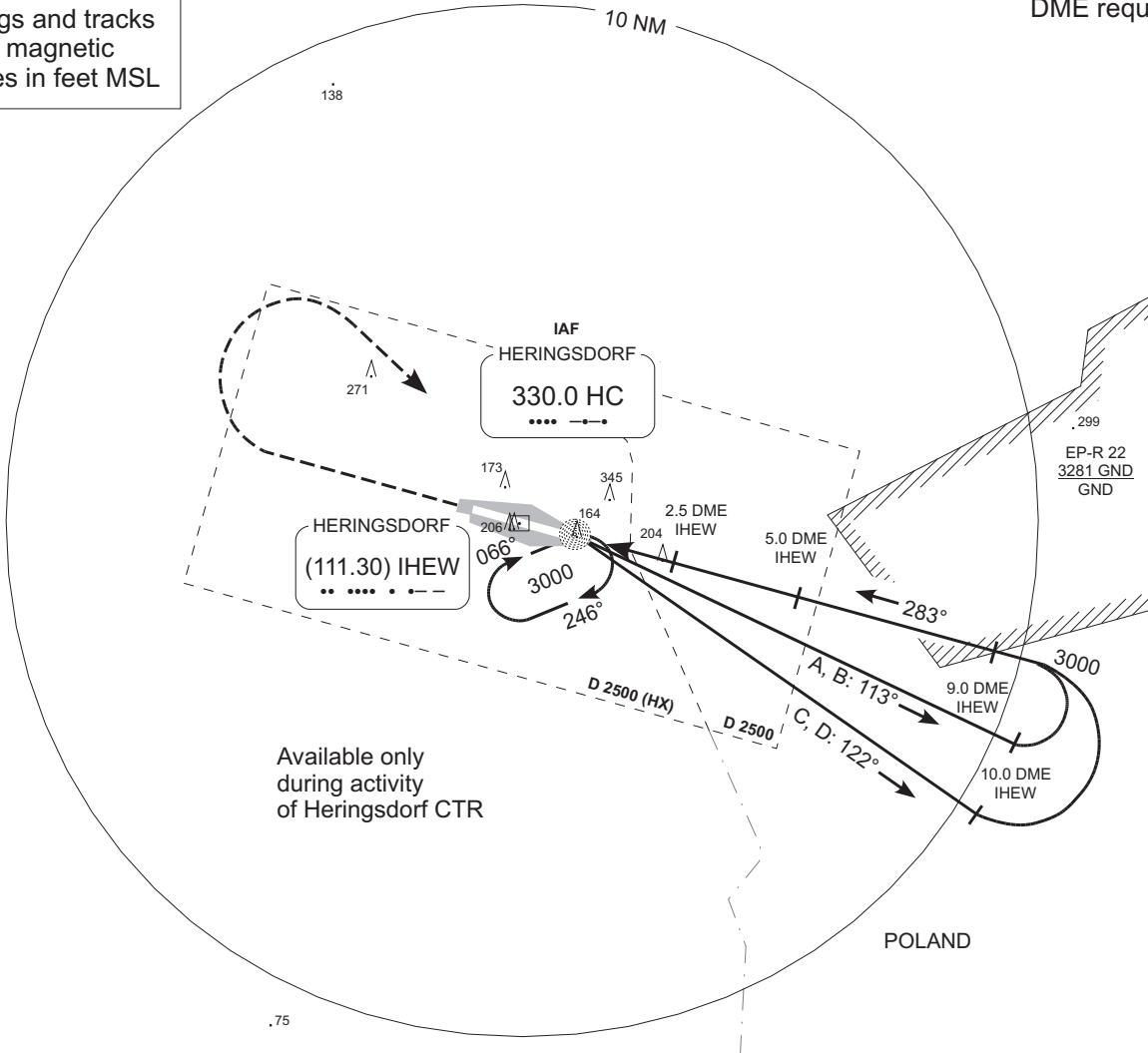


MSA HC NDB
German territory
only

DME required

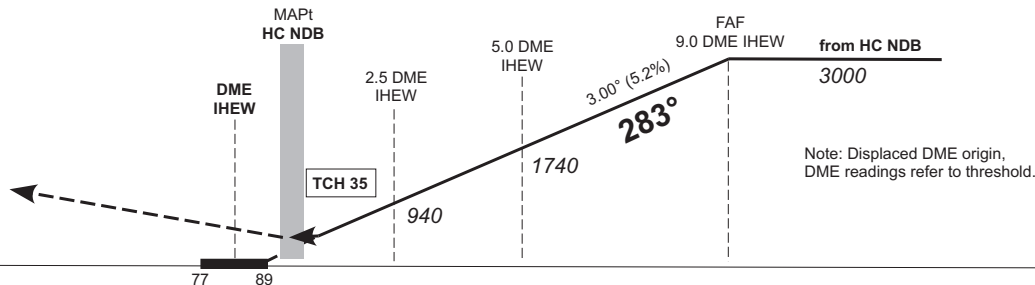
**MISSED APCH: Climb straight ahead to 1500'
RT to HC NDB climbing to 3000'.**

Bearings and tracks
are magnetic
Altitudes in feet MSL



Available only
during activity
of Heringsdorf CTR

POLAND



Note: Displaced DME origin,
DME readings refer to threshold.

OCA (OCH)	A	B	C	D
NDB-DME	510 (420)			
CIRCLING*	640	740	790	

* South of aerodrome only.

DME IHEW	2	3	4	5	6	7	8
DIST THR	2	3	4	5	6	7	8
ALTITUDE	780	1100	1420	1740	2060	2380	2690

Timing not authorized for defining the MAPt.

GS	kt	80	100	120	140	160	180
5.0 DME IHEW – HC NDB (4.5 NM)	MIN:SEC	3:23	2:42	2:15	1:56	1:41	1:30

Valid for flight simulation use only - do not use for real life navigation